

Traffic Safety is a Public Health Issue: Collaborating to Save Lives

June 24, 2021

10:00 – 11:30 a.m.

www.scag.ca.gov



Presentations



Presentation #1: Overview of Regional Conditions, *Go Human* Campaign

Amy Zhou, SCAG

Presentation #2: The New Normal Resolution: Confronting Systemic Racism and Inequities through Prevention

Miguel A. Vazquez, AICP, Healthy Communities Urban Regional Planner, Riverside University Health System

Presentation #3: Vision Zero in Los Angeles County: Cross Sector Collaboration to Save Lives

Alexis Lantz, Senior Policy Strategist, Los Angeles County Department of Public Health

Presentation #4: Significance of Partnerships

Dr. Susie López-Guerra, Director of Community Relations, Santa Ana Unified School District

Overview of Regional Conditions & *Go Human* Campaign

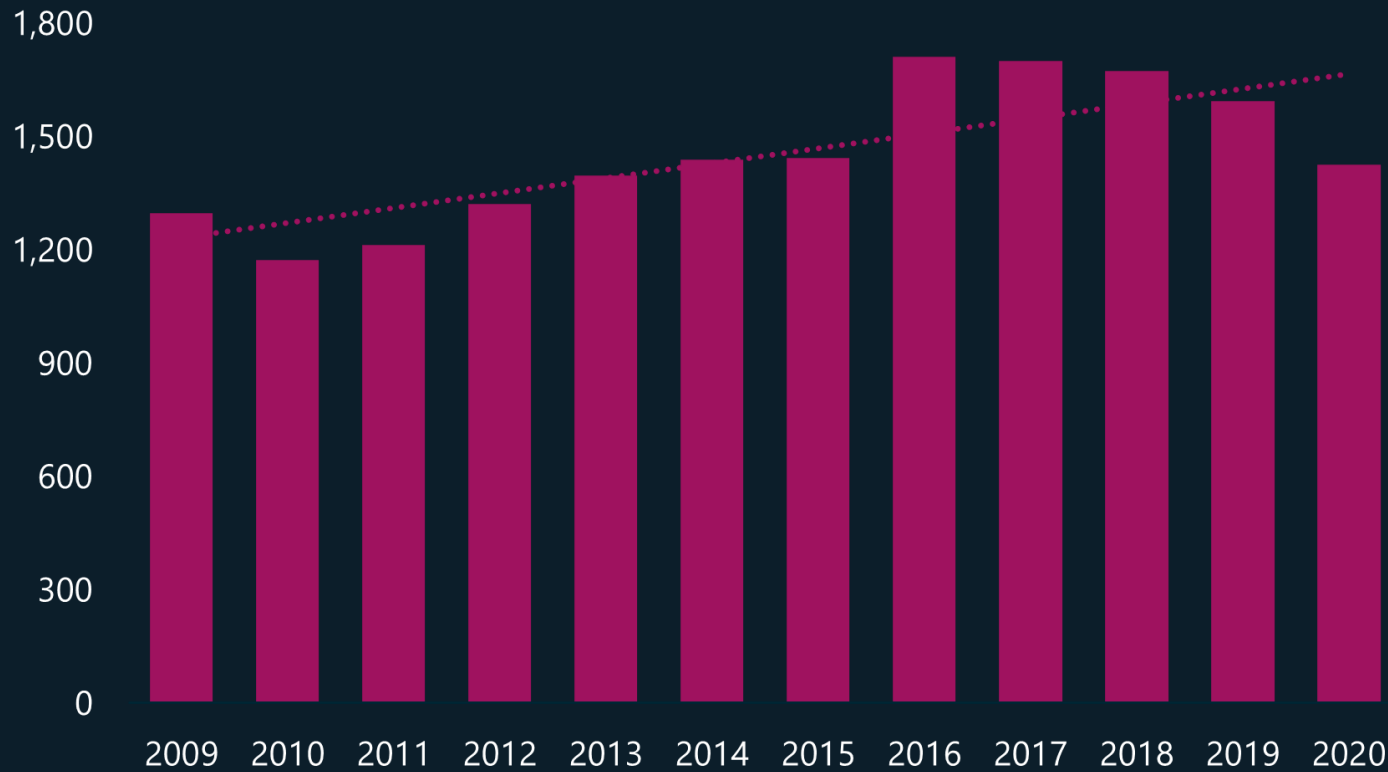
Summer 2021

www.scag.ca.gov



What are the overall trends?

SCAG Region Total Number of Fatal Victims



1,450
PEOPLE DIE EVERY YEAR
FROM COLLISIONS

5,500
PEOPLE SUSTAIN SERIOUS
INJURIES EVERY YEAR
FROM COLLISIONS

77%
OF ALL COLLISIONS
OCCUR IN
URBAN AREAS

Why are collisions occurring?

One of the top contributing factors of all collisions is unsafe speed.

Speed is the critical factor in the severity of collisions.

HIT BY A VEHICLE TRAVELING AT 25 MPH
89% chance of survival.

HIT BY A VEHICLE TRAVELING AT 35 MPH
68% chance of survival.

HIT BY A VEHICLE TRAVELING AT 40 MPH
35% chance of survival.

Arriving Home Safe

The State of Transportation Safety in the Southern California Region

Southern California Association of Governments | June 8, 2021

Visit scag.ca.gov/transportation-safety for all county-specific factsheets, a Story Map, the Transportation Safety Regional Existing Conditions Report, and more.



Go Human Active Transportation Safety & Encouragement Campaign



Co-Branding & Regional Advertising Campaign



Temporary Safety Demonstrations & Programming (Kit of Parts)



Safety Workshops, Webinars, and Technical Assistance



SCAG's *Go Human* Traffic Safety Peer Exchanges



Traffic Safety Peer Exchanges Events



Wednesday June 9, 1 – 2:30 p.m.

Using Data to Craft a Safety Narrative: High Injury Networks

Wednesday June 16, 1 – 2:30 p.m.

Making Traffic Safety a Reality: Funding Strategies

Tuesday June 22, 1 – 2:30 p.m.

More than a Checkbox: Better Community Engagement

Thursday June 24, 10 a.m. - noon

Traffic Safety is a Public Health Issue: Collaborating to Save Lives

Tuesday June 29, 1 – 2:30 p.m.

Repairing & Investing: Addressing Equity in the Built Environment



Visit gohumansocal.org to register and sign up for the *Go Human* newsletter

Follow *Go Human* on socials @GoHumanSoCal

**The New Normal Resolution: Confronting Systemic
Racism and Inequities through Prevention**

***Miguel A. Vazquez, AICP, Healthy Communities Urban
Regional Planner, Riverside University Health System***

SCAG Peer Exchange: Traffic Safety is a Public Health Issue

The New Normal Resolution: Confronting Systemic Racism and Inequities through Prevention

Miguel Angel Vazquez, AICP

Healthy Communities
Urban and Regional Planner

Mission Statement

The Riverside County Injury Prevention Services develops and implements strategies that will reduce the severity of injuries, disability and death due to unintentional injuries to residents in Riverside County.



Active Transportation (ATP)

Funded through CalTrans – Active Transportation Program (ATP), the Safe Routes for All program provides pedestrian and bicycle safety education, encouragement, engineering, engagement, and evaluation activities that target;

- Pre-K to High School students
- College students
- Community at-large

Goals:

- increase the proportion of students and families walking and biking to schools and area parks
- increase physical activity and promote healthier lifestyles
- increase park usage
- build stronger communities
- lower rates of traffic injuries among targeted populations

Parents, principals, teachers, community leaders, as well as federal, state and local governments drive this continuous effort.

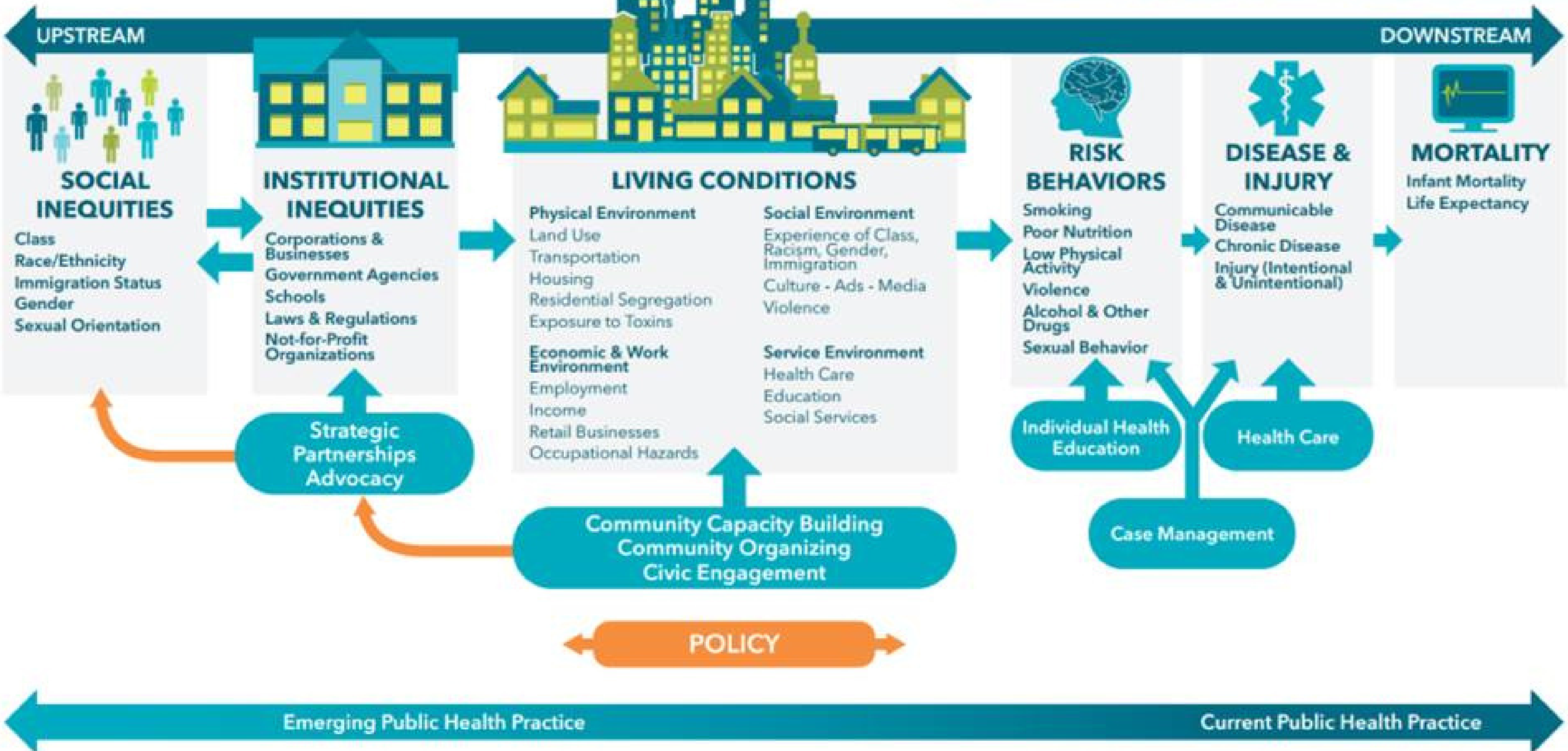


OTS Pedestrian Bike Safety

Funded by the Office of Traffic Safety, the Pedestrian and Bicycle Safety program collaborates with local school districts, law enforcement and senior centers to provide pedestrian and bicycle safety education in an effort to reduce pedestrian related injuries and fatalities in children and adults.




A PUBLIC HEALTH FRAMEWORK FOR REDUCING HEALTH INEQUITIES
BAY AREA REGIONAL HEALTH INEQUITIES INITIATIVE



Source: Bay Area Regional Health Inequalities Initiative

Graphic extracted from Portrait of Promise: The California Statewide Plan to Promote Health and Mental Health Equity

**SUBMITTAL TO THE BOARD OF SUPERVISORS
COUNTY OF RIVERSIDE, STATE OF CALIFORNIA**

331 

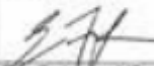
FROM: Department of Public Health, Community Health Agency **SUBMITTAL DATE:** April 6, 2011

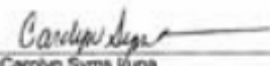
SUBJECT: Healthy Riverside County

RECOMMENDED MOTION: Move that the Board adopt the attached Resolution 2011-025 – Healthy Riverside County.

BACKGROUND: The Community Health Agency (CHA) actively works to improve the health and wellness of all Riverside County residents and visitors. Riverside County is ranked 35th out of 58 California counties in its rate of adult obesity, and ranks 52nd for its physical environment conducive to health. Our health is affected by where we live, work and play. To this end, the CHA is working closely with Transportation and Land Management Agency (TLMA)/Planning Department to develop a Community Health Element for the next General Plan update which will help ensure that future development provides for healthy eating and active living. The CHA-sponsored Riverside County Joint Health Coalition includes community partners, county departments and schools working together to find ways to reduce the rates of obesity and chronic disease in our county.

The Resolution will support these efforts by encouraging county departments to work together to support active transportation, physical activity and help to provide access to healthy and affordable foods.


 Eric Frykman, MD
Director Community Health Agency

 Carolyn Syms Luna
Planning Director

FINANCIAL DATA	Current F.Y. Total Cost:	\$ 0	In Current Year Budget:	N/A
	Current F.Y. Net County Cost:	\$ 0	Budget Adjustment:	N/A
	Annual Net County Cost:	\$ 0	For Fiscal Year:	10-11

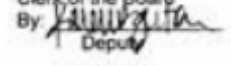
SOURCE OF FUNDS: N/A Positions To Be Deleted Per A-30
Requires 4/5 Vote

C.E.O. RECOMMENDATION: APPROVE

 Debra Cournoyer
County Executive Office Signature

MINUTES OF THE BOARD OF SUPERVISORS


On motion of Supervisor Buster, seconded by Supervisor Benoit and duly carried by unanimous vote, IT WAS ORDERED that the above matter is approved as recommended.

Ayes: Buster, Tavaglione, Stone, Benoit and Ashley Kecia Harper-Ihem
Nays: None Clerk of the Board
Absent: None By 
Date: April 26, 2011 Deputy
xc: CHA/Public Health, Planning

Prev. Agn. Ref.: District: Agenda Number: **3.12**

➤ RESOLUTION 2011-025—Healthy Riverside County

**SUBMITTAL TO THE BOARD OF SUPERVISORS
COUNTY OF RIVERSIDE, STATE OF CALIFORNIA**

331 

FROM: Department of Public Health, Community Health Agency **SUBMITTAL DATE:** April 6, 2011

SUBJECT: Healthy Riverside County

RECOMMENDED MOTION: Move that the Board adopt the attached Resolution 2011-025 – Healthy Riverside County.

12 **BE IT FURTHER RESOLVED THAT the Community Health Agency/Department of**

13 **Public Health work with other County Departments and community partners to adopt preventive measures**

14 **and develop initiatives and programs to fight obesity and chronic diseases, and create and/or work with**

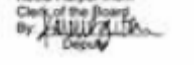
15 **existing coalitions which further community health and wellness.**

16

17

MINUTES OF THE BOARD OF SUPERVISORS

On motion of Supervisor Buster, seconded by Supervisor Benoit and duly carried by unanimous vote, IT WAS ORDERED that the above matter is approved as recommended.

Ayes: Buster, Tavaglione, Stone, Benoit and Ashley Kecia Harper-Ihem
Nays: None Clerk of the Board
Absent: None By 
Date: April 26, 2011 Deputy
xc: CHA/Public Health, Planning

Prev. Agn. Ref.: District: Agenda Number: **3.12**


RIVERSIDE COUNTY HEALTHY CITIES NETWORK

2019



	Adopted Health Element		H.E.A.L. City Resolution
	Health Element in progress		Health Resolution
	Prospect Health Element		Health Resolution in progress
	Explicit Health Considerations into the General Plan		Health Initiatives
	EJ Element (SB1000) in progress		
	Adopted EJ Element (SB1000)		

Source: County of Riverside Department of Public Health
Prepared by Miguel A. Vazquez, AICP and Salameh Wages, MPH
Summer 2015
Updated 7/1/18



45
Policy Efforts

RESOLUTION NO. 2020-179

**A RESOLUTION OF THE BOARD OF SUPERVISORS OF THE COUNTY OF RIVERSIDE
DECLARING RACISM AND INEQUITY AS A PUBLIC HEALTH CRISIS**

WHEREAS, the County is dedicated to improving health and wellness, eliminating health disparities and achieving health equity for all residents; and

WHEREAS, the County is deeply saddened by the tragic deaths of George Floyd, Breonna Taylor, Rayshard Brooks and countless Black Americans and other people of color who have been the victims of racially motivated violence; and

WHEREAS, systemic racism causes persistent racial discrimination in housing, education, employment, transportation, and criminal justice and an emerging body of research demonstrates that racism is a social determinant of health and a significant barrier to achieving health equity; and

WHEREAS, communities of color are disproportionately impacted by the negative effects of the social determinants of health, such as increased exposure to lead, poor air quality, lack of safe places to walk, bike or run, and unequal access to safe, stable housing; and

WHEREAS, living with the threat of discrimination and violence creates toxic stress for communities of color and that continued exposure to threatening situations can have lasting negative effects on health, development, well-being and opportunity; and

WHEREAS, the U.S. National Institutes of Health reports that multiple studies suggest that experiences of racism or discrimination raise the risk of emotional and physical health problems, including depression, cardiovascular disease, hypertension, and even death; and

WHEREAS, racism can manifest in different ways ranging from violent attacks to implicit bias

NOW, THEREFORE, BE IT RESOLVED by the Board of Supervisors of the County of Riverside that Riverside County, including all County departments and agencies, will:

- A) Assert that racism, with its resulting health inequities, is a public health crisis affecting our entire society; and
- B) Work to create an inclusive, well-informed governmental organization that is conscious of injustice and unfairness through robust trainings and continuing education to expand the understanding of how racial discrimination affects individuals and communities most impacted by inequities; and
- C) Actively seek to increase diversity across the County workforce and in leadership positions; and
- D) Review all policies, procedures and practices to ensure racial equity is a core element of Riverside County, and work to eliminate those policies and practices that facilitate discrimination and violence against specific populations; and
- E) Prioritize the investment of time and treasure in promoting equity to address social determinants of health; and
- F) Identify and implement solutions to eliminate systemic inequity in all external services provided by the County including, but not limited to, the following sectors: Health; Social Services; Housing; Homelessness and Workforce; Business and Community; Public Works; Land Use and Environment; Finance and Government; and Public Safety; and
- G) Enhance public education and messaging efforts to increase understanding and awareness around systemic inequity from a public health perspective, with special attention given to the experiences of communities of color; and
- H) Implement community-based alternatives to address harms and prevent trauma; and
- I) Advocate for relevant local, state, and federal policies that improve health and wellness in communities of color, and support local, state, and federal initiatives that advance racial equity, while also encouraging individual employee advocacy



SOUTHERN CALIFORNIA
ASSOCIATION OF GOVERNMENTS
900 Wilshire Blvd., Ste. 1700
Los Angeles, CA 90017
T: (213) 236-1800
www.scag.ca.gov

REGIONAL COUNCIL OFFICERS

President
Rex Richardson, Long Beach

First Vice President
Clint Lorimore, Eastvale

Second Vice President
Jan C. Harnik, Riverside County
Transportation Commission

Immediate Past President
Bill Jahn, Big Bear Lake

COMMITTEE CHAIRS

Executive/Administration
Rex Richardson, Long Beach

Community, Economic &
Human Development
Jorge Marquez, Covina

RESOLUTION NO. 20-623-2

**A RESOLUTION OF THE SOUTHERN CALIFORNIA
ASSOCIATION OF GOVERNMENTS (SCAG) STATING
CONVICTION THAT SYSTEMIC RACISM IS A HUMAN RIGHTS
AND PUBLIC HEALTH CRISIS WHICH RESULTS IN DISPARITIES IN FAMILY
STABILITY, HEALTH AND MENTAL WELLNESS, EDUCATION, EMPLOYMENT,
ENVIRONMENTAL JUSTICE, ECONOMIC DEVELOPMENT, TRANSPORTATION,
PUBLIC SAFETY, INCARCERATION AND HOUSING AND REAFFIRMING
ITS COMMITMENT TO ADVANCING JUSTICE, EQUITY, DIVERSITY AND
INCLUSION IN SOUTHERN CALIFORNIA**

WHEREAS, SCAG is the largest metropolitan planning organization (MPO) in the United States covering six counties (Imperial, Los Angeles, Orange, Riverside, San Bernardino and Ventura), and serving 19 million people pursuant to 23 USC § 134 et seq. and 49 USC § 5303 et seq. subject to the 1964 Civil Rights Act and the 1994 Presidential Executive Order No. 12898 on Environmental Justice; and

WHEREAS, SCAG is responsible for bringing Southern California's diverse residents and local partners together with unifying regional plans, policies, and programs that result in more healthy, livable, sustainable, and economically resilient communities; and

WHEREAS, SCAG acknowledges the historic role government and the planning profession have played in systemically driving and perpetuating societal inequities along racial lines that have resulted in vastly different living and social conditions and access to opportunities; and

WHEREAS, the compounding effects of the COVID-19 pandemic and resulting economic disruption have exposed the gross inequities that exist in our society; and





Miguel Angel Vazquez, AICP

Healthy Communities
Urban and Regional Planner

Contact

mvazquez@ruhealth.org
(951) 830-8101

<https://www.healthyriversidecounty.org>
<https://www.rivcoips.org/Safe-Routes-to-School>
<https://www.facebook.com/RivCoSafeRoutesToSchool>

Vision Zero in Los Angeles County: Cross Sector Collaboration to Save Lives

***Alexis Lantz, Senior Policy Strategist, Los Angeles
County Department of Public Health***



Vision Zero in Los Angeles County: Cross Sector Collaboration to Save Lives

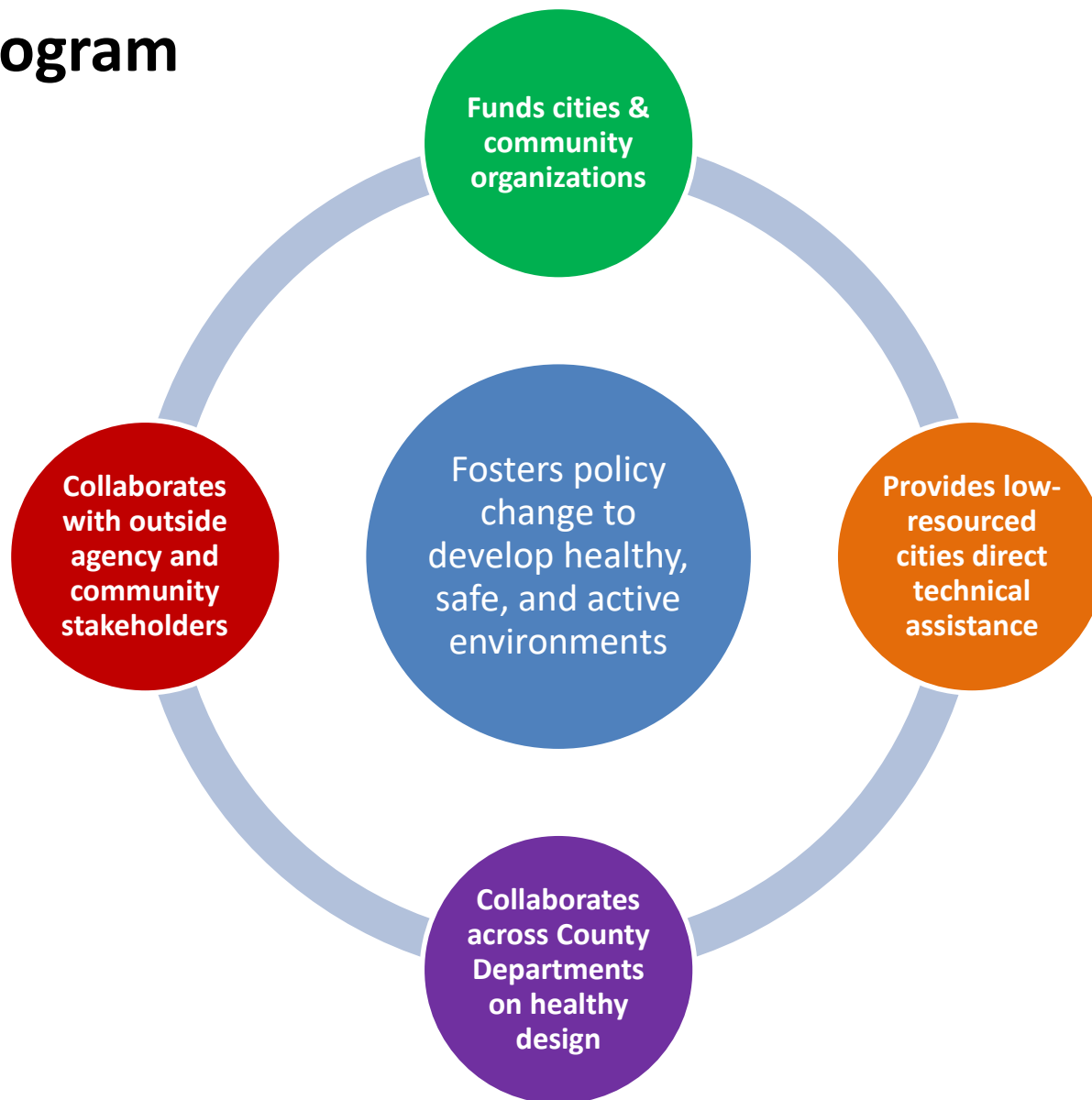
SCAG Peer Exchange – June 24th, 2021

Alexis Lantz, MA Urban Planning
Senior Policy Strategist

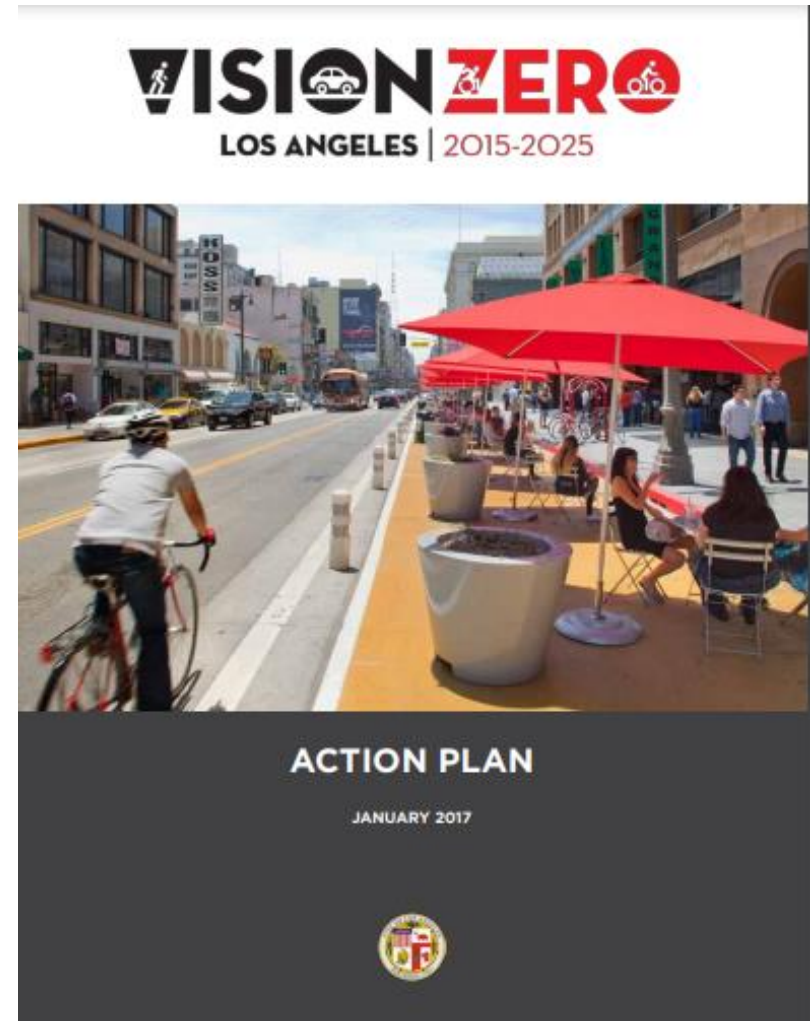




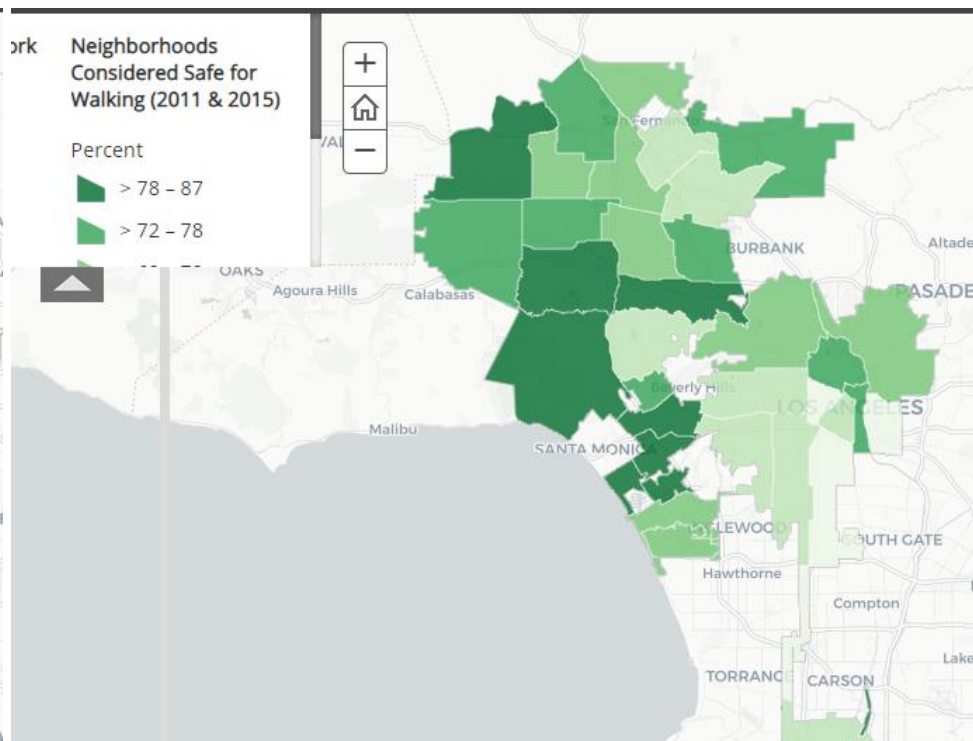
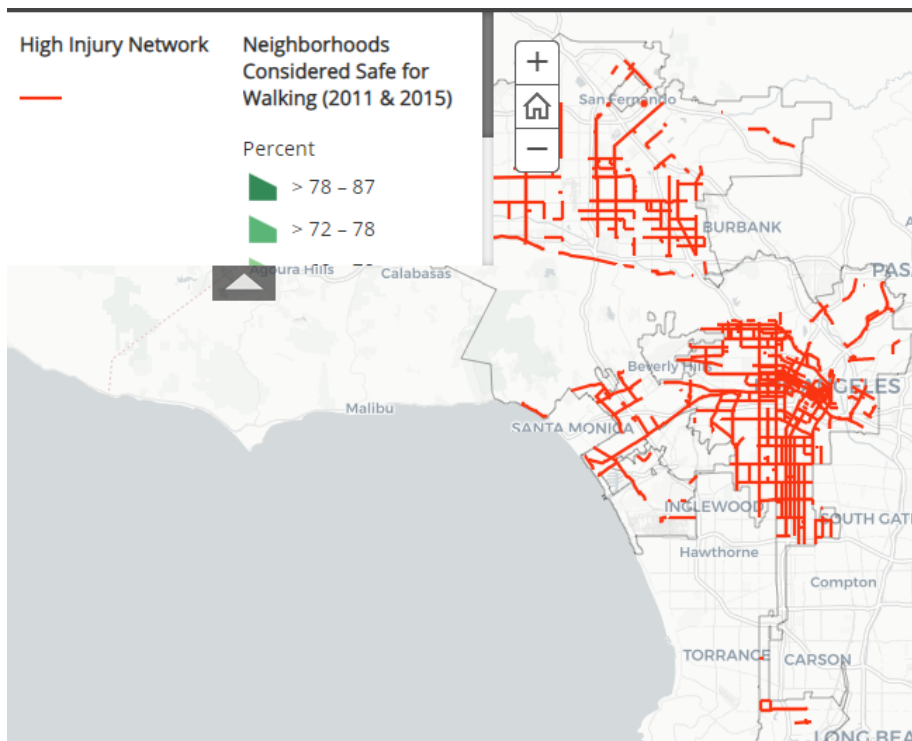
PLACE Program



Vision Zero



Data Analysis to Identify Disparities



Data Analysis to Identify Disparities

WHO ARE THE PEDESTRIAN VICTIMS OF MOTOR VEHICLE CRASHES?



60% were men



20% were under 18 years of age and **2%** in this age group died of their injuries

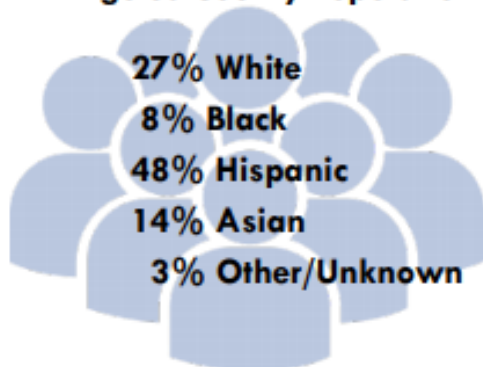


14% were 65 years or older and **14%** in this age group died of their injuries

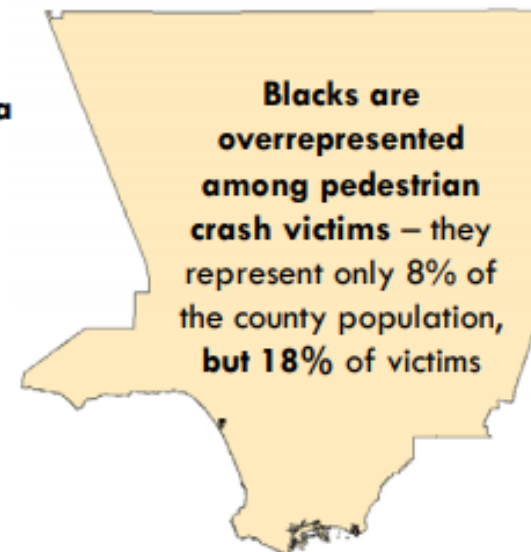
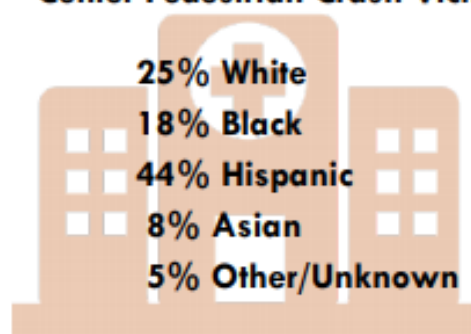


Half of the victims were hit at 20 mph or greater

Racial/Ethnic Distribution of Los Angeles County Population³



Racial/Ethnic Distribution of Trauma Center Pedestrian Crash Victims





Data Analysis to Identify Disparities

Trends 2013 – 2018:

- Overall mortality rate among PEH increased
- Traffic collisions were one of three leading causes of death
- Mortality rate for transportation-related injuries doubled
- PEH were 11 times more likely to die from transportation-related injuries than gen pop

Center for Health Impact Evaluation
Better policies for healthy communities



RECENT TRENDS IN MORTALITY RATES AND CAUSES OF DEATH AMONG PEOPLE EXPERIENCING HOMELESSNESS IN LOS ANGELES COUNTY

OCTOBER 2019

Introduction

Homelessness is a major and growing crisis in Los Angeles (LA) County and across many other regions of the country. The homelessness epidemic reflects a fundamental failure of society to meet the most basic needs of its people. Many who become homeless face conditions that greatly imperil their health. Multiple studies have documented mortality rates from three to eight times higher among those who are homeless compared to those in the general population.¹⁻⁵ In addition, persons who are homeless die at much younger ages on average than those who are housed.⁶

These sobering mortality statistics underscore the need for urgent action to move those who are homeless into stable housing and to identify effective strategies to reduce the flow of individuals and families into homelessness. In addition, information on mortality rates and causes of death among the homeless is important for planning services and prioritizing resource allocations to better meet the health needs of this extremely vulnerable and diverse population.

This policy brief presents data on recent trends in all-cause and cause-specific mortality rates among people experiencing homelessness in LA County. These rates are compared among gender and racial/ethnic sub-groups of the homeless population. Homeless mortality rates are also compared to rates in the general LA County population.

Methods

Enumerating Homeless Deaths

Calculating homeless mortality rates requires accurate estimates of the number of homeless individuals who die each year. California death certificate data do not provide a definitive indication of whether a decedent is homeless. The LA County Medical Examiner-Coroner (MEC) investigates 15-20% of deaths each year and has the option of indicating “homeless” as the residence type of the decedent, but this information is not always pertinent to the investigation and is thus not always complete. Also, while the MEC’s case investigation criteria are likely to capture most homeless deaths, an unknown number of homeless deaths each year are not investigated by the MEC.

To get as accurate and complete a count of homeless deaths as possible given these data limitations, MEC case records coded as homeless comprised an initial list that was augmented through systematic searches of MEC and death certificate data. First, for all MEC case records not coded as homeless, address fields were searched to identify records with addresses of LA County homeless shelters and interim housing facilities for the homeless⁸.

⁸Homeless shelter addresses were obtained from the Los Angeles Homeless Services Authority (LAHSA) and addresses of interim housing facilities, including stabilization housing and recuperative care facilities, were obtained from the Housing for Health (HFH) program.

¹ Nordentoft M, Wandall-Holm N. 10 year follow up study of mortality among users of hostels for homeless people in Copenhagen. *BMJ*. 2003;327(7406):81. doi:10.1136/bmj.327.7406.81

² Ivers J-H, Zgaga L, O’Donoghue-Hynes B, Heary A, Callway B, Barry J. Five-year standardized mortality ratios in a cohort of homeless people in Dublin. *BMJ Open*. 2019;9(e023010):1-5. doi:10.1136/bmjopen-2018-023010

³ Aldridge RW, Story A, Hwang SW, et al. Morbidity and mortality in homeless individuals, prisoners, sex workers, and individuals with substance use disorders in high-income countries: a systematic review and meta-analysis. *Lancet*. 2017;391(241-250). doi:10.1016/S0140-6736(17)31869-X

⁴ Auerswald CL, Lin JS, Parriott A. Six-year mortality in a street-recruited cohort of homeless youth in San Francisco, California. *PeerJ*. 2016;4(e1909):1-13. doi:10.7717/peerj.1909

⁵ Fazel S, Geddes JR, Kushel M. The health of homeless people in high-income countries: descriptive epidemiology, health consequences, and clinical and policy recommendations. *Lancet*. 2014;384(9953):1529-1540. doi:10.1016/S0140-6736(14)61132-6

⁶ Culhane DP, Metraux S, Byrne T, Stino M, Bainbridge J. The age structure of contemporary homelessness: evidence and implications for public policy. *Anal Issues Public Policy*. 2013;13(1):228-244. doi:10.1111/aip.12024

1. Los Angeles County Department of Public Health, Center for Impact Evaluation. Recent Trends in Mortality Rates and Causes of Death Among People Experiencing Homelessness in Los Angeles County, October 2019.



Actions to Update Existing Policies

B. Address Health Inequities and Protect Vulnerable Users

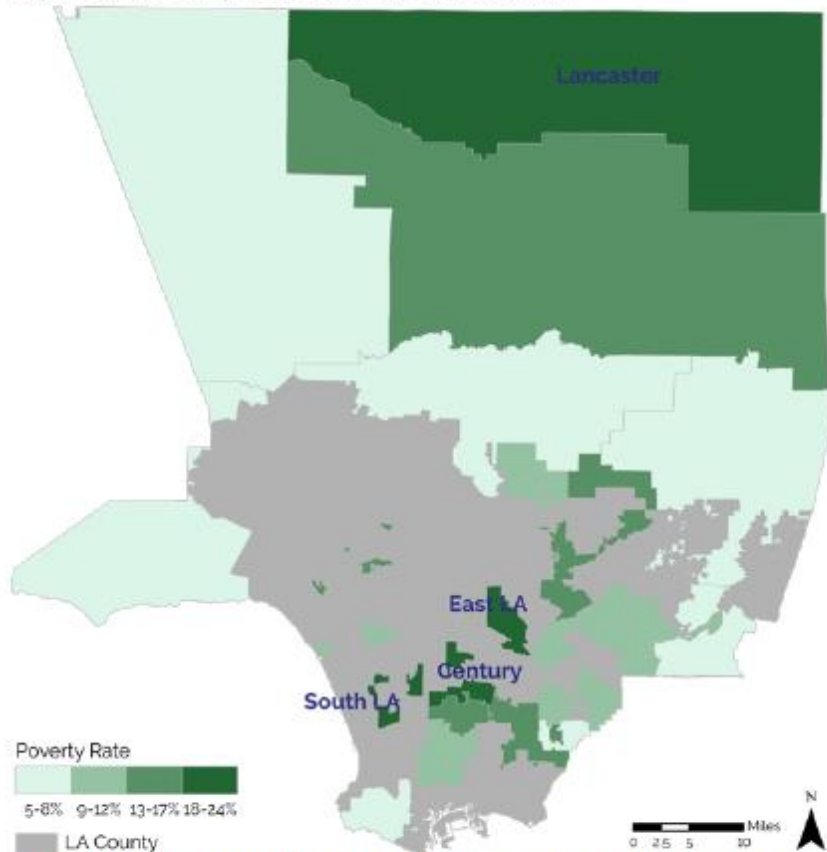
Data has shown that severe injury and fatal collisions disproportionately impact vulnerable roadway users (i.e. pedestrians and bicyclists). With health equity as a guiding principle, the County

is committed to leveraging Vision Zero actions to help address current health inequities in the transportation system.

Action	Partners	Year 1	Years 2-5
Implement programs and amend existing County policies to ensure certain populations are not unduly burdened			
B-1: Create a coordinated approach to law enforcement and community engagement in unincorporated communities.	Lead: DPH Support: CHP, LASD, Public Works	Convene partners	Ongoing action
B-2: Identify process and partners for establishing a diversion program for persons cited for infractions related to walking and bicycling.	Lead: DPH Support: LACDA	Initiate action	Establish program
B-3: Identify process and partners to consider revising the Los Angeles County Municipal Code to allow the operation of bicycles on sidewalks.	Lead: DPH Support: Public Works, County Counsel, LASD	Initiate action	Complete action and report findings

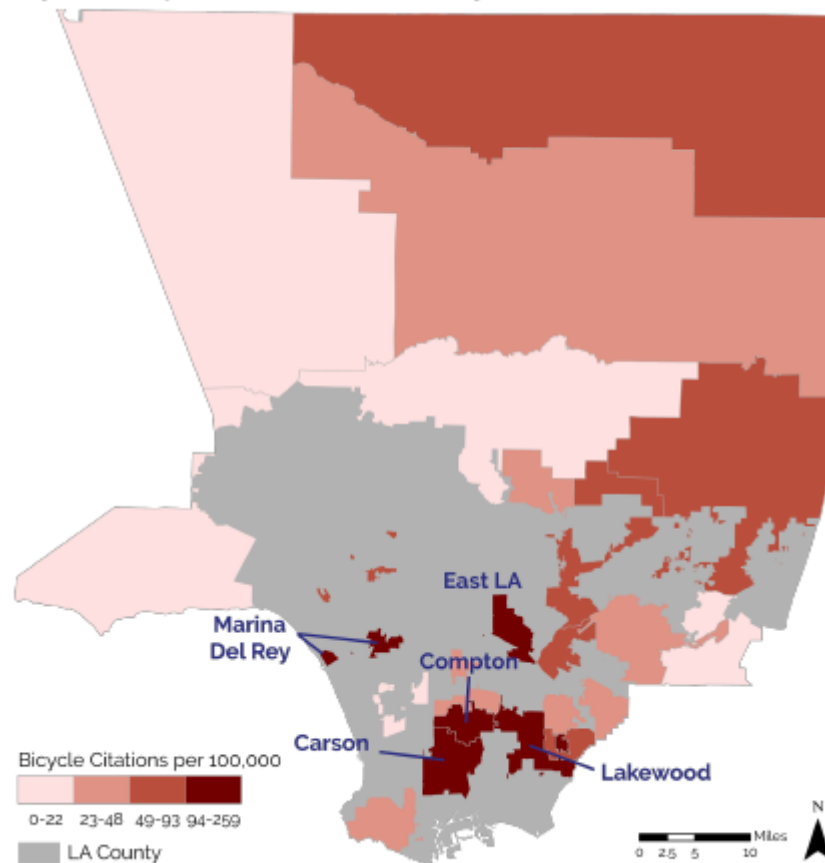
Actions to Update Existing Policies

Figure 10. Poverty Rate by LASD Station Area



Source: (Los Angeles County Sheriff's Department, 2019a, 2019b; U.S. Census Bureau, 2018)

Figure 2. Top 5 LASD Stations for Bicycle Citations



Source: (Los Angeles County Sheriff's Department, 2019a; U.S. Census Bureau, 2018)

Creative Collaborations & Media Campaigns



OUR RELATIONSHIP HAS BECOME TOXIC.

IT'S TIME TO BREAK UP WITH TOBACCO.

FREE HELP. NO EXCUSES.

LastDragLA.com

1-800-NO-BUTTS

#DoneWithYou





Questions?

Contact: Alexis Lantz - alantz@ph.lacounty.gov



Significance of Partnerships

Dr. Susie López-Guerra, Director of Community Relations, Santa Ana Unified School District




Significance of Partnerships




SANTA ANA UNIFIED SCHOOL DISTRICT

FACTS AT A GLANCE

2019-2020

VISION  We will work collaboratively and comprehensively with staff, parents, and the community to strengthen a learning environment focused on raising the achievement of all students and preparing them for success in college and career.

MISSION  We assure well-rounded learning experiences, which prepare our students for success in college and career. We engage, inspire, and challenge all of our students to become productive citizens, ethical leaders, and positive contributors to our community, country and a global society.



- 4** Educational Options Secondary Schools
- 1** Dependent Charter
- 1** Child Development Center
- 3** Early Childhood Education Programs
- 1** Deaf and Hard of Hearing Regional Program K-6



Enrollment of approx. **47,000** students



Approx. **5,000** employees

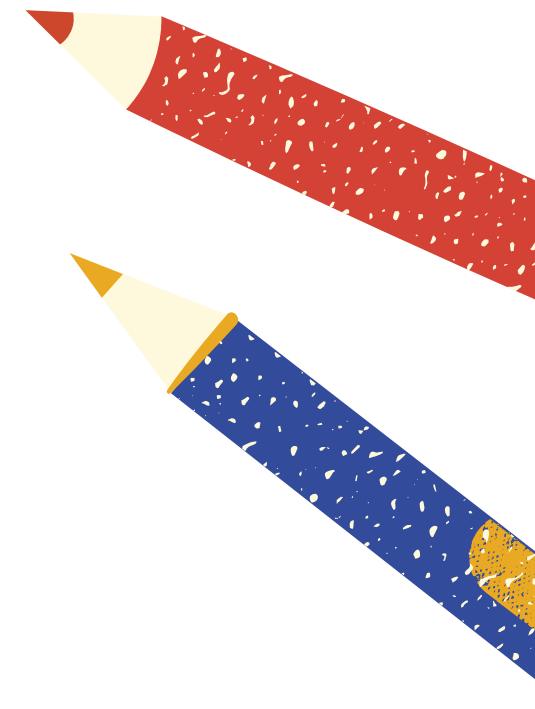
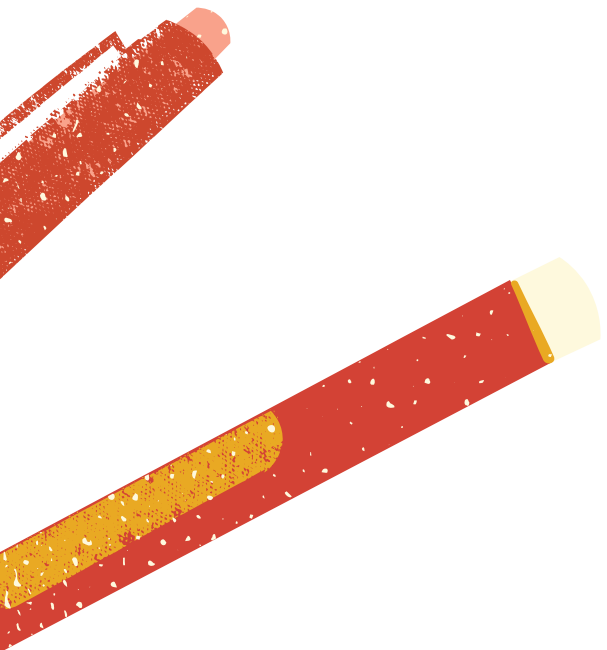
Geographic size **24** square miles

10th largest school district in California

88% Free/Reduced Lunch

DEMOGRAPHICS

STUDENT RACIAL-ETHNIC COMPOSITION
96.1% Hispanic
2.0% Asian



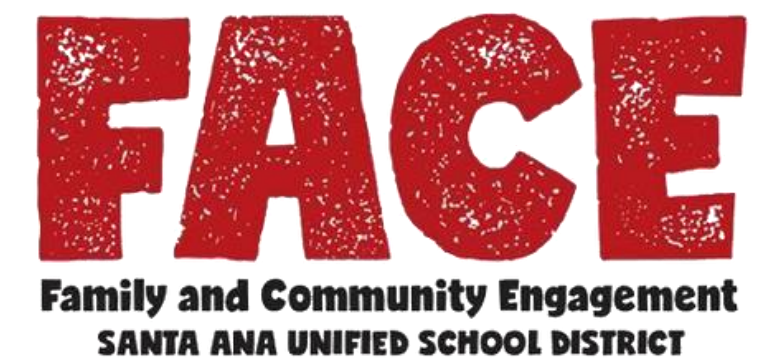
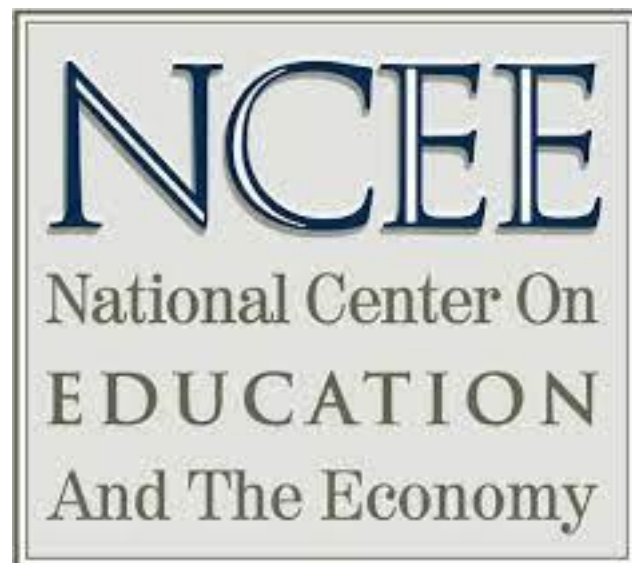
LCAP Goal #2:

Stakeholder Engagement & Communication

“Establish collaboration and communication across all levels of the district among students, staff, families and communities.”



Office of Community Relations



Family and Community Engagement



Definition of Family Engagement

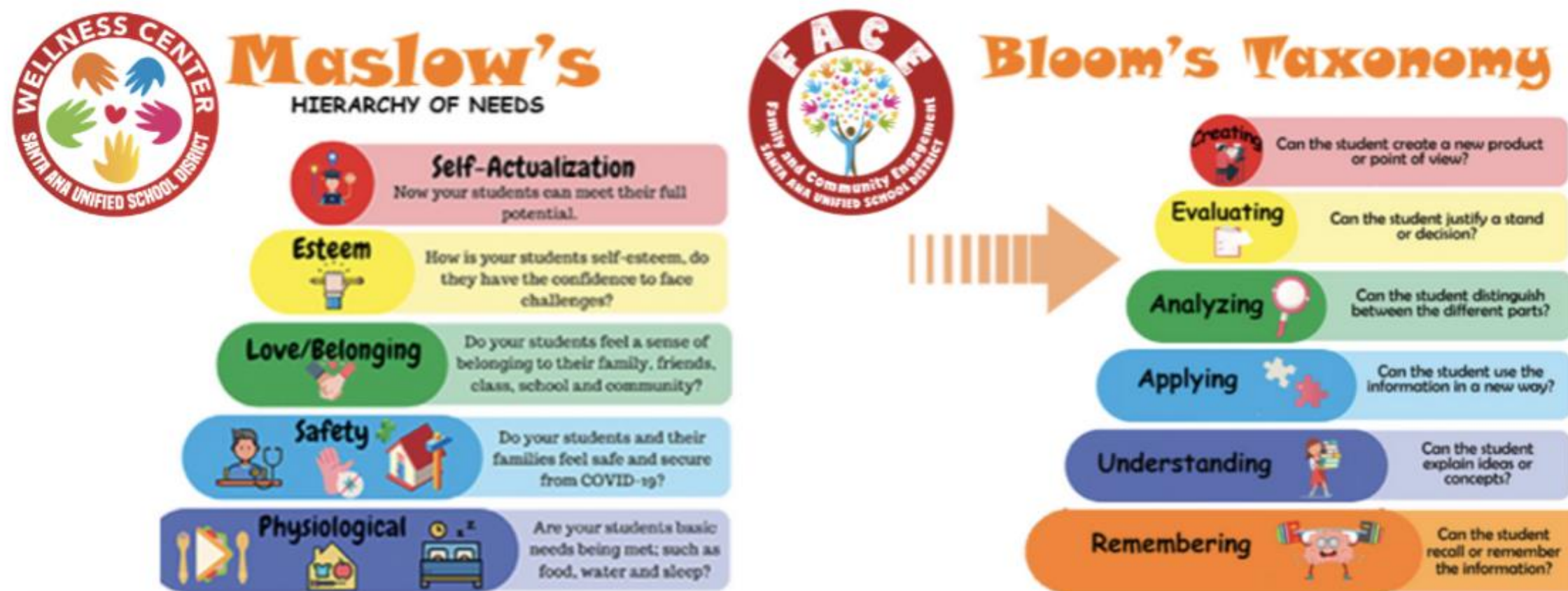
Family Engagement is a full, equal, and equitable partnership among families, educators, and community partners to promote children's learning and development from birth through college and career.



"Students have to Maslow before they can Bloom."

The focus of the practice of Family and Community Engagement (FACE) is to support the academic and socio-emotional well being of all students. In order for students to succeed, we understand that their basic needs (Maslow's) must be met to achieve socio-emotional well being and in turn they will be able to succeed academically (Bloom's). In SAUSD, we meet the

Maslovian needs of students and families through our Wellness Centers. Wellness Centers are resource hubs at each SAUSD school site that are accessible to all individuals. The focus of the Family and Community Engagement team is to build relationships with all stakeholders with a focus on the academic success of all students (linked to learning). We invite you to visit a Wellness Center or to connect with your SAUSD FACE Department in addressing the success of all students.



Relationships & Engagement

Relationships & Engagement



THE ORANGE COUNTY
HISPANIC EDUCATION
ENDOWMENT FUND



Habitat
for Humanity®



It takes a village



SANTA ANA
CHAMBER OF
COMMERCE



SRE
CONSULADO DE MÉXICO
EN SANTA ANA



CHAPMAN
UNIVERSITY



SECOND
HARVEST
FOOD
BANK
ORANGE COUNTY Am



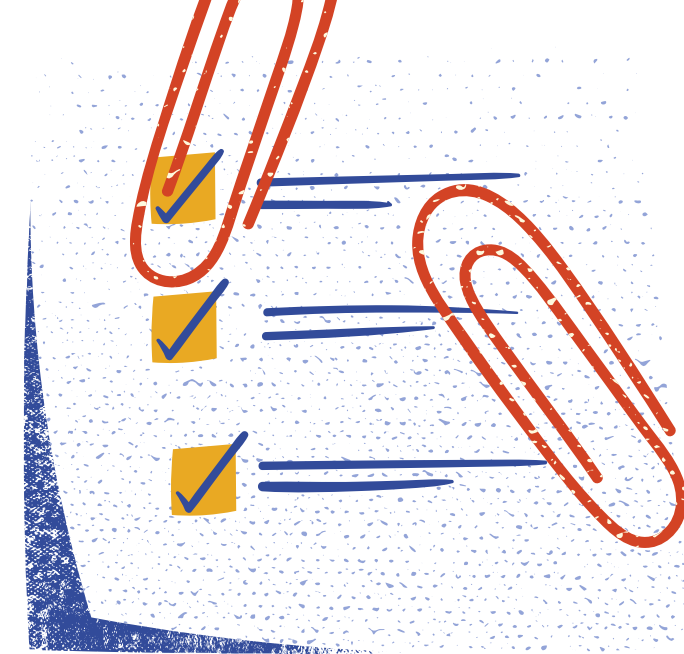
Representative Lou
Correa
FOR CALIFORNIA'S 46TH DISTRICT

How does our role support the practice of FACE in SAUSD?

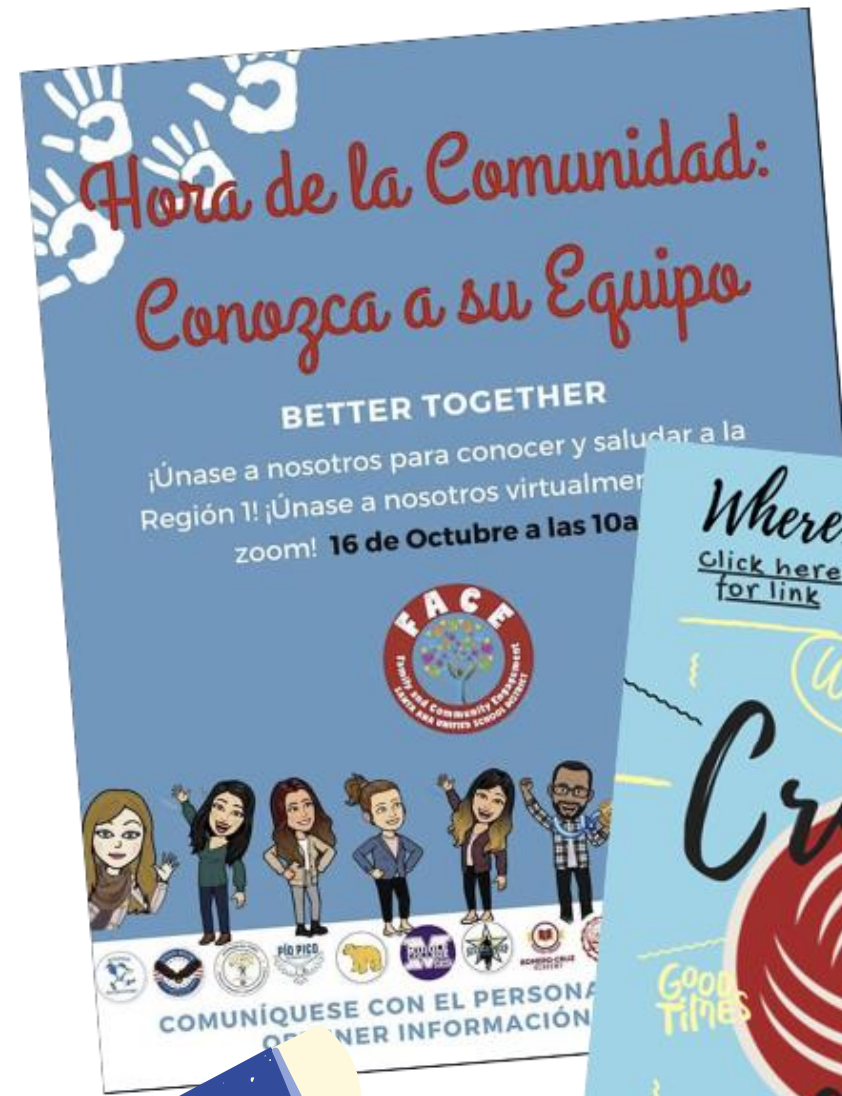
Engagement is based on relational trust. It involves listening, doing **“with”** families, honoring and valuing family contributions and using their assets to determine how they can contribute and partner.



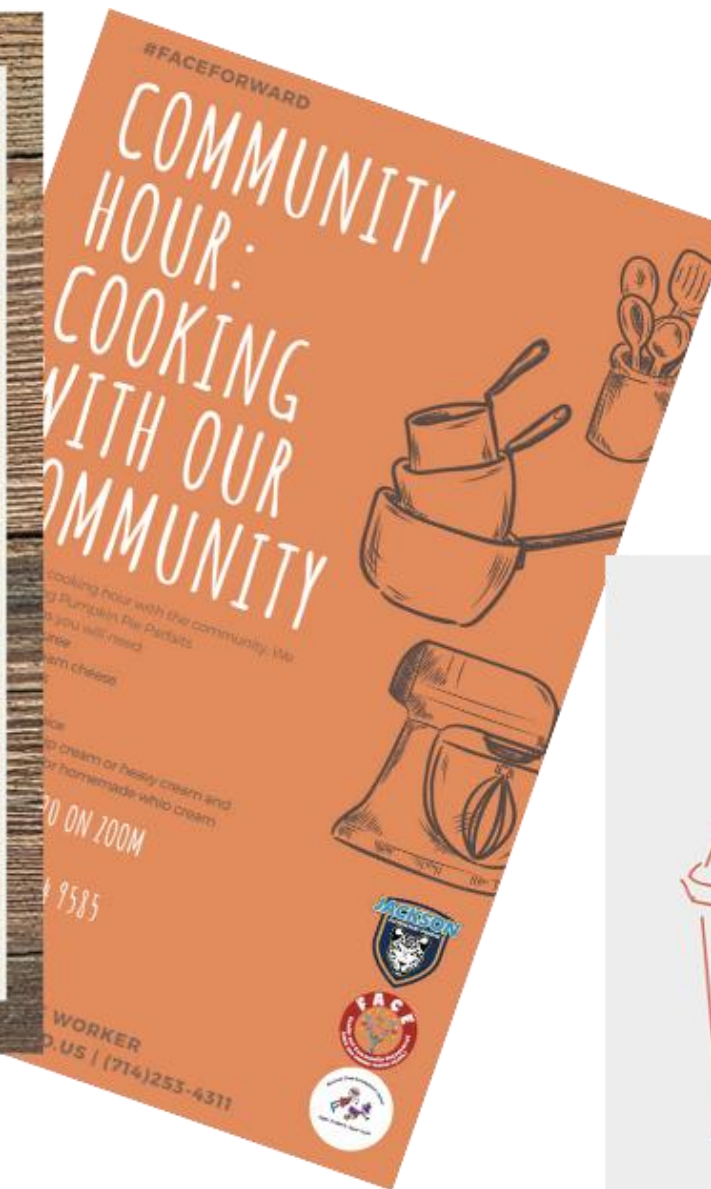
Relationship Building



IceBreakers & Community Builders in all meetings



Community Hours



Consistent/Reliant communication



VIRTUAL WELLNESS CENTER
ESQUEDA K-8



COFFEE CHAT W/ FERNANDO

Connect with me via Zoom every Thursday from 3-4PM.

Meeting ID: **817 3973 9167**
Meeting Password: **697075**

Fernando Moreno, Family and Community Engagement Worker
Phone: 657 - 210 - 2775
Email: fernando.moreno@susd.us
Hours: 7:30AM - 4:00PM



1:1 Support

Where? [Click here for link](#) When? Starting January 14, 2021 Time? 10:00 AM

Wow!

Crochet a Community

enjoy every moment.

Good Times

Bring your own crochet hook and yarn

ALL LEVELS WELCOMED

Zoom Link: 512 646 8060
Passcode: FACE4
Any Questions Call Norma (714) 510-2767





Digital Access and Literacy

- Capacity Building: Digital Literacy
- Email
- Parent Square
- Zoom
- Aeries
- Other Academic Support Tools
- Digital Tools: SAUSD FACE Google Site



YOU ARE INVITED TO
TECHNOLOGY HOUR
Mondays 2:00-3:00PM
Zoom ID: 782 337 4404
Password: FACE
Click [here](#) to connect

Connect with me during my Technology Hour for help with Aeries, Parent Square and Email

SEE YOU ON ZOOM!
MEETING ID: 535 614 9585
PASSWORD: FACE

MIRCA.GARCIA@SAUSD.US | 714.253.4311

Luciana Machado-Diaz
FACE Liaison
luciana.machado-diaz@sausd.us
949-424-3156

Technology Hour at the Wellness Center

Do you need extra support navigating your child's virtual classes?
Join me on Zoom every Tuesday at 10am!
No appointment necessary.
Meeting ID: 865 5044 3472
Password: face

Questions?
Call Anna Vilchis
FACE Worker
(657)205-9880

JOIN US ON MONDAY, JANUARY 4 AT 5 PM!
ST Math (Jiji) 101 for parents

Tips for supporting your student in Jiji (math)
Join this virtual workshop with Ms. Martinez via Zoom!

Zoom Meeting ID: 948 1274 7258
Password: 4956



FACE
Family and Community Engagement
Santa Ana Unified School District

MAP TESTING HOW TO PREPARE

GET 8 HOURS OF SLEEP

- A FULL NIGHTS REST WILL PREVENT YOU FROM FALLING ASLEEP OR NOT FOCUS DURING THE MAP TEST. SLEEP IS IMPORTANT!

HAVE A HEALTHY BREAKFAST

- EATING BREAKFAST WILL HELP YOU FOCUS MUCH BETTER
- YOU CAN NOT FOCUS ON AN EMPTY STOMACH

SET A COMFORTABLE SPACE

- SIT UP STRAIGHT. DO NOT LEAN DOWN WHILE TAKING THE TEST
- HAVE YOUR SPACE WITH NATURAL LIGHTING. WHEN YOUR ROOM IS DARK, IT CAN MAKE YOU FEEL TIRED

#FACEFORWARD

Let's go!

GET READY FOR PARENT-TEACHER CONFERENCE

JOIN ME FOR A CAPACITY BUILDING SESSION BASED AROUND PARENT-TEACHER CONFERENCE: HOW TO PREPARE, WHAT TO EXPECT, EFFECTIVE COLLABORATION

NOVEMBER 4, 2020 FROM 2:00 - 3:00
MEETING ID: 535 614 9585
PASSWORD: CONFERENCE

MIRCA GARCIA - FACE WORKER
MIRCA.GARCIA@SAUSD.US | (714)253-4311

Consejos para Aprender por Distancia

¡Hola familias! Únase a nosotros en esta serie de 3 semanas para apoyar mejor el aprendizaje a distancia de su hijo.

Diciembre 1: Sesión 1 @2PM
Importancia de rutinas

Diciembre 8: Sesión 2 @2PM
Rutinas de mañana y hora de dormir

Diciembre 15: Sesión 3 @2PM
Consejos de rutinas para ser exito

ZOOM
ID de Reunión: 853 6143 0721
Contraseña: 433804

para soporte técnico, llame (714)698-9287

PIQ PICO
Carina Valencia

Let's Build Your Child's Future Together

English: 1:00 - 2:00 pm
Spanish: 2:00 - 3:00 pm

Join Zoom Meeting
<https://sausd.zoom.us/j/1707798296>

We will be sharing tips on how we can work together to support your child's career goals.

January 11th 2021

Virtual Museum: Field Trip for Families

THIS EVENT IS OPEN TO ALL!

Join us and learn about various virtual field trips to museums. This a great way to learn about other museums and take a trip right from your home. See you all there!

Jan. 18
2:30-3:30 PM

Via Zoom
Meeting ID: 936 6160 4374
Passcode: museum

Daisy Aldana
Family and Community Engagement Worker
daisy.aldana@sausd.us
714.794.8763

CÉSAR E. CHAVEZ HIGH SCHOOL COUNSELOR CHAT

PLÁTICA CON EL CONSEJERO

MARTES | TUESDAY
JANUARY 5TH AT 2:30PM

PLEASE JOIN US FOR OUR COUNSELOR CHAT

- DISCUSS HOW YOU CAN SUPPORT YOUR STUDENTS COLLEGE PATHWAY
- HOW YOUR STUDENT CAN AFFORD COLLEGE WITH FINANCIAL AID

ACOMPÁÑENOS PARA UNA PLÁTICA CON EL CONSEJERO

- APRENDA CÓMO PUEDE APOYAR EL CAMINO AL COLEGIO DE SU ESTUDIANTE
- CÓMO SU ESTUDIANTE PUEDE CALIFICAR PARA AYUDA FINANCIERA

CAN I AFFORD COLLEGE?

JOIN HERE! ENTRAR AQUÍ!

QUESTIONS? PLEASE CALL/TEXT: MS. ANGIE BAHENA, FACE LIAISON AT: PREGUNTAS? FAVOR DE LLAMAR O ENVIAR TEXTO A: SRITA ANGIE BAHENA, ENLACE DE FAMILIA Y COMUNIDAD AL (714) 202-7202

CESAR.CHAVEZ_FACE
PRINCIPAL_TRUCKER

FACE WE CARE

SEGERSTROMS GATE PARENT MEETING

Learn about the difference between GATE, Honors and AP Classes. Help your child be strategic about choosing classes for next school year.

PLEASE JOIN US FOR OUR PARENT GATE MEETING

JANUARY 12, 2020 6-7 PM

ZOOM ID: 850 2230 9389
PASSCODE: 630620

If you have any question Please feel free to reach out to Jennifer Anaya Sanchez at 657-549-4960





Wellness: Resources and Outreach



SAUSD FACE

COMMUNITY
RESOURCE SUPPORT LINE

Monday-Friday 8 a.m.-4 p.m.

call **(714)558-5677**

<https://www.sausd.us/covid19resources> 

Resource Lines
37 Resource Lines
36 staff lines
1 District Resource Line

Community Resource Drive
& LinkTree



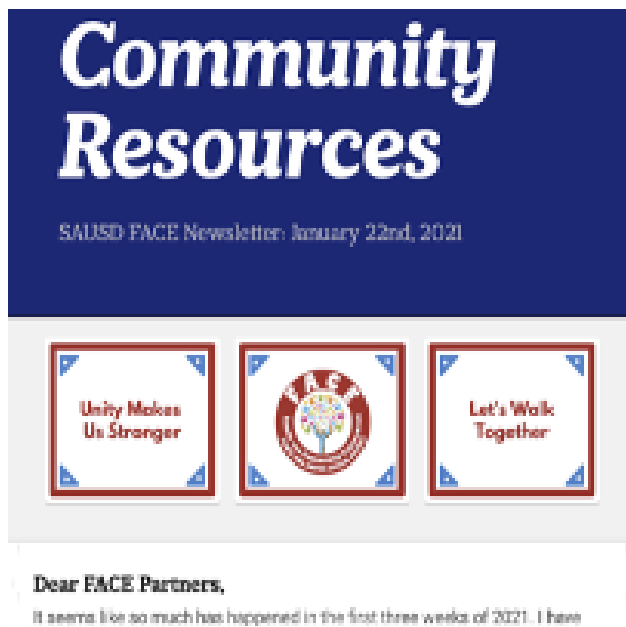

Wellness Centers



Follow us
@sausdface

Classes • Events • Workshops • Resources
Join us!
www.sausd.us


@SAUSDFace on Facebook



Community Resources

SAUSD FACE Newsletter: January 22nd, 2021

Unity Makes Us Stronger



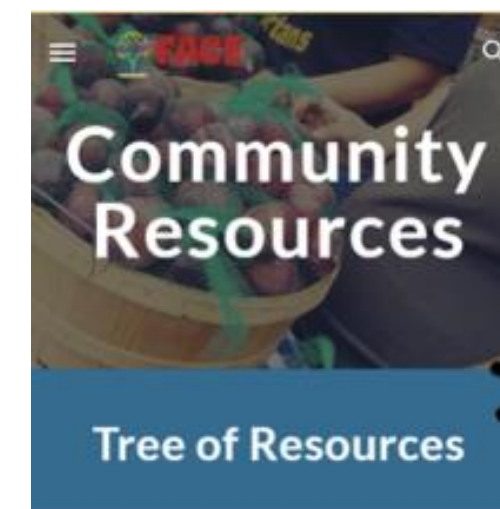
Let's Walk Together

Dear FACE Partners,
It seems like so much has happened in the first three weeks of 2021. I have

Smore Newsletter

SAUSD FACE Google Site
<https://bit.ly/sausd-face>

ParentSquare

Community Resources

Tree of Resources



Impact of Relationships



Staying Connected Department Impact Report APRIL 2021

11,193



Total Points of Contact by 36 FACE Partners



Academic Support

1,713*

through resources, capacity building opportunities and referrals linked to academic student success.



Technology Support

1,071*

through resources, capacity building opportunities, referrals, connections linked to academic student success.

675,583

TOTAL OUTREACH to families, staff, and the community.



2,956*

TOTAL REFERRALS to SAUSD departments and community partners.

238

TOTAL WORKSHOPS



5,453*

NUMBER OF ATTENDEES

*These numbers were counted to reflect the total points of contact

@SAUSDFACE

bit.ly/sausd-face

bit.ly/face-de-sausd

Family and Community Engagement 2021

New Relationships: Strategy

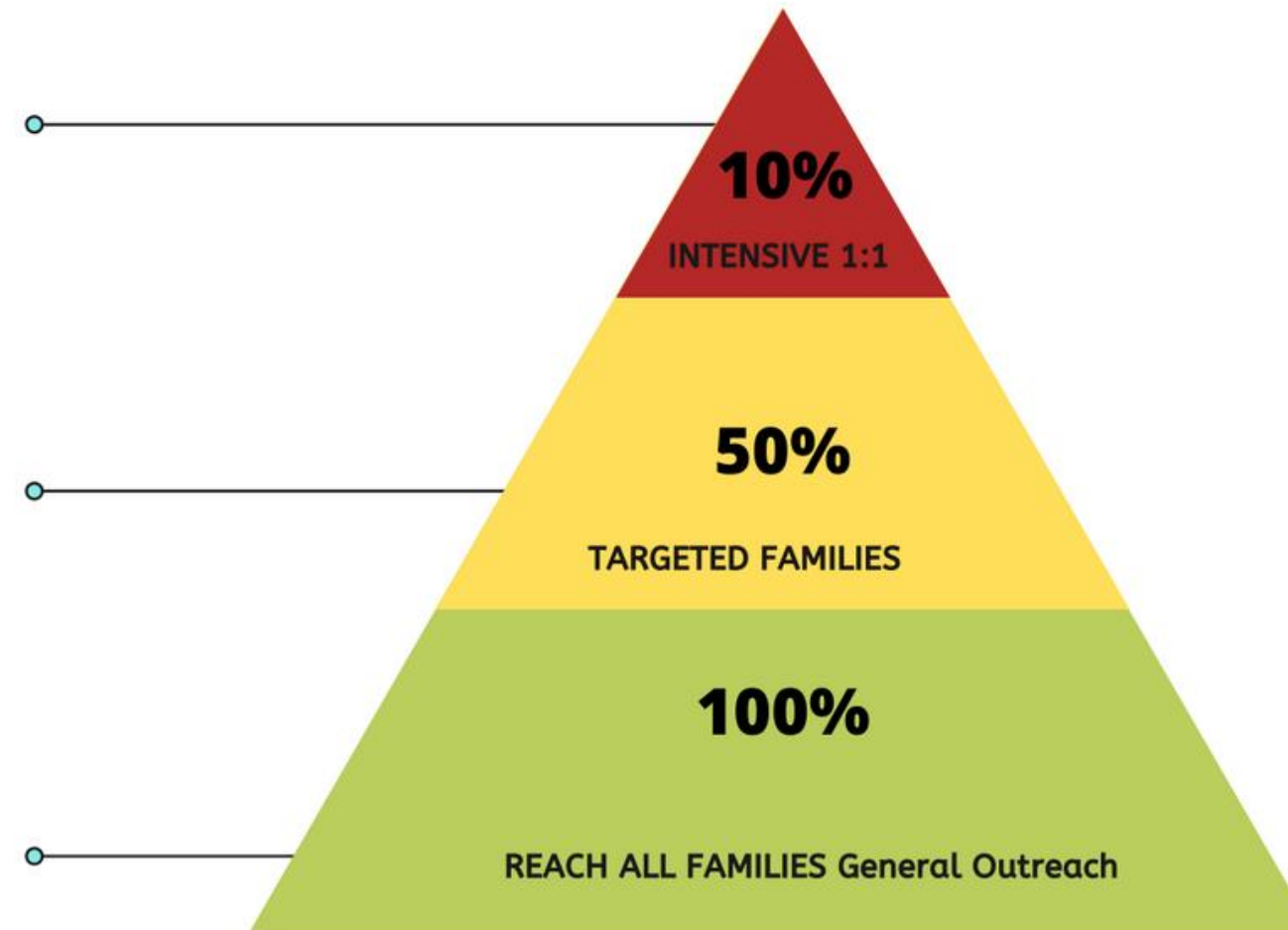


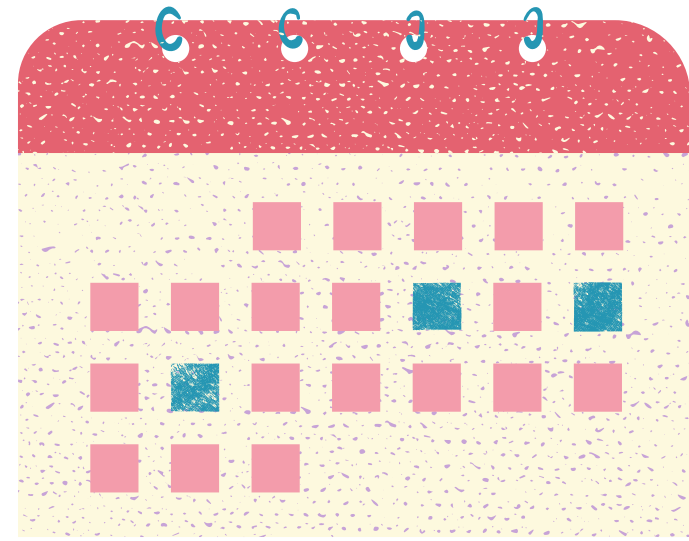
Family and Community Engagement Communication by Tiers

Tier 3 Intensive Supports 1:1 support for Family/Staff

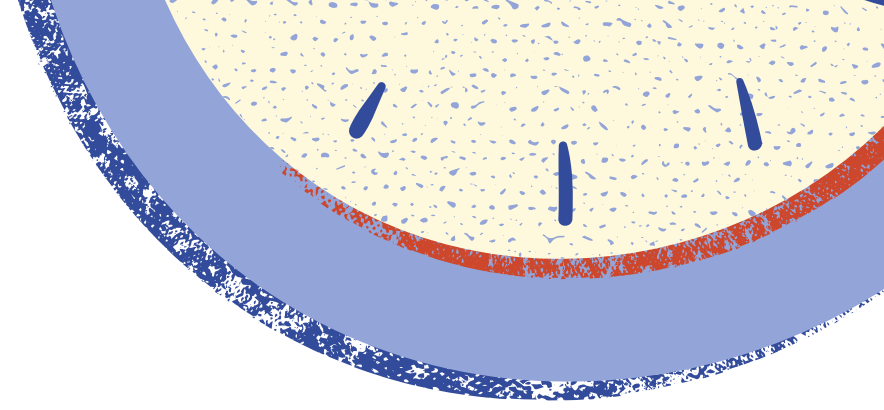
Tier 2 Targeted Supports for Some or Few Families/Staff

Tier 1 District & Community Wide Supports for all families in order to help prevent behavior and academic challenges





Questions?



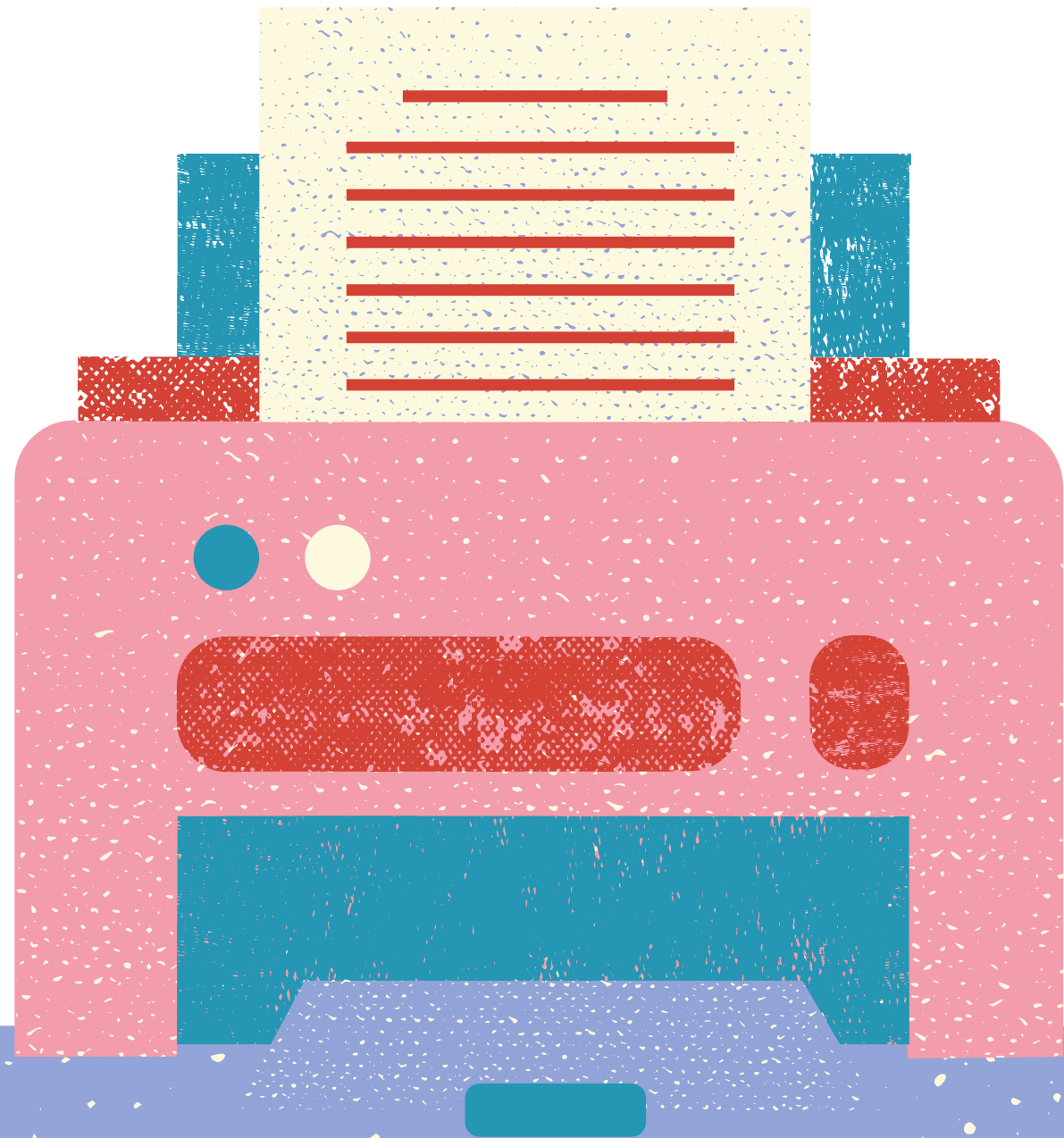
Thank You!



Dr. Susie Lopez-Guerra

susie.lopezguerra@sausd.us

(714) 558-5521



Breakout Session



○ Learning Objectives

- Learn ways to think about and implement the intersections of public health and transportation safety at a practical level.

○ Session Purpose

- How can you apply this information to your community?

Breakout Session Questions



- What did you hear today that made you think weaving public health and traffic safety would work? How could it be improved?

Breakout Session Questions

- What did you hear today that made you think weaving public health and traffic safety would work? How could it be improved?
- What are some of the obstacles in bringing the two closer together? Have you seen these in your jurisdictions?

Breakout Session Questions

- What did you hear today that made you think weaving public health and traffic safety would work? How could it be improved?
- What are some of the obstacles in bringing the two closer together? Have you seen these in your jurisdictions?
- What are some projects you would like to see put in motion?

SCAG's Go Human Traffic Safety Peer Exchanges Evaluation Survey:

<https://bit.ly/SCAGExchangeSurvey>

Sign up for another!

<https://scag.ca.gov/traffic-safety-peer-exchange-events>

We will be posting recordings here:

<https://scag.ca.gov/go-human-safety-resources>

Upcoming Events



Date	Time	Topic
6/29	1 p.m.	Repairing and Investing: Addressing Equity in the Built Environment
7/13	1 p.m.	Human-Centric Safety in Rural Communities (Riverside, San Bernardino, and Imperial Counties)
7/15	11 a.m.	Traffic Safety in the City: Centering Equity and Access (Orange, Riverside, and San Bernardino Counties)
7/20	1 p.m.	Traffic Safety in Suburbia: Serving All Ages (Ventura and Los Angeles Counties)
7/20	1 p.m.	Reimagining Community Safety

Contact the Project Team

SCAG

Courtney Aguirre

aguirre@scag.ca.gov

Cambridge Systematics

Jon Overman

joverman@camsys.com

For more information

<https://scag.ca.gov/go-human>

www.scag.ca.gov

