

LAX Modernization: Bradley West and Beyond

Southern California Association of Governments

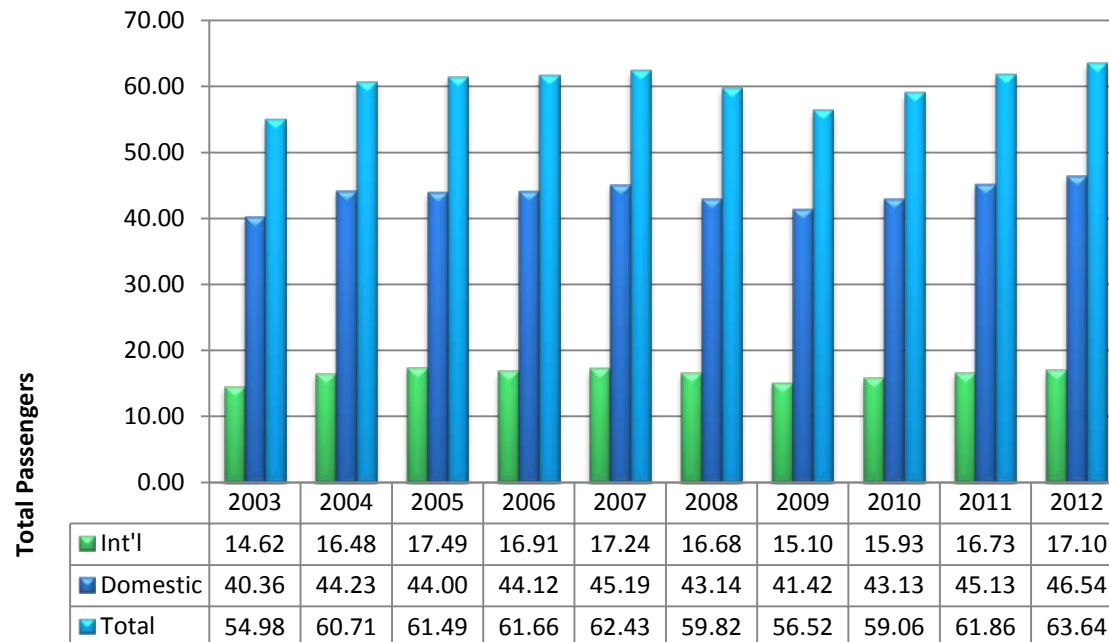
Aviation Technical Advisory Committee

February 27, 2014

Passenger Activity & Forecasted Growth

LAX is the Busiest Origin and Destination Airport in the United States

- 2012 Traffic Exceeded 63 Million Passengers Per Year (63.8 MAP)
- Long-Range plans designed to accommodate 78.9 MAP
- LAX has 680 daily flights to 96 domestic cities, and 930 weekly flights to 59 international cities.
- Recent Trends include Airline Consolidation, Fewer, Fuller Flights



LAX Annual Passengers in Millions
2003-2012

Economic Impact of LAX

Recent Studies by the L.A. Economic Development Corporation (LAEDC) found that:

- LAX already contributes more than \$13.6 billion and 294,400 jobs to the Los Angeles County economy
- A single trans-oceanic flight added \$623 million in economic output and 3,120 direct and indirect jobs in Southern California, and provided \$156 million in wages.
- If LAWA were to undertake \$8.5 billion in future capital projects, it could generate an additional 90,500 job-years in Los Angeles County.

Current Capital Improvements at LAX

Bradley West Terminal



Central Utility Plant



“New Face of the Central Terminal Area”

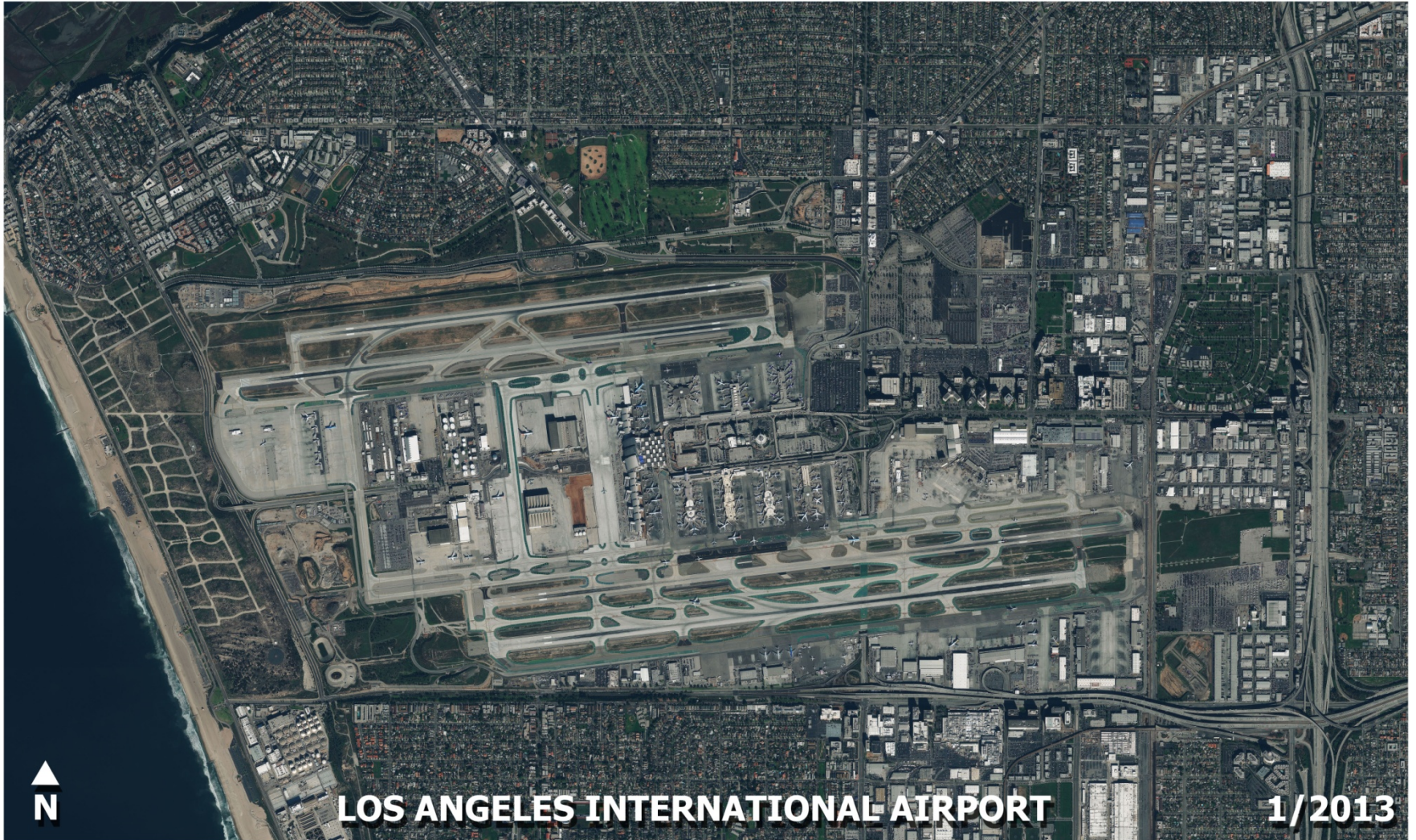


Interior Terminal Renovations

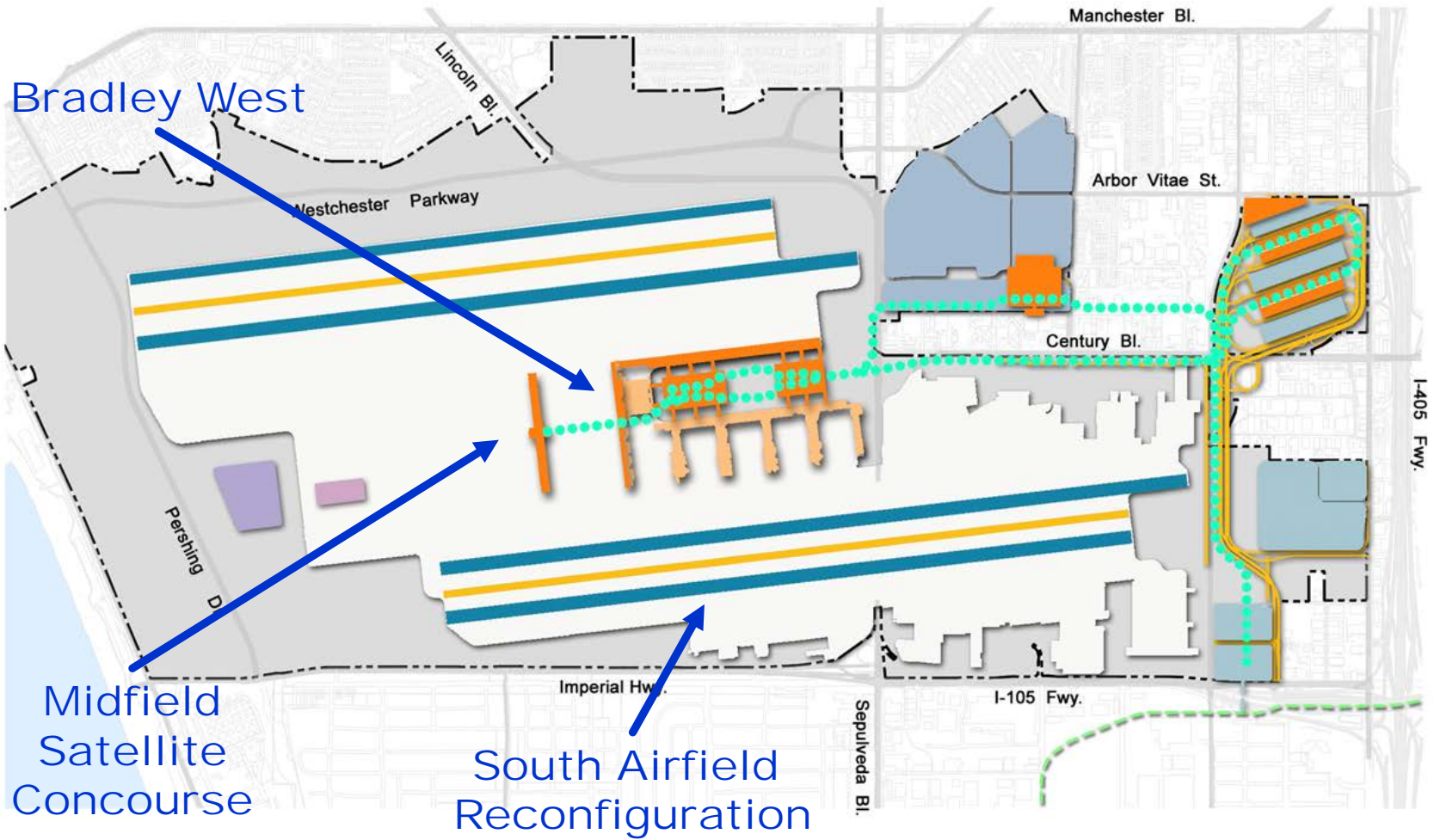


Planning LAX

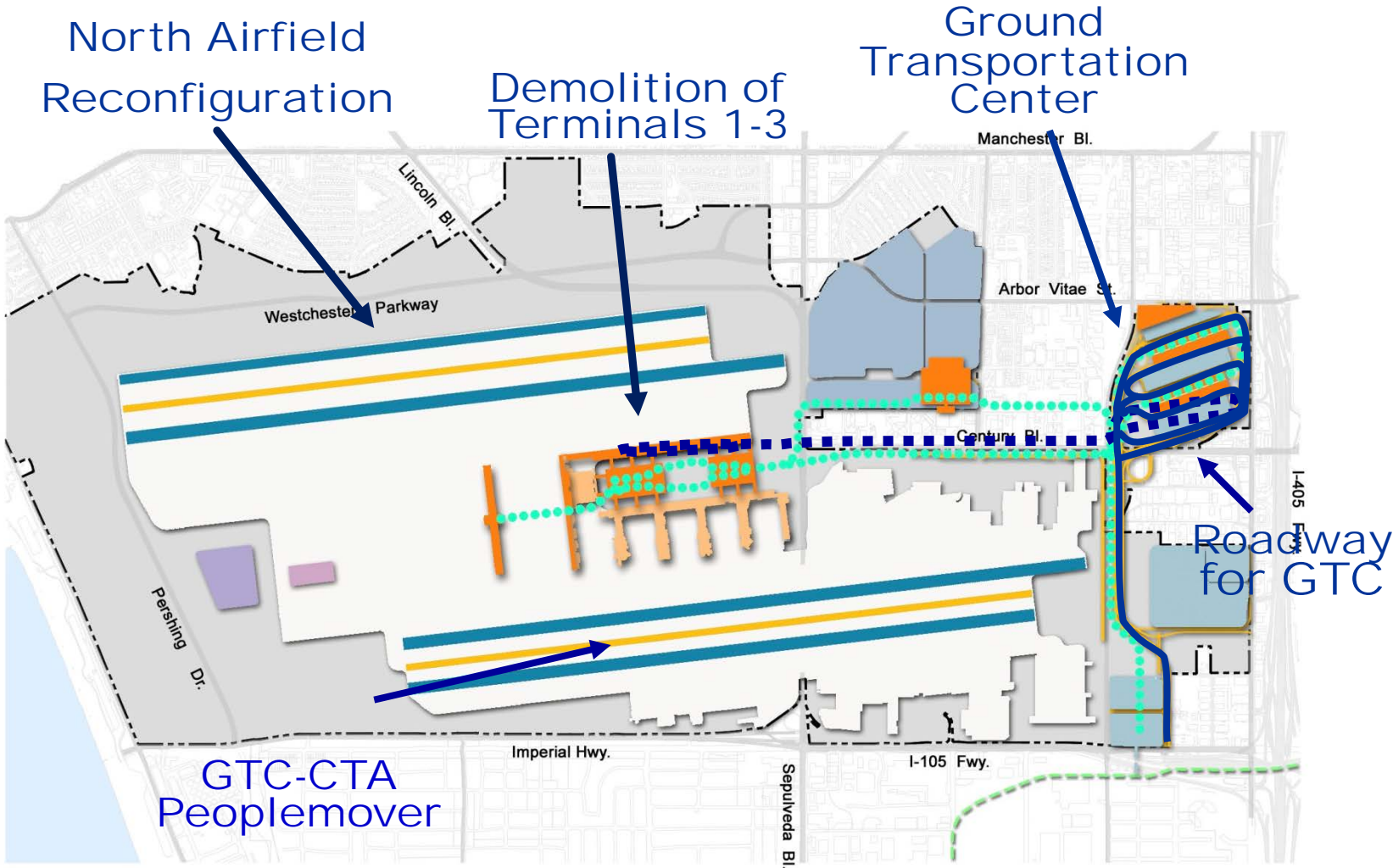
LAX Today



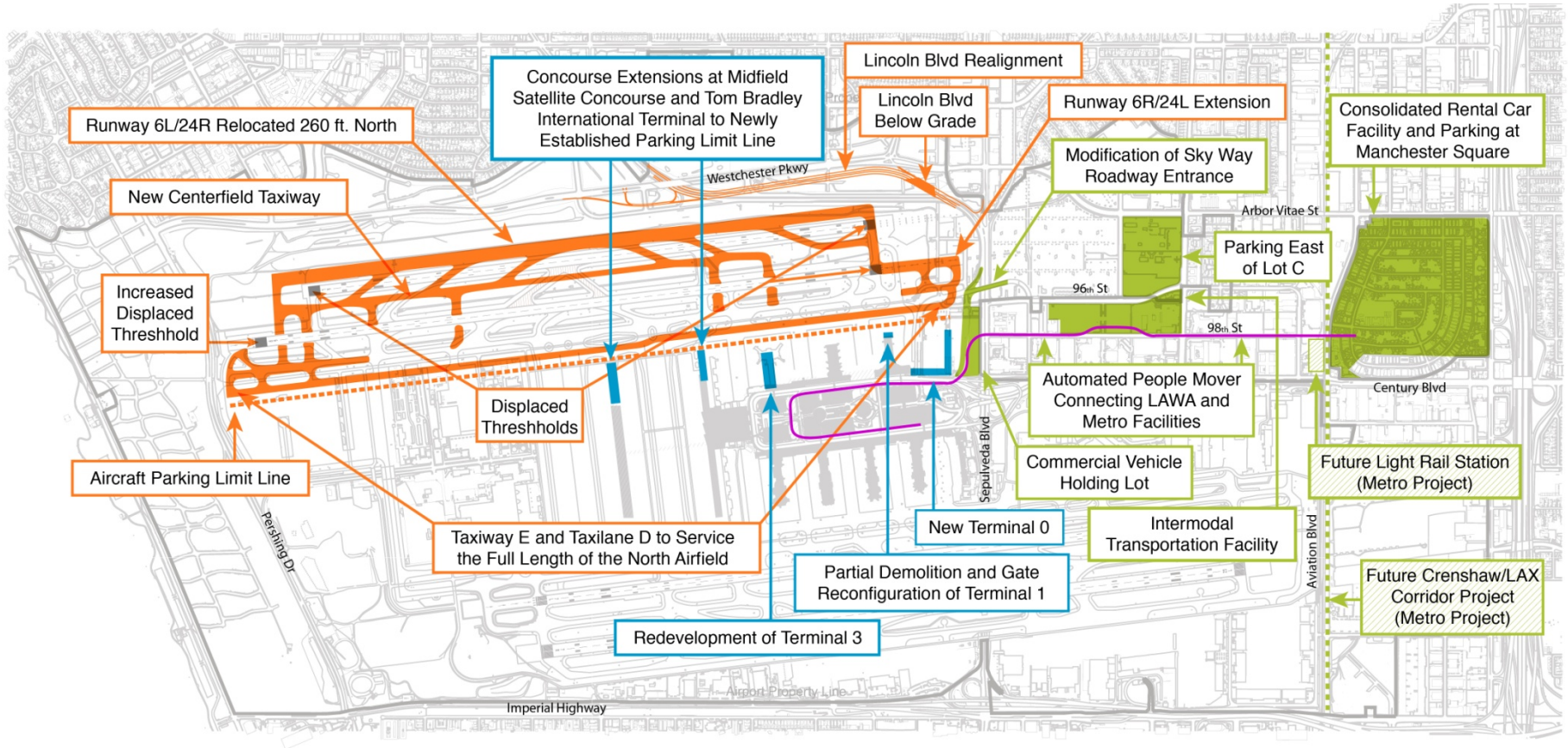
LAX Master Plan (2005)



LAX Master Plan “Yellow Light Projects”

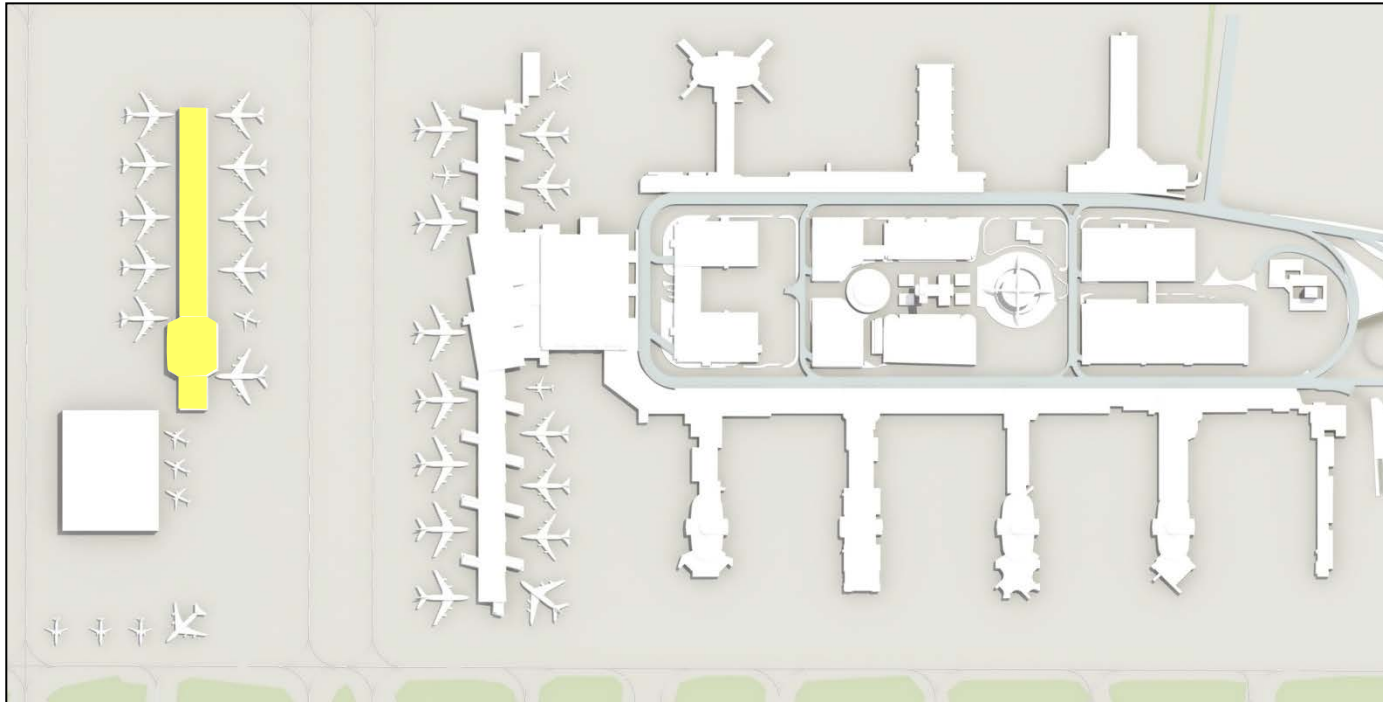


Specific Plan Amendment Study Preferred Alternative (2013)



LAX Projects in Environmental Review

LAX Midfield Satellite Concourse (MSC) Program



- Located in the central area of the LAX airfield west of Tom Bradley International Terminal (TBIT)
- New multi-level concourse (with new taxiways/taxilanes) that will improve terminal operations, concessions and overall passenger experience
- Provides new large aircraft gates that will allow LAWA to modernize and maintain existing facilities (terminals, apron pavement, utilities, etc.)

Los Angeles World Airports (LAWA)

LAX Northside Plan



TOTAL SITE AREA : 340 acres adjacent to LAX

1970's & 80's : Mostly assembled in the 70's and 80's and acquired with FAA grants

1984 : Originally entitled for 4.5 million square feet

USES : Commercial, light industrial, airport support

2004 : Incorporated into LAX Specific Plan

Los Angeles World Airports (LAWA)

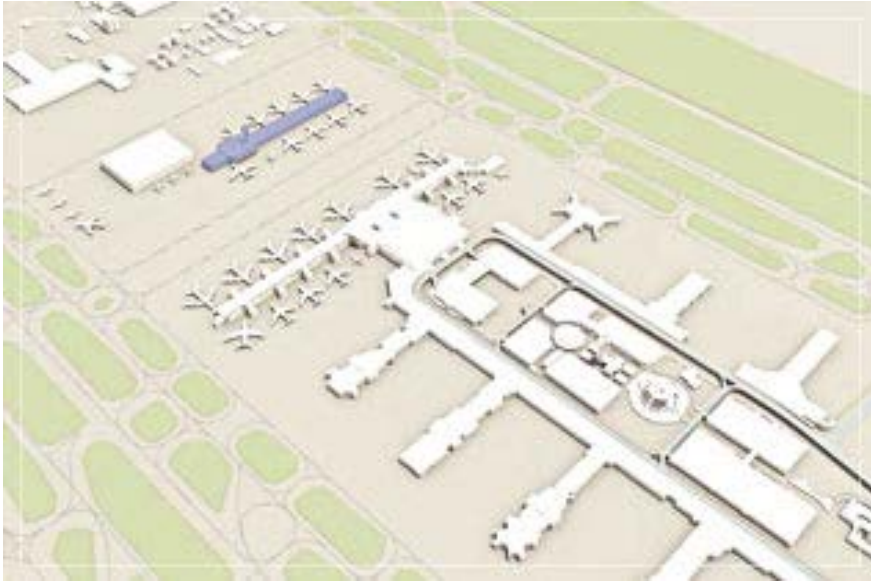
LAX Northside Plan Proposed Update



1,225,000 sf of Office, Research, and Development space

- 270,000 sf of Retail space
- 215,000 sf of Civic / Community space
- Airport support facilities, playing fields, dog park, golf course, and park land

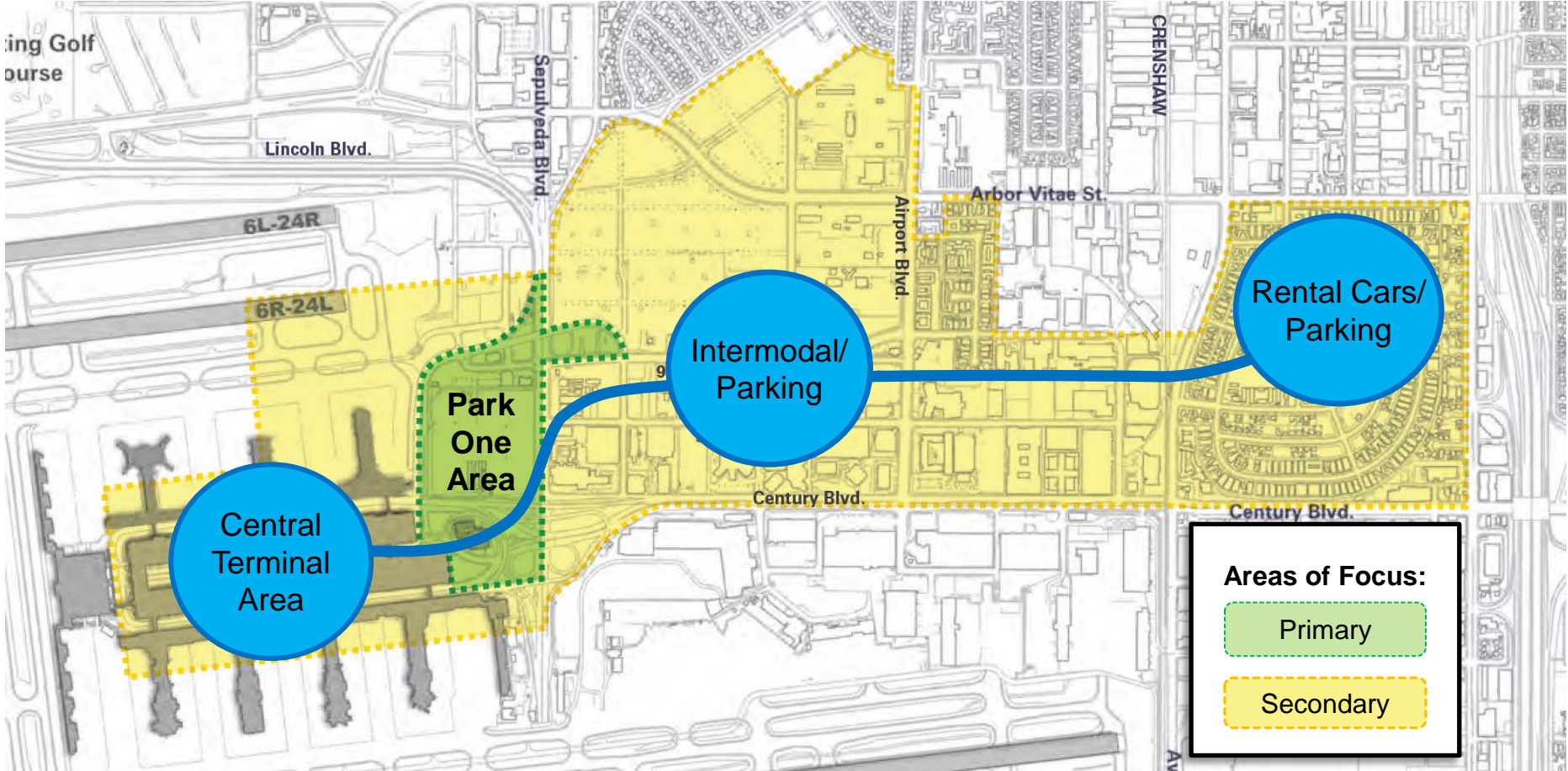
Other LAX Planning Efforts in Environmental Review



- West Maintenance Area
- LAX Sign District
- LAX Runway Safety Area Enhancements

Projects in Planning

Ground Transportation Planning Efforts



Automated People Mover (APM) Systems



Miami International Airport



Dallas/Fort Worth International Airport



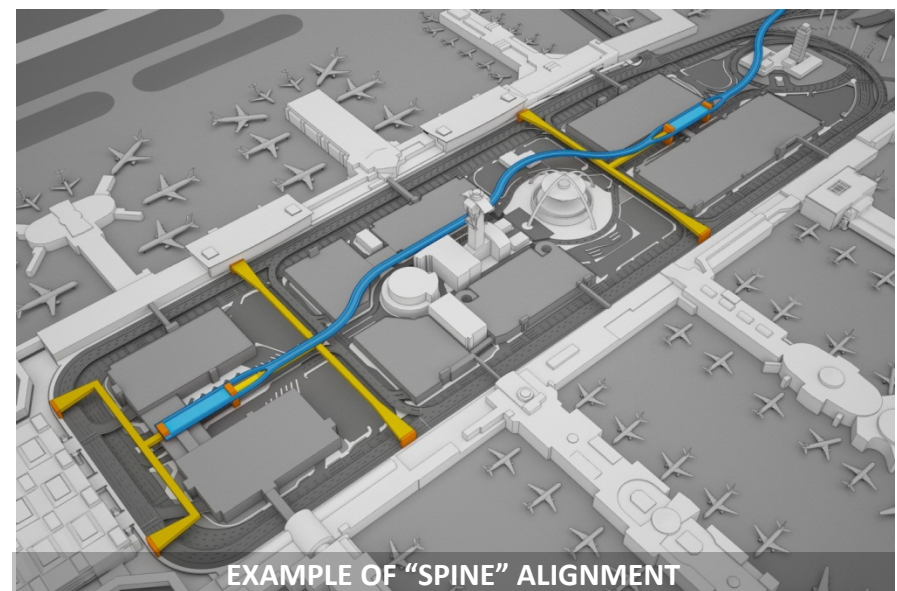
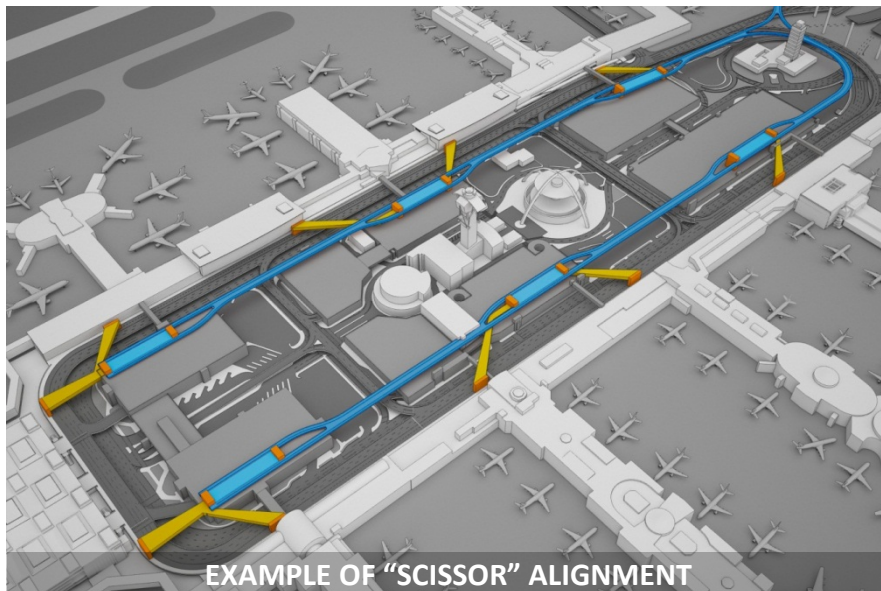
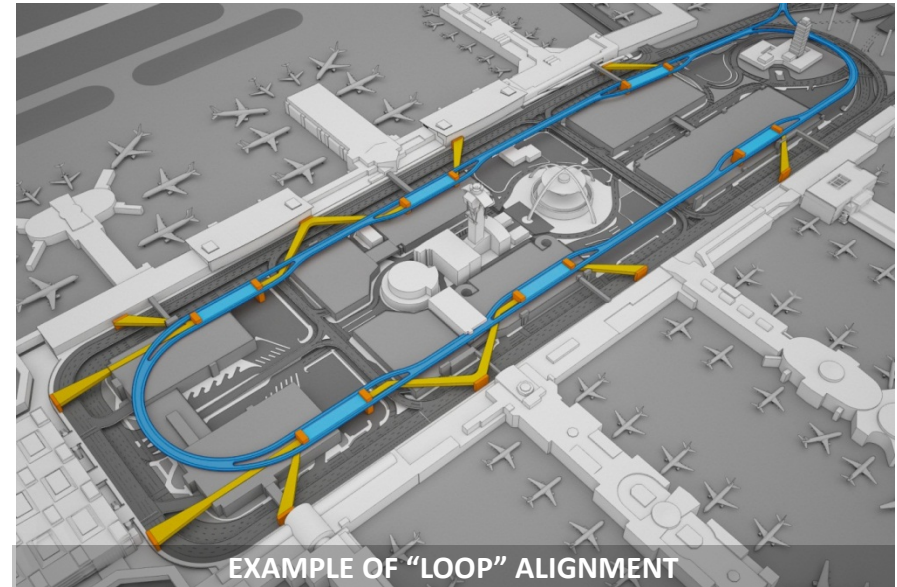
Phoenix Sky Harbor International Airport



John F. Kennedy International Airport

LAX Automated People Mover (APM) System

- LAWA is evaluating each alternative and will select preferred alignment for APM system
- APM alignments under study within the Central Terminal Area (CTA) include three basic types:
 - Scissor Alignments
 - Loop Alignments
 - Spine Alignments

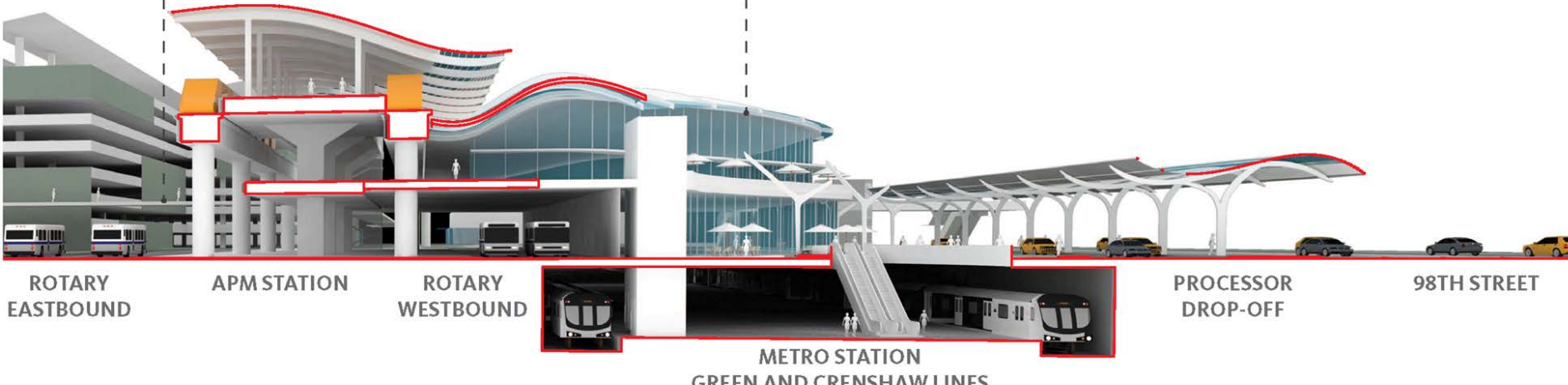


Intermodal Transportation Facility

Potential ITF Features:

- Likely Phased Development
- Rotary for shuttles and other vehicles
- Remote Check-In (Kiosks)
- Remote pick-up and drop-off
- Relocated Parking
- APM Connection to Terminals
- Remote Bag Check
- Processing Facility
- Walkways to adjacent facilities
- Additional Parking
- Potential collateral development
- Potential Light Rail Station

ITF Final Phase with Light Rail Station Concept



Manchester Square/ConRAC Program



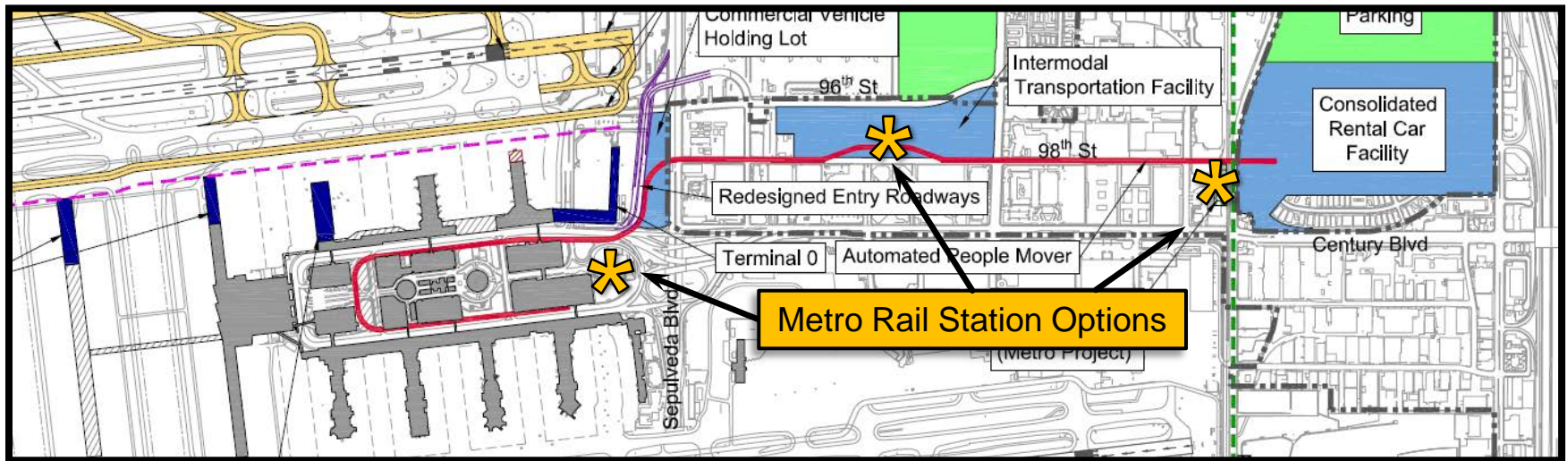
San Jose International Airport ConRAC



Miami International Airport ConRAC

- BOAC Awarded Consultant Contract for Planning and Development of ConRAC in February 2014
- Site plan, traffic access, and internal circulation plan to be developed
- Manchester Square residences currently in voluntary acquisition program

Transit Connections at LAX – Light Rail and Metro



- The SPAS Adopted Alternative includes an Automated People Mover (APM) to circulate within the CTA and to other airport facilities and serve private and public transit users.
- In a parallel effort, LAWA is collaborating with Metro to identify convenient connections to LAX. As part of the Airport Metro Connector project, LAWA is working with Metro examining potential methods to connect Crenshaw/LAX Corridor and Green Line passengers “to the airport”.
- The SPAS Adopted Alternative preserves two additional opportunities to connect Metro light rail directly “to the airport”.

For More Information

- General LAX Planning Information – ourlax.org
- Specific Plan Amendment Study – laxspas.org
- Northside – laxnorthside.org
- Midfield Satellite Concourse - lawa.org/mscnorth
- Construction and Operations:
 - Construction Hotline – 310-649-LAWA
 - Noise Hotline – 424-64-NOISE