



SOUTHERN CALIFORNIA  
ASSOCIATION OF GOVERNMENTS  
900 Wilshire Blvd., Ste. 1700  
Los Angeles, CA 90017  
T: (213) 236-1800  
www.scag.ca.gov

#### REGIONAL COUNCIL OFFICERS

President  
Jan C. Harnik, Riverside County  
Transportation Commission

First Vice President  
Art Brown, Buena Park

Second Vice President  
Curt Hagman, County of  
San Bernardino

Immediate Past President  
Clint Lorimore, Eastvale

#### COMMITTEE CHAIRS

Executive/Administration  
Jan C. Harnik, Riverside County  
Transportation Commission

Community, Economic &  
Human Development  
Frank Yokoyama, Cerritos

Energy & Environment  
Deborah Robertson, Rialto

Transportation  
Ray Marquez, Chino Hills

## MEETING OF THE

# COMMUNITY, ECONOMIC AND HUMAN DEVELOPMENT COMMITTEE

***Members of the Public are Welcome to Attend  
In-Person & Remotely***

***Thursday, April 6, 2023  
9:30 a.m. – 11:30 a.m.***

### ***To Attend In-Person:***

**SCAG Main Office – Policy B Meeting Room  
900 Wilshire Blvd., Ste. 1700  
Los Angeles, CA 90017**

### ***To Attend and Participate on Your Computer:***

**<https://scag.zoom.us/j/116153109>**

### ***To Attend and Participate by Phone:***

**Call-in Number: 1-669-900-6833  
Meeting ID: 116 153 109**

#### ***PUBLIC ADVISORY***

If members of the public wish to review the attachments or have any questions on any of the agenda items, please contact Maggie Aguilar at (213) 630-1420 or via email at [aguilarm@scag.ca.gov](mailto:aguilarm@scag.ca.gov). Agendas & Minutes are also available at: [www.scag.ca.gov/committees](http://www.scag.ca.gov/committees).

SCAG, in accordance with the Americans with Disabilities Act (ADA), will accommodate persons who require a modification of accommodation in order to participate in this meeting. SCAG is also committed to helping people with limited proficiency in the English language access the agency's essential public information and services. You can request such assistance by calling (213) 630-1420. We request at least 72 hours (three days) notice to provide reasonable accommodations and will make every effort to arrange for assistance as soon as possible.



## Instructions for Attending the Meeting

SCAG is providing multiple options to attend the meeting:

**To Attend In-Person and Provide Verbal Comments:** Go to the SCAG Main Office located at 900 Wilshire Blvd., Ste. 1700, Los Angeles, CA 90017. The meeting will take place in the Policy B Meeting Room on the 17<sup>th</sup> floor starting at 9:30 a.m.

### To Attend on Your Computer

1. Click the following link: <https://scag.zoom.us/j/116153109>
2. If Zoom is not already installed on your computer, click “Download & Run Zoom” on the launch page and press “Run” when prompted by your browser. If Zoom has previously been installed on your computer, please allow a few moments for the application to launch automatically.
3. Select “Join Audio via Computer.”
4. The virtual conference room will open. If you receive a message reading, “Please wait for the host to start this meeting,” simply remain in the room until the meeting begins.

### To Attend by Phone

1. Call **(669) 900-6833** to access the conference room. Given high call volumes recently experienced by Zoom, please continue dialing until you connect successfully.
2. Enter the **Meeting ID: 116 153 109**, followed by #.
3. Indicate that you are a participant by pressing # to continue.
4. You will hear audio of the meeting in progress. Remain on the line if the meeting has not yet started.

---

#### OUR MISSION

*To foster innovative regional solutions that improve the lives of Southern Californians through inclusive collaboration, visionary planning, regional advocacy, information sharing, and promoting best practices.*

#### OUR VISION

*Southern California’s Catalyst for a Brighter Future*

#### OUR CORE VALUES

*Be Open | Lead by Example | Make an Impact | Be Courageous*



## Instructions for Participating and Public Comments

*You may participate and submit public comments in three (3) ways:*

1. **In Writing:** Submit written comments via email to: [CEHDPublicComment@scag.ca.gov](mailto:CEHDPublicComment@scag.ca.gov) by 5pm on Wednesday, April 5, 2023 You are not required to submit public comments in writing or in advance of the meeting; this option is offered as a convenience should you desire not to provide comments in real time as described below. All written comments received after 5pm on Wednesday, April 5, 2023 will be announced and included as part of the official record of the meeting.
2. **Remotely:** If participating in real time via Zoom or phone, during the Public Comment Period (Matters Not on the Agenda) or at the time the item on the agenda for which you wish to speak is called, use the “raise hand” function on your computer or \*9 by phone and wait for SCAG staff to announce your name/phone number. Limit oral comments to 3 minutes, or as otherwise directed by the presiding officer.
3. **In-Person:** If participating in-person, you are invited but not required, to fill out and present a Public Comment Card to the Clerk of the Board or other SCAG staff prior to speaking. It is helpful to indicate whether you wish to speak during the Public Comment Period (Matters Not on the Agenda) and/or on an item listed on the agenda. Limit oral comments to 3 minutes, or as otherwise directed by the presiding officer.

For purpose of providing public comment for items listed on the Consent Calendar, please indicate that you wish to speak when the Consent Calendar is called; items listed on the Consent Calendar will be acted on with one motion and there will be no separate discussion of these items unless a member of the legislative body so requests, in which event, the item will be considered separately.

***In accordance with SCAG’s Regional Council Policy, Article VI, Section H and California Government Code Section 54957.9, if a SCAG meeting is “willfully interrupted” and the “orderly conduct of the meeting” becomes unfeasible, the presiding officer or the Chair of the legislative body may order the removal of the individuals who are disrupting the meeting.***

---

### OUR MISSION

To foster innovative regional solutions that improve the lives of Southern Californians through inclusive collaboration, visionary planning, regional advocacy, information sharing, and promoting best practices.

### OUR VISION

Southern California’s Catalyst for a Brighter Future

### OUR CORE VALUES

Be Open | Lead by Example | Make an Impact | Be Courageous



## COMMUNITY, ECONOMIC AND HUMAN DEVELOPMENT COMMITTEE AGENDA

### TELECONFERENCE AVAILABLE AT THESE ADDITIONAL LOCATIONS

<p><b>Adele Andrade-Stadler</b> 2956 West Shorb Street Alhambra, CA 91803</p>	<p><b>Wendy Bucknum</b> Mission Viejo – City Hall 200 Civic Center Mission Viejo, CA 92691</p>	<p><b>Letitia Clark</b> 28000 Marguerite Parkway HS Building, Suite 333 Mission Viejo, CA 92662</p>
<p><b>Steve De Ruse</b> 18400 Grayland Avenue Artesia, CA 90701</p>	<p><b>Debra Dorst-Porada</b> Ontario - City Hall 303 East B Street Conference Room 2 Ontario, CA 91764</p>	<p><b>Lucy Dunn</b> 2 Park Plaza, Suite 100 Irvine, CA 92614</p>
<p><b>Rose Espinoza</b> La Habra - City Hall 110 East La Habra Boulevard La Habra, CA 90631</p>	<p><b>Fermon Waymond</b> 82566 Cray Mill Drive Indio, CA 92203</p>	<p><b>Mark E. Henderson</b> South Bay Cities Council of Governments 2355 Crenshaw Blvd, Suite 125, Torrance, CA 90501</p>
<p><b>Kathleen Kelly</b> Palm Desert - City Hall 73-510 Fred Waring Drive Council Chamber Conference Room Palm Desert, CA 92260</p>	<p><b>Tammy Kim</b> Irvine - City Hall 1 Civic Center Plaza Irvine CA, 92614</p>	<p><b>Lauren Kleiman</b> Newport Beach - City Hall 100 Civic Center Drive, Bay 2E Newport Beach, CA 92660</p>
<p><b>Matt LaVere</b> City of Ventura - Hall of Justice 800 South Victoria Avenue, 4th Floor Ventura, CA 93009</p>	<p><b>Annie Marshall</b> Avalon - City Hall 410 Avalon Canyon Road Avalon, CA 90704</p>	<p><b>Casey McKeon</b> 23421 South Pointe Drive, Suite 270 Laguna Hills, CA 92653</p>
<p><b>Bill Miranda</b> Santa Clarita - City Hall 23920 Valencia Boulevard First Floor, Mural Room Santa Clarita, CA 91355</p>	<p><b>John Mirisch</b> Beverly Hills - City Hall 455 North Rexford Drive, 4th Floor Beverly Hills, CA 90210</p>	<p><b>George Nava</b> Brawley - City Hall 383 Main Street Brawley, CA 92227</p>
<p><b>Marisela Nava</b> Perris - City Hall 101 North D Street Mayor and City Council Conference Room Perris, CA 92571</p>	<p><b>Ariel Pe</b> Lakewood – City Hall Lakewood City Council Chambers/Offices 5000 Clark Avenue Lakewood, CA 90712</p>	<p><b>Misty Perez</b> 960 Westlake Boulevard, Suite 202 Westlake Village, CA 91361</p>



## EXECUTIVE/ADMINISTRATION COMMITTEE MEETING AGENDA

<p><b>Nick Schultz</b> Burbank - City Hall 275 E Olive Avenue Burbank, CA 91502</p>	<p><b>David J. Shapiro</b> Calabasas - City Hall 100 Civic Center Way Calabasas, CA 91302</p>	<p><b>Becky A. Shevlin</b> Monrovia - City Hall 415 South Ivy Avenue Monrovia, CA 91016</p>
<p><b>Acquanetta Warren</b> Fontana - City Hall 8353 Sierra Avenue Executive Conference Room Fontana, CA 92335</p>	<p><b>Tony Wu</b> 4509 Temple City Boulevard Temple City, CA 91780</p>	<p><b>Frank Zerunyan</b> USC Price 650 Childs Way, RGL 200 Los Angeles, CA 90089</p>



**CEHD - Community, Economic and Human Development Committee**  
**Members – April 2023**

1. **Hon. Frank A. Yokoyama**  
CEHD Chair, Cerritos, RC District 23
2. **Hon. David J. Shapiro**  
CEHD Vice Chair, Calabasas, RC District 44
3. **Hon. Ashleigh Aitken**  
Anaheim, RC District 19
4. **Hon. Adele Andrade-Stadler**  
Alhambra, RC District 34
5. **Hon. Al Austin**  
Long Beach, GCCOG
6. **Hon. Wendy Bucknum**  
Mission Viejo, RC District 13
7. **Hon. Gary Boyer**  
Glendora, RC District 33
8. **Hon. Drew Boyles**  
El Segundo, RC District 40
9. **Hon. Don Caskey**  
Laguna Hills, OCCOG
10. **Hon. Ramon Castro**  
Imperial County CoC
11. **Hon. Letitia Clark**  
Tustin, RC District 17
12. **Hon. Steve DeRuse**  
La Mirada, RC District 31
13. **Hon. Debra Dorst-Porada**  
Ontario, Pres. Appt. (Member at Large)
14. **Ms. Lucy Dunn**  
Business Representative, Non-Voting Member
15. **Hon. Keith Eich**  
La Cañada Flintridge, RC District 36

---

**OUR MISSION**

*To foster innovative regional solutions that improve the lives of Southern Californians through inclusive collaboration, visionary planning, regional advocacy, information sharing, and promoting best practices.*

**OUR VISION**

*Southern California's Catalyst for a Brighter Future*

**OUR CORE VALUES**

*Be Open | Lead by Example | Make an Impact | Be Courageous*



## COMMUNITY, ECONOMIC AND HUMAN DEVELOPMENT COMMITTEE AGENDA

---

- 16. Hon. Bob Engler**  
Thousand Oaks, VCOG
- 17. Hon. Rose Espinoza**  
La Habra, OCCOG
- 18. Hon. Waymond Fermon**  
Indio, CVAG
- 19. Hon. Margaret Finlay**  
Duarte, RC District 35
- 20. Hon. Claudia Frometa**  
Downey, RC District 25
- 21. Hon. Mark Henderson**  
Gardena, RC District 28
- 22. Hon. Cecilia Hupp**  
Brea, OCCOG
- 23. Hon. Lynda Johnson**  
Cerritos, GCCOG
- 24. Hon. Kathleen Kelly**  
Palm Desert, RC District 2
- 25. Hon. Tammy Kim**  
Irvine, RC District 14
- 26. Hon. Lauren Kleiman**  
Newport Beach, RC District 15
- 27. Sup. Matt LaVere**  
Ventura County CoC
- 28. Hon. Jed Leano**  
Claremont, SGVCOG
- 29. Hon. Anni Marshall**  
Avalon, GCCOG
- 30. Hon. Andrew Masiel**  
Tribal Govt Regl Planning Board Representative
- 31. Hon. Casey McKeon**  
Huntington Beach, RC District 64

---

### OUR MISSION

*To foster innovative regional solutions that improve the lives of Southern Californians through inclusive collaboration, visionary planning, regional advocacy, information sharing, and promoting best practices.*

### OUR VISION

*Southern California's Catalyst for a Brighter Future*

### OUR CORE VALUES

*Be Open | Lead by Example | Make an Impact | Be Courageous*



## COMMUNITY, ECONOMIC AND HUMAN DEVELOPMENT COMMITTEE AGENDA

---

- 32. Hon. Bill Miranda**  
Santa Clarita, SFVCOG
- 33. Hon. John Mirisch**  
Beverly Hills, Pres. Appt. (Member at Large)
- 34. Hon. Joseph Morabito**  
Wildomar, WRCOG
- 35. George Nava**  
Brawley, ICTC
- 36. Hon. Marisela Nava**  
Perris, RC District 69
- 37. Hon. Ariel Pe**  
Lakewood, GCCOG
- 38. Hon. Misty Perez**  
Port Hueneme, Pres. Appt. (Member at Large)
- 39. Hon. Sandy Rains**  
Laguna Niguel, RC District 12
- 40. Hon. Nithya Raman**  
Los Angeles, RC District 51
- 41. Hon. Gabriel Reyes**  
San Bernardino County CoC
- 42. Hon. Rocky Rhodes**  
Simi Valley, RC District 46
- 43. Hon. Rex Richardson**  
Long Beach, RC District 29
- 44. Hon. Sylvia Robles**  
Grand Terrace, SBCTA
- 45. Hon. Sonny Santa Ines**  
Bellflower, GCCOG
- 46. Hon. Nicholas Schultz**  
Burbank, AVCJPA
- 47. Hon. Becky Shevlin**  
Monrovia, SGVCOG

---

### OUR MISSION

*To foster innovative regional solutions that improve the lives of Southern Californians through inclusive collaboration, visionary planning, regional advocacy, information sharing, and promoting best practices.*

### OUR VISION

*Southern California's Catalyst for a Brighter Future*

### OUR CORE VALUES

*Be Open | Lead by Example | Make an Impact | Be Courageous*





## COMMUNITY, ECONOMIC AND HUMAN DEVELOPMENT COMMITTEE AGENDA

---

- 48. Hon. Helen Tran**  
San Bernardino, SBCTA
  
- 49. Hon. Mark Waronek**  
Lomita, SBCCOG
  
- 50. Hon. Acquanetta Warren**  
Fontana, SBCTA
  
- 51. Hon. Tony Wu**  
West Covina, SGVCOG
  
- 52. Hon. Frank Zerunyan**  
Rolling Hills Estates, SBCCOG

---

### **OUR MISSION**

*To foster innovative regional solutions that improve the lives of Southern Californians through inclusive collaboration, visionary planning, regional advocacy, information sharing, and promoting best practices.*

### **OUR VISION**

*Southern California's Catalyst for a Brighter Future*

### **OUR CORE VALUES**

*Be Open | Lead by Example | Make an Impact | Be Courageous*



## COMMUNITY, ECONOMIC AND HUMAN DEVELOPMENT COMMITTEE AGENDA

Southern California Association of Governments  
900 Wilshire Boulevard, Suite 1700 - Policy B Meeting Room  
Los Angeles, CA 90017  
**Thursday, April 6, 2023**  
**9:30 AM**

The Community, Economic and Human Development Committee may consider and act upon any of the items on the agenda regardless of whether they are listed as Information or Action items.

### **CALL TO ORDER AND PLEDGE OF ALLEGIANCE** *(The Honorable Frank Yokoyama, Chair)*

### **GENERAL INFORMATION FOR PUBLIC COMMENTS**

Members of the public can participate in the meeting via written or verbal comments. Written comments can be emailed to: [CEHDPublicComment@scag.ca.gov](mailto:CEHDPublicComment@scag.ca.gov). Written comments received by 5pm on Wednesday, April 5, 2023 will be transmitted to members of the legislative body and posted on SCAG's website prior to the meeting. Written comments received after will be announced and included as part of the official record of the meeting. Any writings or documents provided to a majority of this committee regarding any item on this agenda (other than writings legally exempt from public disclosure) are available at the Office of the Clerk, at 900 Wilshire Blvd., Suite 1700, Los Angeles, CA 90017 or by phone at (213) 630-1420, or email to [aguilarm@scag.ca.gov](mailto:aguilarm@scag.ca.gov).

Verbal comments can be presented in real time during the meeting. Members of the public are allowed a total of 3 minutes for verbal comments. The presiding officer retains discretion to adjust time limits as necessary to ensure efficient and orderly conduct of the meeting, including equally reducing the time of all comments.

For members of the public participating in-person, Public Comment Cards are available. For members of the public attending remotely, please wait for the presiding officer to call the item and then indicate your interest in offering public comment by using the "raise hand" function on your computer or pressing \*9 on your telephone.

For items listed on the Consent Calendar, please indicate that you wish to speak when the Consent Calendar is called. Items listed on the Consent Calendar will be acted upon with one motion and there will be no separate discussion of these items unless a member of the committee so requests, in which event, the item will be considered separately.

### **PUBLIC COMMENT PERIOD (Matters Not on the Agenda)**

This is the time for public comments on any matter of interest within SCAG's jurisdiction that is *not* listed on the agenda. For items listed on the agenda, public comments will be received when that item is considered. Although the committee may briefly respond to statements or questions, under state law, matters presented under this item cannot be discussed or acted upon at this time.



## REVIEW AND PRIORITIZE AGENDA ITEMS

### ELECTION OF CHAIR AND VICE CHAIR

### CONSENT CALENDAR

#### Approval Items

1. Minutes of the Meeting – February 2, 2023 PPG. 9

#### Receive and File

2. CEHD Committee Outlook and Future Agenda Items PPG. 17
3. Connect SoCal 2024 Program Environmental Impact Report (State Clearinghouse No.: 2022100337): Status Update on Stakeholder Outreach and Highlights of Preliminary Approaches to Major Components PPG. 23
4. Connect SoCal 2024: Locally-Reviewed Growth Forecast Demographic and Economic Evaluation PPG. 42
5. Connect SoCal 2024: Equity Analysis Update - Priority Equity Communities PPG. 52

### INFORMATION ITEMS

6. Connect SoCal: 15-Minute Communities 40 Mins. PPG. 66  
*(Grieg Asher, Planning Supervisor, SCAG; Lindsay Sturman, Livable Communities Initiative; Wally Siembab, South Bay Cities COG; Christopher Pountney, ARUP)*
7. Economic Update: Job Quality Index 20 Mins. PPG. 104  
*(Gigi Moreno, Senior Economist, SCAG)*
8. RHNA Reform Update 20 Mins. PPG. 120  
*(Ma'Ayn Johnson, Planning Supervisor, SCAG)*

### CHAIR'S REPORT

*(The Honorable Frank Yokoyama, Chair)*

### STAFF REPORT

*(Jonathan Hughes, Government Affairs Officer, SCAG Staff)*

### ANNOUNCEMENTS

### ADJOURNMENT



**MINUTES OF THE REGULAR MEETING  
COMMUNITY, ECONOMIC AND HUMAN DEVELOPMENT COMMITTEE (CEHD)  
THURSDAY, FEBRUARY 2, 2023**

THE FOLLOWING MINUTES ARE A SUMMARY OF ACTIONS TAKEN BY THE COMMUNITY, ECONOMIC AND HUMAN DEVELOPMENT COMMITTEE (CEHD). A VIDEO AND AUDIO RECORDING OF THE FULL MEETING IS AVAILABLE AT: <http://scag.iqm2.com/Citizens/>.

The Community, Human and Development Committee (CEHD) of the Southern California Association of Governments (SCAG) held its regular meeting both in person and virtually (telephonically and electronically), given the declared state of emergency (pursuant to State of Emergency Proclamation dated March 4, 2020) and local public health directives imposing and recommending social distancing measures due to the threat of COVID-19, and pursuant to Government Code Section 54953(e)(1)(A). A quorum was present.

**Members Present:**

<b>Hon. Frank Yokoyama, Chair</b>	<b><i>Cerritos</i></b>	<b>District 23</b>
<b>Hon. David Shapiro, Vice Chair</b>	<b><i>Calabasas</i></b>	<b>District 44</b>
Hon. Ashleigh Aitken	<i>Anaheim</i>	District 19
Hon. Adele Andrade-Stadler	<i>Alhambra</i>	District 34
Hon. Gary Boyer	<i>Glendora</i>	District 33
Hon. Drew Boyles	<i>El Segundo</i>	District 40
Hon. Wendy Bucknum	<i>Mission Viejo</i>	District 13
Hon. Letitia Clark	<i>Tustin</i>	District 17
Hon. Steve De Ruse	<i>La Mirada</i>	GCCOG
Hon. Debra Dorst-Porada	<i>Ontario, Pres. Appt.</i>	Member at Large
Ms. Lucy Dunn		Ex-Officio
Hon. Keith Eich	<i>La Cañada Flintridge</i>	District 36
Hon. Margaret E. Finlay	<i>Duarte</i>	District 35
Hon. Mark Henderson	<i>Gardena</i>	District 28
Hon. Cecilia Hupp	<i>Brea</i>	OCCOG
Hon. Kathleen Kelly	<i>Palm Desert</i>	District 2
Hon. Tammy Kim	<i>Irvine</i>	District 14
Hon. Lauren Kleiman	<i>Newport Beach</i>	District 15
Sup. Matt LaVere	<i>Ventura County</i>	CoC
Hon. Patricia Lock Dawson	<i>Riverside</i>	District 68



Hon. Anni Marshall	<i>Avalon</i>	GCCOG
Hon. Andrew Masiel, Sr.	<i>Tribal Gov't Reg'l Planning</i>	
Hon. Lauren Meister	<i>West Hollywood</i>	WCCOG
Hon. Bill Miranda	<i>Santa Clarita</i>	SFVCOG
Hon. John Mirisch	<i>Beverly Hills, Pres. Appt.</i>	Member at Large
Hon. Joseph Morabito	<i>Wildomar</i>	WRCOG
Hon. Marisela Nava	<i>Perris</i>	District 69
Hon. Sandy Rains	<i>Laguna Niguel</i>	District 12
Hon. Rocky Rhodes	<i>Simi Valley</i>	District 46
Hon. Sylvia Robles	<i>Grand Terrace</i>	SBCTA
Hon. Sonny Santa Ines	<i>Bellflower</i>	GCCOG
Hon. Nicholas Schultz	<i>Burbank</i>	AVCJPA
Hon. Becky Shevlin	<i>Monrovia</i>	SGVCOG
Hon. Andy Sobel	<i>Santa Paula</i>	VCOG
Hon. Helen Tran	<i>San Bernardino</i>	SBCTA
Hon. Mark Waronek	<i>Lomita</i>	SBCCOG
Hon. Acquanetta Warren	<i>Fontana</i>	SBCTA

**Members Not Present**

Hon. Al Austin, II	<i>Long Beach</i>	GCCOG
Hon. Don Caskey	<i>Laguna Hills</i>	OCCOG
Hon. Ramon Castro	<i>Imperial County</i>	CoC
Hon. Rose Espinoza	<i>La Habra</i>	OCCOG
Hon. Waymond Fermon	<i>Indio</i>	CVAG
Hon. Jed Leano	<i>Claremont</i>	SGVCOG
Hon. Casey McKeon	<i>Huntington Beach</i>	District 64
Hon. George A. Nava	<i>Brawley</i>	ICTC
Hon. Kim Nguyen	<i>Garden Grove</i>	District 18
Hon. Ariel Pe	<i>Lakewood</i>	GCCOG
Hon. Misty Perez	<i>Port Hueneme, Pres. Appt.</i>	Member at Large
Hon. Nithya Raman	<i>Los Angeles</i>	District 51
Hon. Gabriel Reyes	<i>San Bernardino County</i>	CoC
Hon. Rex Richardson	<i>Long Beach</i>	District 29
Hon. Benjamin Vasquez	<i>Santa Ana</i>	District 16
Hon. Tony Wu	<i>West Covina</i>	SGVCOG
Hon. Frank Zerunyan	<i>Rolling Hills Estates</i>	SBCCOG

---

## CALL TO ORDER AND PLEDGE OF ALLEGIANCE

The Honorable Frank Yokoyama called the meeting to order at 9:34 a.m. and asked Councilmember Marisela Nava, Perris, District 69, to lead the Pledge of Allegiance.

## PUBLIC COMMENT PERIOD

Chair Yokoyama provided detailed instructions and general information on how to provide public comments. Additionally, he noted that public comments received via email to [CEHDPublicComment@scag.ca.gov](mailto:CEHDPublicComment@scag.ca.gov) after 5pm on Wednesday, February 1, 2023, would be announced and included as part of the official record of the meeting.

Chair Yokoyama opened the public comment period and noted this was the time for members of the public to offer comment for matters that are within SCAG's jurisdiction but are not listed on the agenda.

SCAG staff noted there were no written public comments received via email before or after the 5pm deadline on Wednesday, February 1, 2023. SCAG staff also noted that there were no public comments for matters not listed on the agenda.

Chair Yokoyama closed the public comment period for matters not listed on the agenda.

## REVIEW AND PRIORITIZE AGENDA ITEMS

There were no requests to prioritize agenda items.

## CONSENT CALENDAR

### Approval Items

1. Minutes of the January 5, 2023 Meeting

### Receive and File

2. CEHD Committee Outlook and Future Agenda Items
3. Status Update on Air Quality Planning and Transportation Conformity Challenges in SCAG Region
4. Connect SoCal 2024: Draft SCS Technical Methodology

A MOTION was made (Finlay) and SECONDED (Bucknum) to approve the Consent Calendar Item 1 and Receive and File Items 2 through 4. Motion was passed by the following roll call vote:

**AYES:** Aitken, Andrade-Stadler, Boyer, Boyles Bucknum, Clark, De Ruse, Eich, Finlay, Henderson, Hupp, Kelly, Kim, Kleiman, LaVere, Lock Dawson, Marshall, Masiel Sr., Meister, Miranda, Mirisch, Morabito, M. Nava, Rains, Robles, Santa Ines, Schultz, Shapiro, Shevlin, Sobel, Warren and Yokoyama (32)

**NOES:** (0)

**ABSTAIN:** Tran - Consent Calendar (1); Bucknum - Item 1 (1)

There were no public comments on this item.

### **ACTION ITEMS**

#### 5. REAP 2021: Programs to Accelerate Transformative Housing (PATH) Program Funding Application

Chair Yokoyama made opening comments and provided background information of the REAP 2021 Programs to Accelerate Transformative Housing (PATH) program funding application. He asked Jacob Noonan, SCAG staff, to provide an overview of PATH program application and framework.

Mr. Noonan's presentation included a brief overview of the PATH Program Funding Application template. Presentation highlights included the following:

- SCAG REAP 2.0 Program Framework - Overview
- Summary of three (3) PATH Program Funding Areas
- PATH Application Checklist and Evaluation Criteria
- Calls for Applications and Anticipated Timelines
- Next Steps and Program Milestones

Mr. Noonan asked the CEHD to consider recommending that the Regional Council approve the REAP 2.0 PATH Program application template, including the application requirements, scoring methodology, and selection process; authorize staff to release the calls for applications upon approval of SCAG's full Regional Early Action Planning Grant (REAP 2.0) application by the State Partners; and authorize the SCAG Executive Director or his designee to revise the application as needed for compliance with the REAP 2.0 program and/or feedback from the State Partners and to enter into agreements with awarded entities under the programs and execute all documents incident to the agreements, including issuance of conditional award letters.

SCAG staff responded to comments and questions expressed by the Councilmembers, including a request for a separate discussion or future agenda item that focuses on broader initiatives and goals of remote work for the region.

A MOTION was made (Masiel, Sr.) and SECONDED (Finlay) to approve staff's recommendation. Motion passed by the following roll call vote:

**AYES:** Aitken, Andrade-Stadler, Boyer, Boyles Bucknum, Clark, Eich, Finlay, Henderson, Hupp, Kelly, Kim, Kleiman, LaVere, Lock Dawson, Marshall, Masiel Sr., Meister, Miranda, Mirisch, Morabito, M. Nava, Rains, Robles, Santa Ines, Shapiro, Shevlin, Sobel, Tran, Warren and Yokoyama (31)

**NOES:** (0)

**ABSTAIN:** (0)

The comprehensive staff report, Draft PATH Application, and REAP 2021 (PATH) PowerPoint presentation were included in the agenda packet.

There were no public comments on this item.

#### **INFORMATION ITEMS**

##### 6. Housing Policy Leadership Academy Participant Panel on Surplus and Underutilized Lands

Chair Yokoyama provided brief comments on one of SCAG's housing programs, the Housing Policy Leadership Academy, also known as HPLA. He asked Alisha James, SCAG staff, to moderate the discussion of the HPLA Program and provide an overview and introduction of the panel participants.

Ms. James provided background information of the SCAG developed HPLA program which aimed to educate and elevate local leadership to proactively contribute to accelerate housing production, implement housing elements, and collaborate with SCAG's emerging housing program.

Ms. James noted that staff invited a panel of participants to present the policy recommendations they developed as part of the final project in the HPLA program. She introduced three groups led by Dr. Anthony Manousos, Making Housing and Community Happen (MHCH); Sonya Gray-Horn, Congregations Organized for Prophetic Engagement (COPE); and Leticia Ramirez, Cesar Chavez Foundation.

The panelist presentations focused on HPLA policy proposals that align with land use and growth strategies being explored for inclusion in the upcoming Connect So Cal 2024. The proposals focused on encouraging housing production on surplus and underutilized land and promoting more housing and jobs closer to each other and to transit. Presentation highlights included some of the following policy proposals:



- Proposal to rezone institutional land in Pasadena so that nonprofit hospitals, schools and other institutions can have affordable housing built on underutilized property by-right.
- Proposal to convert underutilized or vacant non-residential land uses in San Bernardino to residential use.
- Proposal for the County of Los Angeles to designate two underutilized parking lots used by the San Fernando Courthouse as surplus land and develops affordable and market-rate housing.

SCAG staff responded to comments and questions expressed by the Councilmembers including discussions concerning city tax structures, loss of general fund revenue, lack of state services and financial incentives. Some additional discussions focused on affordable housing costs, and inclusionary housing and development fees.

There were no public comments on this item.

The comprehensive staff report and PowerPoint presentation, including the speaker bio list, were included in the agenda packet.

#### 7. Connect SoCal: 15-Minute Communities

Chair Yokoyama stated that due to time constraints, the Connect SoCal: 15 Minute Communities presentation would be deferred to the next CEHD Committee meeting.

There were no public comments on this item.

#### **CHAIR'S REPORT**

Chair Yokoyama welcomed and recognized Councilmembers Ashleigh Aitken, City of Anaheim; Wendy Bucknum, Mission Viejo; Don Caskey, City of Laguna Hills; Lauren Kleiman, City of Newport Beach; Casey McKeon, City of Huntington Beach; Joseph Morabito, City of Wildomar; Sandy Rains, City of Laguna Niguel; Sylvia Robles, City of Grand Terrace; Rocky Rhodes, City of Simi Valley; Helen Tran, City of San Bernardino; and Benjamin Vasquez, City of Santa Ana, to the CEHD Committee.

Chair Yokoyama provided a brief overview of the Chair's Report which included highlights of the following topics of the upcoming elections for the Chair/Vice Chair; the Joint Policy Committee meeting scheduled for March 2, 2023 at 9:30 a.m., which would focus on the Connect SoCal 2024 Subcommittee recommendations; and the 2023 SCAG Scholarship Program.



Chair Yokoyama reminded everyone that SCAG was working closely with subregional organizations (COGs) to fill vacancies on the Regional Council and Policy Committees.

Chair Yokoyama reminded everyone that in lieu of the March CEHD Committee meeting, the Joint Policy Committee meeting would be held on Thursday, March 2, 2023 at 9:30 a.m. He encouraged the CEHD members to attend.

**STAFF REPORT**

Jonathan Hughes, Sr. Government Affairs Officer, provided a brief report that included information on future remote meeting participation, elections, and SCAG co-sponsored events.

**FUTURE AGENDA ITEMS**

There was a request for meeting topics that focus on broader initiatives and goals of remote work for the region and discussion on developing anti-speculation policies in the housing market.

**ANNOUNCEMENTS**

The CEHD Committee members acknowledged and extended congratulations to Jenna Hornstock on her new position at the City of Los Angeles, Mayor’s Office.

Chair Yokoyama thanked Ms. Hornstock for her dedication, service and valuable contributions to the agency and asked if she would say a few words.

**ADJOURNMENT**

There being no further business, Chair Yokoyama adjourned the Community, Economic and Human Development Committee meeting at 11:43 a.m.

Respectfully submitted by:  
Carmen Summers  
Community, Economic and Human Development Committee Clerk

[MINUTES ARE UNOFFICIAL UNTIL APPROVED BY THE CEHD COMMITTEE]

//

**COMMUNITY, ECONOMIC AND HUMAN DEVELOPMENT COMMITTEE ATTENDANCE REPORT**

2022-23

MEMBERS	Representing	2022-23												Total Mtgs Attended To Date	
		Jun	Jul	Aug	Sep	Oct	Nov	Dec	Jan	Feb	Mar JC	April	May		
Aitken, Ashleigh	Anaheim, District 19									1	1				2
Andrade-Stadler, Adele	Alhambra, District 34	1	1		1	1					1				5
Austin, II, Al	Long Beach, GCCOG														
Boyer, Gary	Glendora, RC District 33			D	1	1	1	D	1	1					5
Boyles, Drew	El Segundo, District 40	1	1	A	1	1	1	A	1	1					7
Bucknum, Wendy	Mission Viejo, District 13	1	1		1	1	1				1				6
Caskey, Don	Laguna Hills, OCCOG														
Castro, Ramon	Imperial County, CoC			R				R							
Clark, Letitia	Tustin, District 17	1	1	K	1		1	K	1	1					6
De Ruse, Steve	La Mirada, District 31	1	1			1	1		1	1					6
Dorst-Porada, Debra	Ontario, Pres. Appt.					1	1		1	1					4
Dunn, Lucy	Ex-Officio, Business Representative								1	1					2
Eich, Keith	La Cañada Flintridge, RC District 36	1	1		1	1	1		1	1					7
Espinoza, Rose	La Habra, OCCOG								1						1
Fermon, Waymond	Indio, CVAG		1			1			1						3
Finlay, Margaret E.	Duarte, District 35		1		1		1		1	1					5
Henderson, Mark E.	Gardena, District 28	1	1			1	1		1	1					6
Hupp, Cecilia	Brea, OCCOG	1	1	D	1		1	D	1	1					6
Kelly, Kathleen	Palm Desert, District 2	1	1	A	1	1	1	A	1	1					7
Kim, Tammy	Irvine, RC District 14	1	1	R	1	1	1	R	1	1					7
Kleiman, Lauren	Newport Beach, District 15										1				1
LeVere, Matt	Ventura County, CoC	1	1	K	1	1	1	K	1	1					7
Leano, Jed	Claremont, SGVCOG	1	1				1								3
Lock Dawson, Patricia	Riverside, District 68		1		1	1	1		1	1					6
Marshall, Anni	Avalon, GCCOG	1	1		1	1			1	1					6
Masiel, Sr., Andrew	Pechanga Band of Luiseno Indians				1		1		1	1					4
McKeon, Casey	Huntington Beach, District 64								1						1
Meister, Lauren	West Hollywood, WCCOG	1	1		1	1	1		1	1					7
Miranda, Bill	Santa Clarita, SFVCOG	1	1		1		1		1	1					6
Mirisch, John	Beverly Hills, Pres. Appt.		1		1	1	1		1	1					6
Morabito, Joseph	Wildomar, WRCOG								1	1					2
Nava, George A.	ICTC					1									1
Nava, Marisela	Perris, District 69	1	1		1	1	1		1	1					7
Nguyen, Kim B.	Garden Grove, District 18	1	1			1									3
Pe, Ariel "Ari"	Lakewood, GCCOG	1	1		1										3
Perez, Misty	Port Hueneme, Pres. Appt.				1		1		1						3
Rains, Sandy	Laguna Niguel, District 12										1				1
Raman, Nithya	Los Angeles, District 51			D				D							
Reyes, Gabriel	San Bernardino County CoC			A				A							
Rhodes, Rocky	Simi Valley, District 46										1				1
Richardson, Rex	Long Beach, District 29			R				R							
Robles, Sylvia	Grand Terrace, SBCTA										1				1
Santa Ines, Sonny	Bellflower, GCCOG		1	K	1	1		K		1					4
Schultz, Nick	Burbank, AVCJPA	1	1			1	1		1	1					6
Shapiro, David J.	Calabasas, District 44	1	1		1	1	1		1	1					7
Shevlin, Becky A.	Monrovia, SGVCOG	1	1		1	1	1		1	1					7
Sobel, Andy	Santa Paula, VCOG	1			1	1			1	1					5
Tran, Helen	San Bernardino, SBCTA										1				1
Vazquez, Benjamin	Santa Ana, District 16														
Waronek, Mark	Lomita, SBCCOG				1	1	1		1	1					5
Warren, Acquanetta	Fontana, SBCTA		1		1	1	1		1	1					6
Wu, Tony	West Covina, SGVCOG	1	1												2
Yokoyama, Frank Aurelio	Cerritos, District 23	1	1		1	1	1		1	1					7
Zerunyan, Frank	Rolling Hills Estates, SBCCOG	1				1	1		1						4
<b>TOTAL ATTENDANCE</b>		<b>25</b>	<b>29</b>		<b>27</b>	<b>28</b>	<b>28</b>		<b>34</b>	<b>37</b>					

Attachment: CEHD Attendance Sheet FY 2022-23 (Minutes of the February 2, 2023 Meeting)



AGENDA ITEM 2  
REPORT

Southern California Association of Governments  
April 6, 2023

To: Community Economic & Human Development Committee (CEHD)

EXECUTIVE DIRECTOR'S  
APPROVAL

From: Elizabeth Carvajal, Deputy Director  
(213) 236-1801, carvajal@scag.ca.gov

Subject: CEHD Committee Outlook and Future Agenda Items

**RECOMMENDED ACTION:**

Receive and File

**STRATEGIC PLAN:**

This item supports the following Strategic Plan Goal 1: Produce innovative solutions that improve the quality of life for Southern Californians.

**EXECUTIVE SUMMARY:**

*The draft Policy Development Framework (“Framework”) for Connect SoCal 2024 was presented to the Community, Economic and Human Development Committee (CEHD) on April 7, 2022. Following the Regional Council adoption of the Framework on June 2, 2022, staff developed a 12-month look ahead for the CEHD, to realize the goals and discussions committed to in the Framework and develop consensus around the policy priorities that will become final recommendations in Connect SoCal 2024. The look-ahead was also provided to the Executive Administration Committee (EAC) at the 2022 EAC Retreat. The attached revised look ahead for the CEHD provides updated information for the remainder of FY 2023. The look-ahead will be updated monthly as a receive and file item, reflecting agenda items covered and any modifications needed.*

**BACKGROUND:**

**What is Connect SoCal 2024?**

SCAG prepares a long-range RTP/SCS every four years which provides a vision for integrating land use and transportation for increased mobility and more sustainable growth.

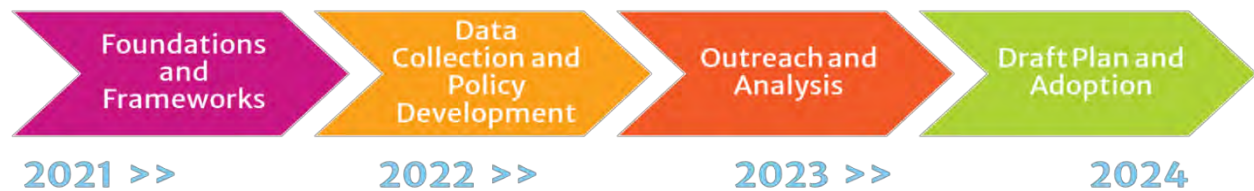
SCAG’s next RTP/SCS, Connect SoCal 2024, will incorporate important updates of fundamental data as well as enhanced strategies and investments based on, and intended to strengthen, the plan adopted by the SCAG Regional Council in 2020. The pillars of Connect SoCal—the *Core Vision* and *Key Connections*—are anticipated to continue into the next plan. The *Core Vision* centers on

maintaining and better managing the transportation network we have for moving people and goods, while expanding mobility choices by locating housing, jobs and transit closer together and increasing investment in transit and complete streets. The *Key Connections* augment the *Core Vision* of the plan to address trends and emerging challenges. These *Key Connections* lie at the intersection of land use, transportation and innovation to accelerate progress on regional planning goals. For this plan development cycle, SCAG staff will focus on process improvements and data updates and refinements. However, in developing Connect SoCal, SCAG must continue to monitor and reexamine trends and emerging issues to put forth a plan that addresses the region’s evolving needs, challenges and opportunities. Thus, the plan will be augmented with consideration of emerging issues, to be discussed through three Policy Subcommittees in Fall and Winter 2022.

**Connect SoCal 2024: Status Update**

Throughout 2022, staff continued with research to better understand the trends and existing conditions in the region. This phase involved assessment of existing conditions and planning occurring at the local jurisdiction level through the Local Data Exchange process and engagement with County Transportation Commissions on the Project List. Over the course of the first half of 2023, SCAG staff will be seeking direction from our policy makers, through the relevant Policy Committees and three special Policy Subcommittees, on the priorities and strategies for Connect SoCal 2024 to augment and help better align plans and investments across the region.

Phases of Connect SoCal 2024 Development



**Policy Development Framework for Connect SoCal 2024**

In July 2021, the Executive Administration Committee convened for a strategic planning session. One action identified during that session was to create a Policy Development Framework for Connect SoCal 2024, in particular as a strategy to engage SCAG’s Policy Committees in the data, emerging issues and policy recommendations that will be presented in the plan. The draft Policy Development Framework (“Framework”) for Connect SoCal 2024 was presented to the Community Economic and Human Development Committee (CEHD) on April 7, 2022 and was adopted by the Regional Council at the June 2, 2022 meeting. In furtherance of the adopted Policy Development Framework, staff have developed “look aheads” for each of the three Policy committees (CEHD, TC and EEC) organized around three areas: Connect SoCal, Local Assistance Program and Regional Updates.

### **CEHD Committee Look Ahead and Framework**

Building on the Policy Framework and the commitment to creating more transparency and engagement in the policy development process, staff developed a 12-month look ahead for the Community, Economic and Housing Development (CEHD) Policy Committee to provide a framework and approach to the committee's agenda from July 2022 through July 2023, and to present an overview of future topics.

The framework organizes content into three programmatic areas:

- 1. *Connect SoCal:*** Items within this area will center on efforts to implement Connect SoCal 2020, updates on the plan development process for 2024, and discussion of key policy issues and emerging trends for the 2024 Sustainable Communities Strategy portion of Connect SoCal. Presentations will offer best practices, lessons learned and emerging trends in key policy areas centered on land use, housing and economic development. Throughout 2022, presentations will focus on current implementation efforts for Connect SoCal 2020 as well as status updates on the development of Connect SoCal 2024.

Through the Local Data Exchange process concluded in December 2022, staff conducted one on one meetings with most of the 197 cities and counties in the SCAG region and also asked cities and counties to complete a survey to identify opportunities, barriers and challenges to meeting the growth projections and GhG reduction targets in Connect SoCal. Based on the qualitative and quantitative inputs from local jurisdictions and the findings and recommendations from the Connect SoCal subcommittees, the Connect SoCal programmatic area of the CEHD agenda will focus on the exploration of strategies and policy solutions to address issues raised through those processes. These strategies and policy solutions will be developed with input from the CEHD committee and included as the land use strategies in Connect SoCal 2024.

- 2. *Local Assistance Program:*** In this programmatic area, staff will present informational and action items related to programs that provide assistance to local partners. Currently, the main programs that will be highlighted through the CEHD committee are: the in-progress \$47 million REAP (Regional Early Action Planning) Grant program and the development and implementation of REAP 2, with a focus on the Housing Supportive Infrastructure Program component.
- 3. *Regional Updates:*** This programmatic area will focus on regional policy issues, such as upcoming RHNA reform effort, Connect SoCal strategies such as Neighborhood Mobility Areas, implementation of the Inclusive Economic Recovery Strategy (IERS) through SCAG's one-time state funding, and the related coordination with the State's new Community

---

Economic Resiliency Fund (CERF) program. Committee members may also recommend other policy topics for exploration.

The look ahead is tracked to when the draft 2024 Connect SoCal will be published. Staff will ensure that the various policy and strategy recommendations in Connect SoCal 2024 will be reviewed and discussed by SCAG's policy committees through June 2023, as the draft plan will be seeking feedback through broader public participation channels beyond that date. This look ahead is a draft, and topics and panels may change based on speaker availability, progress on the targeted programs, and other requests from the Committee Chair and Vice Chair as well as members.

The updated 12-Month Look Ahead is included as Attachment 1, highlighting items covered to date, any modifications made, and new items for upcoming meetings through June 2023.

**FISCAL IMPACT:**

Work associated with this item is included in the FY 22-23 Overall Work Program (310.4874.01: Connect SoCal Development).

**ATTACHMENT(S):**

1. CEHD Lookahead

# CEHD Committee Agenda Outlook for FY 2023

Anticipated major actions and information items. Does not include all Receive/File and Program Updates.

Date	Connect SoCal	Local Assistance Program	Regional Update
July to Sept	<ul style="list-style-type: none"> <li>ü Draft Goals and Performance Measures</li> <li>ü Local Data Exchange (LDX) and Local Information Services Team (LIST) Status Update</li> </ul>	<ul style="list-style-type: none"> <li>ü REAP 1.0 Program Bi-Annual Status report</li> <li>ü REAP 2.0 Draft Subregional Partnership Guidelines</li> <li>ü REAP 2.0 Draft PATH Program</li> <li>ü Panel on HQTAs Projects</li> </ul>	<ul style="list-style-type: none"> <li>ü SCAG's Role in Economic Development</li> <li>ü CEHD 12-Month Lookahead</li> </ul>
Oct - Dec	<ul style="list-style-type: none"> <li>ü Final Performance Measures and Monitoring</li> <li>ü LDX and LIST Status Update</li> </ul>	<ul style="list-style-type: none"> <li>ü Call for Collaboration Panel</li> <li>ü REAP 2.0 – Adoption of PATH Program</li> <li>ü Vienna Social Housing Field Study – Summary Report</li> </ul>	<ul style="list-style-type: none"> <li>ü Neighborhood Mobility Areas</li> </ul>



# CEHD Committee Agenda Outlook for FY 2023

Anticipated major actions and information items. Does not include all Receive/File and Program Updates.

Date	Connect SoCal	Local Assistance Program	Regional Update
Jan	<ul style="list-style-type: none"> <li>• LDX Update – First Look at Results</li> <li>• Land Use Strategies Overview</li> </ul>	<ul style="list-style-type: none"> <li>• REAP 1.0 - Bi-Annual Progress Report</li> </ul>	
Feb	<ul style="list-style-type: none"> <li>• Land use Strategy Panels #2-3:                             <ul style="list-style-type: none"> <li>• 15 Minute Communities</li> </ul> </li> <li>• HPLA Presentations on Surplus and Underutilized Lands</li> </ul>	<ul style="list-style-type: none"> <li>• REAP 1.0 - HPLA Participants Panel</li> <li>• REAP 2.0 Program Development Progress Report                             <ul style="list-style-type: none"> <li>• Final Applications/Release NOFA and HIPP Pilot</li> </ul> </li> </ul>	
<ul style="list-style-type: none"> <li>• <u>Joint Policy Committee (No Regular Committees): Connect SoCal 2024 Subcommittee Recommendations</u></li> </ul>			
Apr	<ul style="list-style-type: none"> <li>• <del>Land Use Strategy Panel #3: Anti-displacement Strategies</del> (included in June Connect SoCal Policy Framework)</li> <li>• Land Use Strategy Panel #3                             <ul style="list-style-type: none"> <li>• 15-Minute Communities</li> </ul> </li> <li>• <del>Forecasted Regional Development Pattern – Update</del></li> </ul>		<ul style="list-style-type: none"> <li>• <del>Inclusive Economic Growth – Progress Update</del></li> <li>• <del>SoCal Economic Trends Tool</del></li> <li>• Economic Index Update: Job Quality Index</li> <li>• RHNA Reform</li> </ul>
June	<ul style="list-style-type: none"> <li>• <del>Land Use Strategy Panel #4-5</del> <ul style="list-style-type: none"> <li>• <del>Job Centers, Open Space, Mobility</del></li> <li>• <del>Financing Strategies</del> (included in June Connect SoCal Policy Framework)</li> </ul> </li> <li>• Forecasted Regional Development Pattern – Input Assessment and Recs</li> <li>• Connect SoCal Policy Framework</li> </ul>	<ul style="list-style-type: none"> <li>• <del>REAP 1.0 Panel on Financing Strategies</del> (also for land use strategies)</li> </ul>	<ul style="list-style-type: none"> <li>• Inclusive Economic Growth-Progress Report</li> <li>• Economic Update: Economic Trends Tool &amp; Roundtable</li> </ul>
July	<ul style="list-style-type: none"> <li>• Utility Investments to Support Housing</li> </ul>	<ul style="list-style-type: none"> <li>• <del>REAP 2.0: Final Application and Release</del></li> </ul>	<ul style="list-style-type: none"> <li>• <del>Inclusive Economic Growth</del></li> </ul>



AGENDA ITEM 3  
REPORT

Southern California Association of Governments  
April 6, 2023

**To:** Community Economic & Human Development Committee (CEHD)  
Energy & Environment Committee (EEC)  
Transportation Committee (TC)  
Regional Council (RC)

EXECUTIVE DIRECTOR'S  
APPROVAL

**From:** Karen Calderon, Senior Regional Planner  
(213) 236-1983, calderon@scag.ca.gov

**Subject:** Connect SoCal 2024 Program Environmental Impact Report (State Clearinghouse No.: 2022100337): Status Update on Stakeholder Outreach and Highlights of Preliminary Approaches to Major Components

**RECOMMENDED ACTION FOR EEC:**

Information Only – No Action Required

**RECOMMENDED ACTION FOR CEHD, TC, AND RC:**

Receive and File

**STRATEGIC PLAN:**

This item supports the following Strategic Plan Goal 2: Advance Southern California’s policy interests and planning priorities through regional, statewide, and national engagement and advocacy.

**EXECUTIVE SUMMARY:**

*At the February 2, 2023 meeting SCAG staff provided the EEC with a status update on the public comments received on the Notice of Preparation (NOP) of a Draft Program Environmental Impact Report (2024 Draft PEIR) for the proposed 2024-2050 Regional Transportation Plan/Sustainable Communities Strategy (RTP/SCS), referred to alternatively as “Connect SoCal 2024”, “Plan”, or “Project”. This report provides the EEC with a status update on stakeholder outreach efforts and highlights of preliminary approaches to major components to be included in the 2024 Draft PEIR. Further, this report provides a schedule of events relating to preparation of the PEIR. Staff plans to provide periodic updates on the progress of the PEIR development and to give EEC members ample opportunity to become familiar with the PEIR such that a recommendation for approval to release the 2024 Draft PEIR can be made to the Regional Council (RC) currently planned in Fall 2023.*

---

**Background:**

As required by federal and state law, SCAG prepares a long-range Regional Transportation Plan/Sustainable Communities Strategy (RTP/SCS) every four years which provides a vision for integrating land use and transportation for increased mobility and more sustainable development. SCAG's next RTP/SCS, Connect SoCal 2024, will incorporate important updates of fundamental data, enhanced strategies and investments based on, and intended to strengthen, the last plan adopted by the SCAG Regional Council in 2020.

California Environmental Quality Act (CEQA), codified at Public Resource Code (PRC) Section 21000 et seq., and its implementing regulations, CEQA Guidelines, found at California Code Regulations Title 14, Chapter 3, Section 15000 et seq., require SCAG as the Lead Agency to evaluate the potential environmental impacts for any discretionary governmental action and disclose the evaluation in a CEQA document that is appropriate for the proposed governmental action (CEQA Guidelines Section 15002(b)). As Lead Agency, SCAG found a PEIR is the appropriate type of EIR for the proposed Connect SoCal 2024.

The PEIR will serve as a first-tier, programmatic document and provides a region-wide assessment of potential environmental impacts of the proposed Connect SoCal 2024, including direct and indirect impacts, growth-inducing impacts, and cumulative impacts. The PEIR must also evaluate alternatives to the proposed Connect SoCal 2024 and propose feasible mitigation measures.

**Status Update on 2024 PEIR Stakeholder Outreach:**

The 2024 PEIR team (comprising SCAG staff and consultants) has complied with all applicable public and tribal outreach requirements, pursuant to CEQA and Assembly Bill (AB 52), for the 2024 Draft PEIR. As discussed below, largescale outreach efforts were conducted for the NOP and with tribal governments as appropriate for the large geographic and demographically diverse area.

In addition to the required outreach efforts, the PEIR team has—and will continue to—engage with stakeholders, including representatives of tribal governments, throughout the 2024 Draft PEIR development by providing periodic PEIR status updates and sharing the preliminary approaches to major components. Additional outreach efforts are beyond state requirements, and as such there are no guidelines for how to conduct these efforts. Considering SCAG's existing forums, Plan outreach initiatives, and past stakeholder outreach efforts from previous RTP/SCS PEIRs, the PEIR team developed an approach to additional stakeholder outreach that consists of two components: 1) leveraging existing stakeholder outreach forums, primarily SCAG's Technical Advisory Committees and Working Groups, and 2) targeted outreach of key stakeholders on topics specific to the PEIR. Stakeholder outreach efforts for 2024 Draft PEIR, to date, are presented in Table 1, below.

**1. Required Stakeholder Outreach Pursuant to CEQA and AB 52**

***NOP Public Outreach.*** On October 17, 2022, staff released the NOP of a Draft PEIR for a required

30-day public review and comment period ending on November 16, 2022. The NOP was distributed to over 5,000 stakeholders and members of the public. A summary of the NOP was translated into five languages and published in 12 newspapers across the SCAG region. As part of the scoping process, two virtual public NOP scoping meetings were conducted on November 9 and 10, 2022, respectively.

**Tribal Outreach.** On October 13, 2022, PEIR staff requested a list from the California Native American Heritage Commission (NAHC) of California Native American tribes that are traditionally and culturally affiliated with the geographic area of the Plan. SCAG staff initiated the tribal consultation process on October 27, 2022 by sending Tribal Consultation Initiation letters to all of SCAG's tribal contacts within the 15 days of the release of the NOP, as required by AB 52. Additional letters were sent on December 14, 2022 and December 20, 2022, upon receipt of the tribal contacts list from the NAHC. In total, staff contacted 64 tribal contacts and 54 tribes in the SCAG region. The AB 52 tribal outreach concluded on January 20, 2023 with no requests for consultation.

## 2. Additional Stakeholder Outreach

**Leveraging Existing Stakeholder Outreach Forums.** The PEIR team is leveraging SCAG's existing Technical Advisory Committees and Working Groups to advance the outreach efforts on the 2024 Draft PEIR. SCAG's Technical Advisory Committees and Working Groups function as a forum for SCAG staff to engage stakeholders in the development and implementation of plans and policies, including the Connect SoCal 2024 PEIR. Members and attendees of SCAG's Technical Advisory Committees and Working Groups include representatives from the business/development sector; the environmental sector; local jurisdictions; and the general public. To date, the PEIR team has provided six PEIR updates to four different Technical Advisory Committees and Working Groups. See Table 1, 2024 Draft PEIR Stakeholder Outreach, below for dates and topics covered. Staff will continue to update Table 1 as the 2024 Draft PEIR outreach efforts continue. To learn more or view past agendas and presentations, please visit SCAG's Technical Advisory Committees and Working Groups [webpage](#).

**Targeted Stakeholder Outreach.** The 2024 PEIR team is also conducting targeted outreach to key stakeholders by topics specific to the PEIR. For example, PEIR staff reached out to representatives of all five air districts in the SCAG region to discuss the preliminary approach to 2024 Draft PEIR's air quality and GHG sections. Two one-and-one meetings were coordinated with CEQA staff from the South Coast Air Quality Management District and Ventura County Air Pollution Control District through this effort, as detailed in Table 1. When appropriate, staff has also coordinated meetings with public agencies and other interested stakeholders to hold specific PEIR related discussions, upon request. The content for targeted outreach was tailored to the specific interests of the stakeholders.

**Table 1: 2024 Draft PEIR Stakeholder Outreach (As of Mid-March 2023)**

Date	Forum	Stakeholder Representatives	Topics Covered
November 9, 2022	2024 Draft PEIR NOP Scoping Meeting #1	Business; Environmental; Public Agencies; General Public	Connect SoCal 2024 Project and 2024 PEIR Overview
November 10, 2022	2024 Draft PEIR NOP Scoping Meeting #2	Business; Environmental; Public Agencies; General Public	Connect SoCal 2024 Project and 2024 PEIR Overview
October 10, 2022	GLUE Counsel	Business	Release of the NOP
October 31, 2022	Aviation Technical Advisory Committee	Aviation and Airports	Status Update on the PEIR Aviation Technical Report
January 4, 2023	Western Riverside County Regional Conservation Authority / Riverside County Transportation Commission	Public Agencies	Conservation
February 16, 2023	Joint Sustainable & Resilient Communities/Natural & Farm Lands Conservation	Environmental; General Public	PEIR Overview & Status Update, Recap on NOP Comments, and Preliminary Approach to Biological Resources Impact Analysis
March 8, 2023	South Coast Air Quality Management District	Air Districts	PEIR Overview, Preliminary Technical Methodology for Air Quality and GHG Impacts Analyses
March 13, 2023	City of Riverside	Public Agencies	Transportation Impacts Analysis
March 14, 2023	Ventura County Air Pollution Control District	Air Districts	PEIR Overview, Preliminary Technical Methodology for Air Quality and GHG Impacts Analyses
March 16, 2023	Technical Working Group	Business; Environmental; Public Agencies; General Public	PEIR Status Update and Major Components
April 3, 2023	GLUE Counsel	Business; General Public	PEIR Overview/Status Update

Stakeholder engagement efforts throughout the development of the 2024 Draft PEIR will be ongoing through both existing venues and targeted meetings on specific PEIR topics, upon request.

### **Highlights of Preliminary Approaches to Major Components of the 2024 Draft PEIR:**

Building upon the certified Final PEIR for Connect SoCal 2020 and the 2024 Draft PEIR presentations and discussions at various targeted stakeholder outreach meetings discussed above, SCAG staff has prepared a set of preliminary approaches to the 2024 Draft PEIR. While staff continues to evaluate various appropriate approaches to the PEIR analysis during preparation of the 2024 Draft PEIR document, which is ongoing at this time, staff's intent is to inform the EEC members of the PEIR team's current thinking to offer the opportunity to review, comment, and become familiar with the PEIR's approaches such that a recommendation for approval to release the 2024 Draft PEIR document may be made to the RC in Fall 2023.

The following discussion highlights the preliminary approaches to addressing four major components of the 2024 Draft PEIR.

#### **1. Environmental Setting**

CEQA requires an EIR to identify an environmental setting and create a baseline to which potential incremental environmental impacts that would be expected to result from implementation of the proposed Plan is compared. CEQA allows discretion for the Lead Agency to select an appropriate CEQA baseline to determine what constitutes existing conditions. The 2024 Draft PEIR is proposing to select 2019 as the baseline year, based on the following considerations: stable benchmark that is appropriate for a regionwide environmental analysis; availability of comprehensive data (i.e. land use, demographics, traffic count, and vehicle miles traveled) at the regional scale; as well as technical and modeling assumptions for the proposed Plan. Where appropriate and identified throughout the 2024 Draft PEIR, the base year of the environmental and regulatory settings of some resource areas may vary to better characterize baseline conditions and may differ from the time of the NOP release.

#### **2. Environmental Impacts Analyses by Topics**

**Structure and Environmental Topics.** Similar to the Connect SoCal 2020 PEIR, the contents of the 2024 Draft PEIR will be structured to follow the environmental topics included in the Appendix G of the CEQA Guidelines, as presented in Table 2, Environmental Topics Covered in the 2024 Draft PEIR, below. Please note that Environmental Justice is not an issue area required for environmental analysis under CEQA, and, therefore, the 2024 Draft PEIR will not include a designated Environmental Justice section. However, a robust Environmental Justice analysis will be included in Connect SoCal 2024, and the 2024 Draft PEIR will integrate and cross-reference relevant information from the Connect SoCal 2024 Environmental Justice analysis throughout the various Draft PEIR sections, where applicable.

**Table 2: Environmental Topics\* Covered in the 2024 Draft PEIR**

<ul style="list-style-type: none"> <li>• Aesthetics</li> <li>• Agriculture and Forestry Resources</li> <li>• Air Quality**</li> <li>• Biological Resources</li> <li>• Cultural Resources</li> <li>• Energy</li> <li>• Geology and Soils</li> <li>• Greenhouse Gas Emissions</li> <li>• Hazards and Hazardous Materials</li> <li>• Hydrology and Water Quality</li> </ul>	<ul style="list-style-type: none"> <li>• Land Use and Planning</li> <li>• Mineral Resources</li> <li>• Noise</li> <li>• Population and Housing</li> <li>• Public Services</li> <li>• Recreation</li> <li>• Transportation</li> <li>• Tribal Cultural Resources</li> <li>• Utilities and Service Systems</li> <li>• Wildfire</li> </ul>
--	--

Notes: \*Environmental Justice is not an issue area required for environmental analysis under CEQA, and, therefore, the 2024 Draft PEIR will not include a designated Environmental Justice section. \*\* The Air Quality Section will include a Health Risk Assessment. The Air Quality Section will also include a Health Impact Assessment per the December 2018 California Supreme Court’s decision in the case of *Sierra Club v. County of Fresno* (2018) 5. Cal. 5th 502.

**Analytical Themes.** Analysis of CEQA topic areas, where applicable, will include Plan benefits that are anticipated to result from region-wide, ongoing implementation of policies and programs that promote active transportation, public health, and quality of life and that also integrate transit and transportation facilities with land use planning and sustainable communities strategies in the SCAG region. The 2024 Draft PEIR may also recognize other environmental-related SCAG work efforts and initiatives underway that could co-benefit the environment in addition to Plan benefits.

The 2024 Draft PEIR will also enhance its interdisciplinary approach to analyzing environmental impacts, acknowledging crossover in environmental impacts between resource areas (e.g., environmental impacts from hydrogen vehicles crossover between air quality construction emissions, transportation of hazardous materials, and energy). The 2024 Draft PEIR will look for opportunities to identify shared impacts and address them comprehensively to the extent feasible.

Additionally, the 2024 Draft PEIR aims to increase clarity and succinctness of the PEIR document, where feasible and appropriate, by cross-referencing within and across sections to avoid duplication. Technical appendices will be used to hold extensive technical details to condense analyses in the 2024 Draft PEIR sections to be more reader friendly while maintaining the informative value to decision-maker and the public.

### 3. CEQA Mitigation Measures

CEQA requires that SCAG identify all feasible mitigation measures in the PEIR that will avoid or substantially lessen the significant environmental effects of the Plan. As SCAG has no concurrent authority/jurisdiction to implement mitigation related to transportation and land use projects or plans that implement Connect SoCal 2024, the upcoming 2024 Draft PEIR will employ the same approach to mitigation measures as the previously certified PEIRs for the 2016-2040 RTP/SCS and Connect SoCal 2020 (2020-2045 RTP/SCS). The mitigation approach will bifurcate the mitigation measures into two types: SCAG mitigation measures and project-level mitigation measures.

**SCAG Mitigation Measures.** SCAG mitigation measures are program wide measures for implementation by SCAG that address the large-scale regional impacts from the variety of projects spread over more than 20 years.

**Project-level Mitigation Measures.** The 2024 Draft PEIR will also identify project-level mitigation measures as resources for implementing CEQA lead agencies to consider, as applicable and feasible, when these agencies conduct and carry out subsequent, project-specific design, environmental analyses, and decision-making processes to meet the specified performance standards for the mitigation to achieve.

The bifurcated mitigation approach fulfills SCAG's responsibilities as a lead agency pursuant to the provisions of CEQA; recognizes the limits of SCAG's authority; distinguishes between SCAG commitments and project-level lead agency responsibilities; optimizes flexibility for project implementation; and facilitates CEQA streamlining and tiering where appropriate on a project-by-project basis determined by each implementing agency. Plan Design Features may also serve to mitigate the potential environmental impacts of the Plan.

### 4. Alternatives Analysis Approach

The 2024 Draft PEIR will consider a range of reasonable alternatives to Plan. Pursuant to CEQA, a range of reasonable alternatives include those alternatives that would feasibly attain most of the basic objectives of the 2024 Draft PEIR but would avoid or substantially lessen any of the significant environmental effects. The range of alternatives required in the PEIR is limited to only those alternatives necessary to permit a reasoned choice. The PEIR need not consider an alternative whose effect cannot be reasonably ascertained and whose implementation is remote and speculative. The PEIR will briefly describe the rationale for selecting the alternatives to be discussed.

Connect SoCal 2024 is still under development which will inform the design considerations for the number and range of alternatives considered in the 2024 Draft PEIR. However, based on the preliminary evaluation of previous RTP/SCSs and respective alternatives analysis in the associated



PEIRs, SCAG staff has generally observed that as local agencies incorporate RTP/SCS concepts into their own general/local plans, the previously analyzed No Project alternatives are showing signs of converging with previous regional plans. Additionally, as the Plan is updated and improves each cycle, it also gets closer to regional policies for more compact development patterns in high-quality transit areas (HQTAs). As such, SCAG has found that using a scenario planning process to identify alternative land use patterns for the 2024 RTP/SCS to be less useful and instead incorporated regional growth strategies in datasets for review by local jurisdictions which will then be incorporated into the Plan. Given this shift in approach and the converging of alternative scenarios, SCAG is currently considering a qualitative analytical approach for the alternatives other than the No Project Alternative.

The PEIR team is still in the process of identifying impacts of the Plan but is considering to, at a minimum, analyze the following two Plan alternatives in the 2024 Draft PEIR: 1) No Project Alternative and 2) Intensified Land Use Alternative, as discussed below. The No Project Alternative and the Intensified Land Use Alternative are expected “book-ends” of the range of potential alternatives to provide a framework for understanding the greatest potential impacts from alternatives when compared to the proposed Plan.

**No Project Alternative.** The No Project Alternative is required by CEQA Guidelines Section 15126.6(e)(2) and assumes what would reasonably be expected to occur in the foreseeable future if Connect SoCal 2024 were not adopted. The No Project Alternative assumes continued implementation of goals and polices of the adopted 2020 RTP/SCS, as amended. The No Project Alternative would include those transportation projects that are in the first year of the previously conforming FTIP (i.e., 2023 FTIP).

**Intensified Land Use Alternative.** SCAG anticipates that it will consider an Intensified Land Use Alternative which would be based on a transportation network for the 2024 RTP/SCS with more aggressive land use development patterns. Land use development patterns in this alternative would build on land use strategies as described in the Plan by maximizing growth around HQTAs. Potential growth patterns associated with this alternative would optimize urban areas and suburban town centers, livable corridors, and neighborhood mobility areas.

**Next Steps:**

Key milestones for development of the Connect SoCal 2024 PEIR are listed in Table 3, below.

**Table 3: Key Milestones for the Connect SoCal 2024 PEIR**

Milestones	Dates (Expected)
Release of 2024 Draft PEIR for Public Review and Comments	Within 30 days after Draft Connect SoCal 2024 Release
2024 Draft PEIR Public Review and Comment Period Closes	At least 45 days after 2024 Draft PEIR Release
Certification of the Final PEIR for the Final Connect SoCal 2024 by the RC	April 2024

Key milestones for EEC review of and action on the Connect SoCal 2024 PEIR are listed in Table 4, below.

**Table 4: Key Milestones for EEC Review of and Action on the Connect SoCal 2024 PEIR**

Milestones	Dates (Expected)
EEC Review of Preliminary Approaches to 2024 Draft PEIR Major Components and Preliminary Contents	Spring-Summer 2023 (this meeting)
EEC Review of the Highlighted Contents of the 2024 Draft PEIR and Consideration to Recommend that RC Release the 2024 Draft PEIR for Public Review and Comments	Fall 2023
EEC Review of the Highlighted Contents of the Proposed 2024 Final PEIR and Consideration to Recommend that RC Certify the Proposed 2024 Final PEIR	March 2024

Staff will continue to provide periodic status updates to the EEC at the next several EEC or Joint Committee meetings as development of the Connect SoCal 2024 PEIR progresses such that a recommendation for approval to release the 2024 Draft PEIR can be made to the RC currently planned in Fall 2023.

**FISCAL IMPACT:**

Work associated with this item is included in the current Fiscal Year 2022/23 Overall Work Program (23-020.0161.04: Environmental Compliance, Coordination & Outreach).

**ATTACHMENT(S):**

1. PowerPoint Presentation - 2024 PEIR Stakeholder Outreach and Approach to Major Components



# Connect SoCal 2024 PEIR: Stakeholder Outreach and Preliminary Approaches to Major Components

Energy and Environment Committee  
April 6, 2023

[WWW.SCAG.CA.GOV](http://WWW.SCAG.CA.GOV)



## Presentation Agenda

- 1 **Introduction**
- 2 **Objectives**
- 3 **Stakeholder Outreach Efforts & Opportunities**
- 4 **Highlights of Preliminary Approaches to Major Components**
- 5 **Next Steps**

## Connect SoCal 2024 PEIR and SCAG's Role

- SCAG is the CEQA Lead Agency for the Connect SoCal 2024
- SCAG determined a Program EIR is the appropriate type of CEQA document
- The PEIR will include a region-wide, first-tier, programmatic level environmental assessment



## Presentation Objectives

- 1) Stakeholder outreach efforts and opportunities
- 2) Highlights of preliminary approach and seek early feedback before release of the 2024 Draft PEIR (anticipated Fall 2023)



# Stakeholder Outreach Efforts & Opportunities



## Stakeholder Outreach Efforts & Opportunities

### Required Public Outreach Pursuant to CEQA

- SCAG released the [Notice of Preparation \(NOP\) of a Draft PEIR for Connect SoCal 2024](#) (State Clearinghouse No.: 2022100337) for a required 30-day public review and comment period:  
**10/17/2022 – 11/16/2022**
- Held two virtual public scoping meetings on November 9 and 10, 2022.



**NOTICE OF PREPARATION**

**TO:** Interested Agencies, Organizations, and Individuals

**SUBJECT:** Notice of Preparation of a Draft Program Environmental Impact Report for Connect SoCal 2024 (2024-2050 Regional Transportation Plan/Sustainable Communities Strategy) (State Clearinghouse No. T80)

**DATE:** October 17, 2022

**LEAD AGENCY:** Southern California Association of Governments  
900 Wilshire Blvd, Suite 1700  
Los Angeles, California 90017

The Southern California Association of Governments (SCAG), as Lead Agency, is publishing this Notice of Preparation (NOP) to prepare a Draft Program Environmental Impact Report (Draft PEIR) in accordance with the California Environmental Quality Act (CEQA) for the proposed 2024-2050 Regional Transportation Plan and Sustainable Communities Strategy (RTP/SCS), referred to alternatively as "2024 RTP/SCS", "Connect SoCal 2024", "Plan", or "Project".

To ensure full consideration of environmental issues with potential significant adverse impacts when preparing the Draft PEIR, all written comments on the NOP must be received within thirty (30) days of the start of the required 30-day public review and comment period, which begins October 17, 2022, and ends November 16, 2022 at 5:00 PM (PST).

Two (2) virtual public scoping meetings for the NOP, each providing the same information, will be held on **Wednesday, November 9, 2022, from 6:00 PM to 8:00 PM**, and **Thursday, November 10, 2022, from 10:00 AM to 12:00 PM**. The meetings will be held in an online format using Zoom. You may join, view, and participate in the meetings by using the Zoom application, by your web browser, or by phone. Information for the webinar is provided below:

<https://scag.zoom.us/j/91023287939>  
 Dial by location: +1 669 900 6833 US Toll or +1 669 444 9171 US Toll  
 Meeting ID: 91023287939

Please send your comments on the NOP to Ms. Karen Calderon, Senior Regional Planner, either electronically to: [ConnectSoCal@scag.ca.gov](mailto:ConnectSoCal@scag.ca.gov) or by mail to the address shown above. If you wish to be placed on the mailing list to receive CEQA notices regarding the PEIR for the Plan, need additional information, or require special accommodations or translation services for a scoping meeting, please email Ms. Karen Calderon at least 72 hours prior to the scoping meeting or call (213) 236-1983 so that SCAG has sufficient time to make arrangements.

Footnote: SCAG. Available at: <https://scag.ca.gov/ceqa>

## Required Tribal Outreach Pursuant to AB 52

- California Native American Heritage Commission (NAHC) provided a contact list of tribes traditionally and culturally affiliated with the SCAG region
- Staff sent Tribal Consultation Initiation letters to 64 tribal government contacts (representing 54 tribes)
- Concluded required AB 52 tribal outreach with no requests for consultation



## Additional Stakeholder Outreach

- Beyond state requirements
- Consider SCAG's existing forums, Plan outreach initiatives, and outreach efforts from previous RTP/SCS PEIRs
- Consists of two components:
  - 1) leveraging existing stakeholder outreach forums
  - 2) targeted outreach



## Existing Stakeholder Outreach Forums (Ongoing)

- [Technical Advisory Committees](#)
- [Regional Planning Working Groups](#)
- [SCAG's Policy Committees](#)
- Attendants include representatives from the business/development sector; the environmental sector; local jurisdictions; and the general public

## Targeted Stakeholder Outreach (Ongoing)

- Key stakeholders by topics specific to the PEIR
  - E.g. Air Districts
- Meetings with public agencies and other interested stakeholders, upon request
- Stakeholder engagement opportunities will be ongoing throughout the development of the 2024 Draft PEIR



# HIGHLIGHTS OF PRELIMINARY APPROACHES TO MAJOR COMPONENTS

Highlights of Preliminary Approaches to Major Components

## Environmental Setting

- CEQA requirements
  - Typically, date of NOP release
  - CEQA allows Lead Agency discretion
- Proposing to select 2019 as baseline year
- Preliminary Considerations:
  - Stable and appropriate for regionwide environmental analysis
  - Data availability
  - Technical and modeling assumptions
- CEQA baseline year may vary depending on environmental resource areas



## Environmental Impacts Analyses by Topics

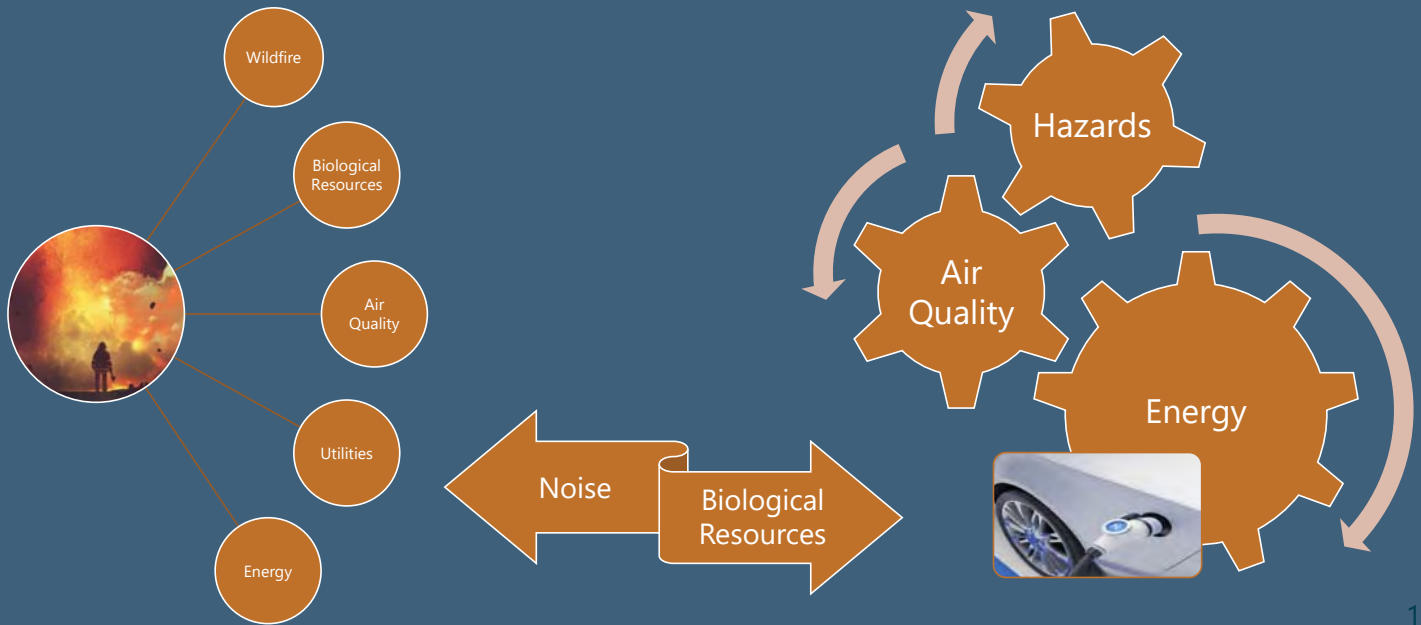
- Structure and topics consistent with Appendix G of the CEQA Guidelines
- Environmental Justice is not a CEQA impact area

Environmental Topics Covered in the 2024 Draft PEIR		
Aesthetics	Agriculture & Forestry Resources	Air Quality
Biological Resources	Cultural Resources	Energy
Geology and Soils	Greenhouse Gas Emissions	Hazards and Hazardous Materials
Hydrology & Water Quality	Land Use & Planning	Mineral Resources
Noise	Population and Housing	Public Services
Recreation	Transportation	Tribal Cultural Resources
Utilities & Service Systems	Wildfire	

## Analytical Themes

- Discuss Plan elements and other environmental-related SCAG work that could co-benefit the environment, where applicable
- Enhance interdisciplinary approach to analyzing environmental impacts

## Examples of Interdisciplinary Approach



15

## Mitigation Measures

- CEQA requirements
- SCAG has no authority or jurisdiction to require or implement project-level mitigation
- SCAG Mitigation Measures
  - Implemented by SCAG
- Project-Level Mitigation Measures
  - Implemented by local agencies or developers, as applicable
  - Useful for tiering
- Plan Design Features may also serve to mitigate potential environmental impacts of the Plan



16

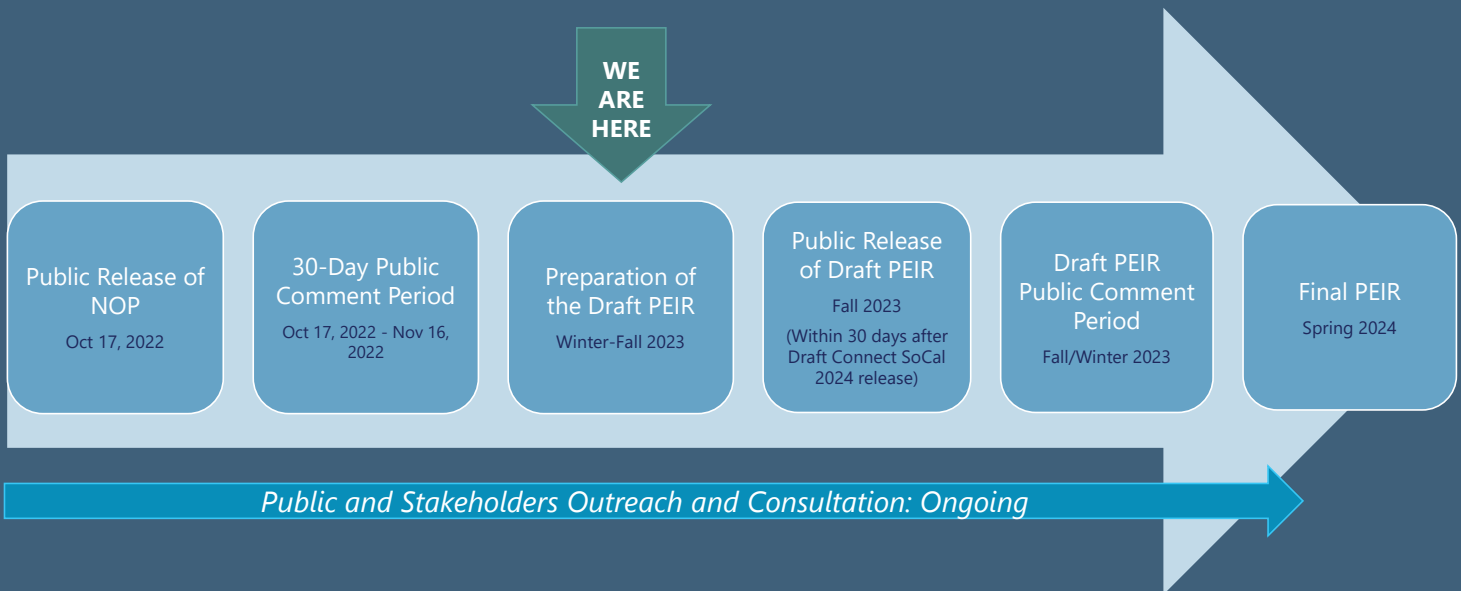
# Preliminary Consideration of Alternatives

- CEQA Requirements:
  - No Project Alternative
  - A range of reasonable alternatives
  - Meet most of the basic project objectives (Plan Goals and Objectives)
  - At least one needs to be environmentally superior
- Preliminary Alternatives:
  - No Project Alternative (Quantitative)
  - Intensified Land Use Alternative (Qualitative)



Conclusion

## Next Steps





# THANK YOU!

---

For more information, please visit: <https://scag.ca.gov/peir>

For questions, please contact Karen Calderon at: (213) 236-1983  
or via e-mail: [ConnectSoCalPEIR@scag.ca.gov](mailto:ConnectSoCalPEIR@scag.ca.gov)



**To:** Executive/Administration Committee (EAC)  
 Community Economic & Human Development Committee (CEHD)  
 Energy & Environment Committee (EEC)  
 Transportation Committee (TC)  
 Regional Council (RC)

**From:** Kevin Kane, Principal Planner  
 (213) 236-1828, kane@scag.ca.gov

**Subject:** Connect SoCal 2024: Locally-Reviewed Growth Forecast Demographic and Economic Evaluation

EXECUTIVE DIRECTOR'S  
APPROVAL

**RECOMMENDED ACTION:**

Receive and File

**STRATEGIC PLAN:**

This item supports the following Strategic Plan Goal 1: Produce innovative solutions that improve the quality of life for Southern Californians. 3: Be the foremost data information hub for the region.

**EXECUTIVE SUMMARY:**

*Among the first steps in Connect SoCal 2024 is the development of growth projections for population, households, and employment in the region and six counties. With the help of an expert panel and consultants, staff developed a methodology and forecasted high, medium, and low regional growth ranges in Fall 2021. In February 2022, staff presented the preliminary regional and county growth forecast for 2019-2050 to the Joint Policy Committee. Staff then conducted a comprehensive outreach effort to all 197 local jurisdictions called the Local Data Exchange (LDX). SCAG asked local jurisdictions to review and provide feedback on the preliminary household and employment growth forecasts as well as several other Connect SoCal data layers by December 2, 2022.*

*This report presents staff's assessment of the locally-reviewed forecast, which projects 2.3 percent higher household growth, 1.8 percent higher population growth, and 1.0 percent higher employment growth than the preliminary forecast. This indicates that upon integrating the growth outlook of the region's local plans (in aggregate), Southern California is likely to grow more than was projected based on principally demographic and economic drivers as assessed in late 2021. Staff finds this forecast to be technically sound. Staff continue to assess and analyze the city and neighborhood-level edits provided by local jurisdictions.*

**BACKGROUND:**

Pursuant to Government Code 65080(b)(2)(B) et seq., Connect SoCal 2024 is required to:

*“set forth a forecasted development pattern for the region, which, when integrated with the transportation network, and other transportation measures and policies, will reduce the greenhouse gas emissions from automobiles and light trucks to achieve, if there is a feasible way to do so, the greenhouse gas emission reduction targets approved by the state board and will allow the regional transportation plan to comply with Section 176 of the federal Clean Air Act (42 U.S.C Sec. 7506).”*

With the help of an expert panel and consultants, staff developed a methodology and forecasted high, medium, and low regional growth ranges in Fall 2021. Panelists were asked to consider the most likely, and also reasonable higher and lower levels of seven key inputs to SCAG’s long-range forecast: births, deaths, immigration, domestic migration, labor force participation, and household formation. Rather than simply taking the highest and lowest of each input, the purpose of this exercise was to develop a coherent baseline as well as an understanding of where high and low future values might fall based on an assessment of these demographic and economic factors. The three scenarios included:

- Baseline (mid): *Slower Growth, Steady Improvement*
- Low: *Secular Stagnation*
- High: *Robust and Equitable Future Growth supported by Policy and Technology*

Importantly, each scenario must be reasonably balanced across population, households, and employment. Put differently, are there enough workers for the projected jobs and is there enough housing for them (Figure 1)?



Figure 1

---

Even before the COVID-19 pandemic, emerging data suggested that the population growth trajectory forecasted in Connect SoCal 2020 would require a downward revision. Fewer births, more deaths, and the temporary slowdown of foreign immigration from the pandemic has resulted in zero or negative population growth. While this kind of long-range projection must assess and integrate near-term shocks, its primary objective is to assess the likely growth to 2050 which is more heavily influenced by the strengths of Southern California compared to other US regions. With a favorable mix of industries, strong innovation hubs, a welcoming culture, and desirable natural amenities, it is difficult to foresee Southern California decreasing in jobs compared to the US. As such, the middle growth scenario titled “Slower growth, steady improvement” reflects the overall direction of the preliminary Connect SoCal 2024 projection and was updated and shared with SCAG’s Joint Policy Committee in February 2022.

While population growth is expected to continue, albeit more slowly, there are two major reasons that the growth rate in households is expected to exceed the population growth rate. First, the population is ageing even more quickly than anticipated, increasing the number of small households. Second, evidence is emerging that continued strength in housing production despite low population growth is beginning to address the previously existing housing shortage.

The Demographic Panel of Experts, which met twice in the Fall of 2021, stressed that the overwhelming impediment to increased employment growth in the region was housing supply and affordability. If this could not be addressed, the region’s growth trajectory might more closely resemble the low scenario. However, if a combination of market and policy factors could yield increases in household formation, the region’s strong economic fundamentals would be realized in strong job growth and a higher projection would be plausible.

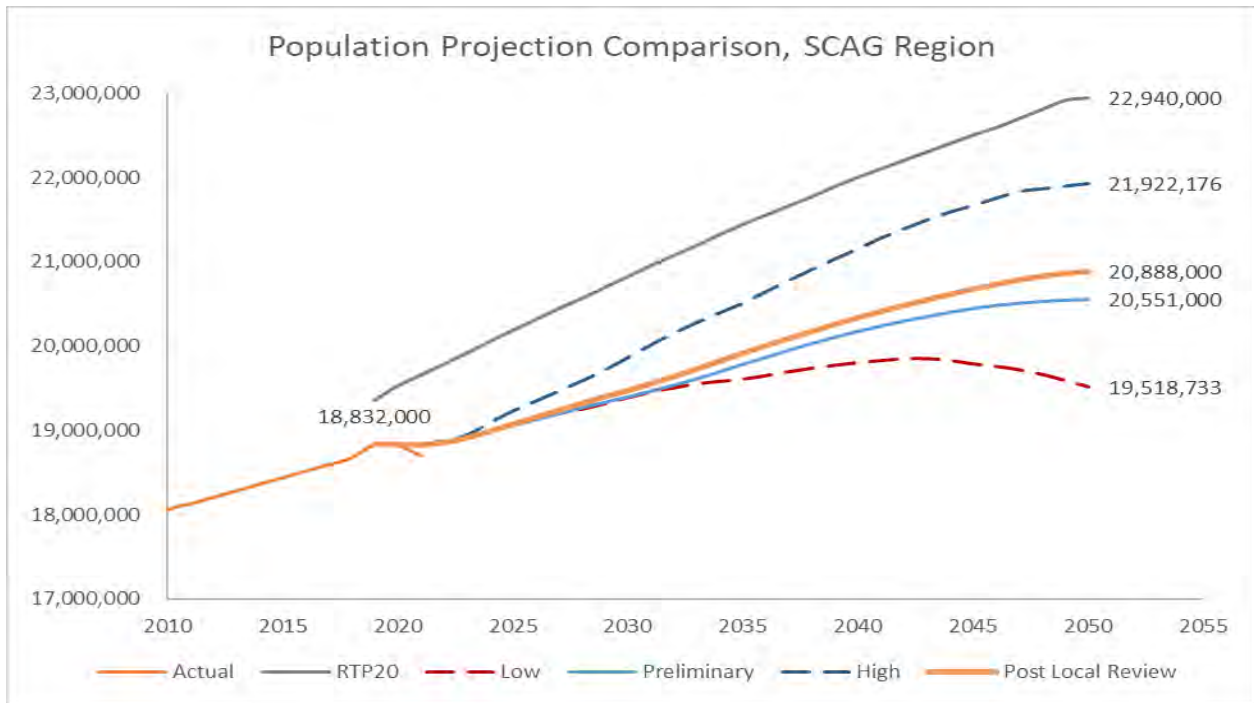


Figure 2

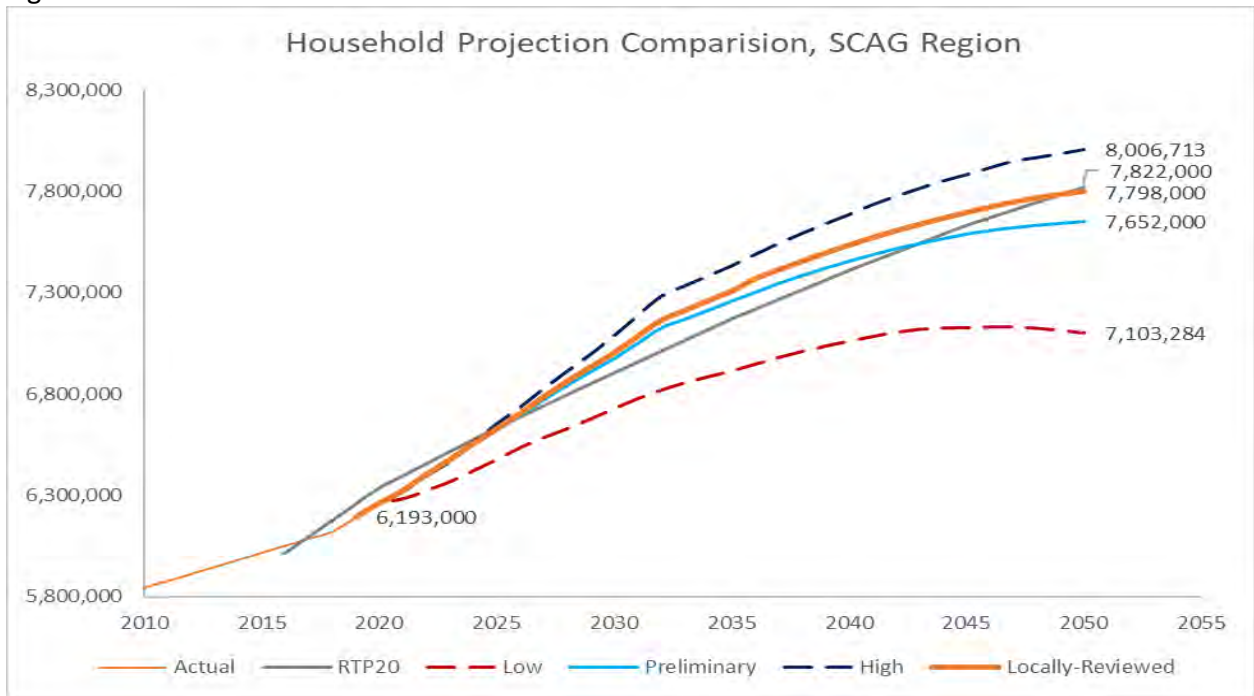


Figure 3



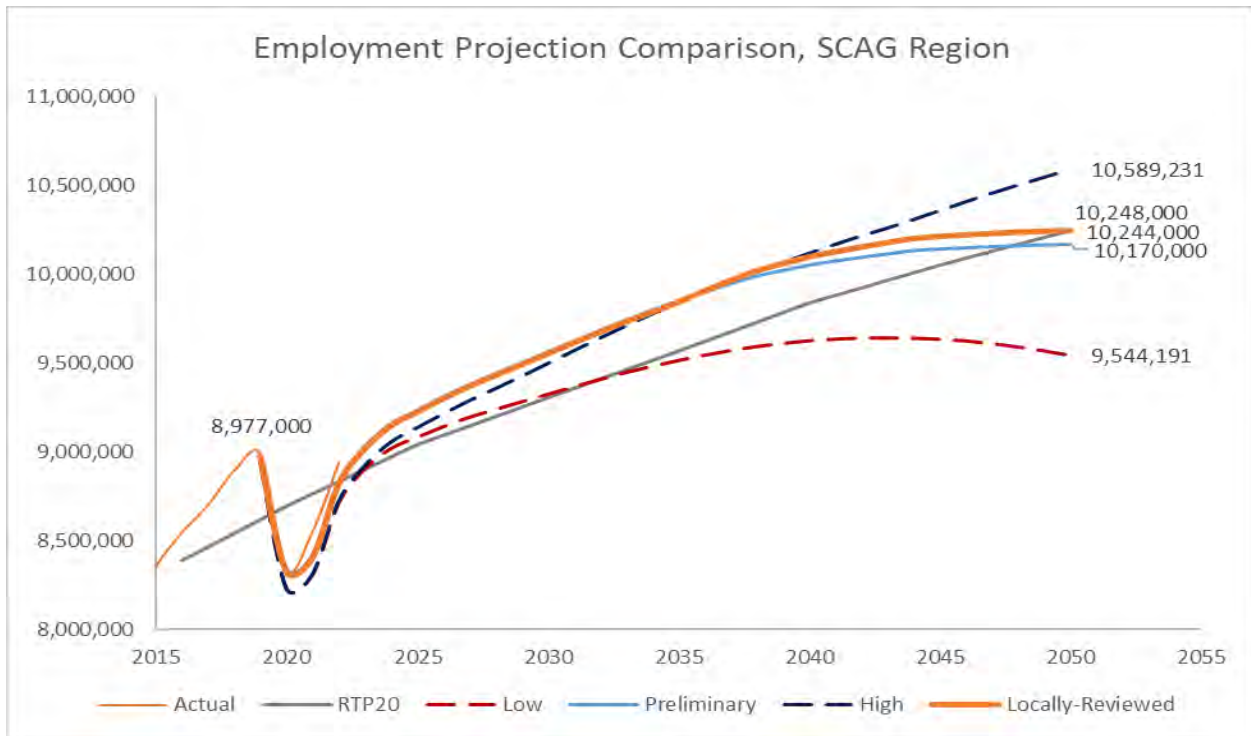


Figure 4

Actual data in Figures 2-4 are from the US Decennial Census, CA DOF, CA EDD, ACS PUMS, and BLS QCEW. Projections are from the final Connect SoCal 2020 and the preliminary and locally-reviewed versions of Connect SoCal 2024.

At the June 2022 CEHD meeting, staff presented the preliminary methodology for allocating this growth to the jurisdictional and neighborhood (i.e., Transportation Analysis Zone, or TAZ) levels to form a *preliminary forecasted regional development pattern* which followed the following principles:

1. **Rooted in local planning policies.** The forecasted regional development pattern will use available local general plan information as a starting point and local jurisdictions will be asked to update and review the forecast with their expertise of local planning context and ongoing planning work.
2. **Steered by a regional vision.** The forecasted regional development pattern will integrate growth strategies of Connect SoCal 2020 and follow regional and county forecast totals as guided by the Panel of Experts.
3. **Aligned with state policy.** The forecasted regional development pattern will reflect policies including the 6<sup>th</sup> cycle housing element process and be assessed considering SCAG’s SB 375 greenhouse gas emission reduction targets.

Between February and December 2022, staff conducted the LDX process, formally meeting with 164 jurisdictions, and receiving data inputs from 142 jurisdictions by the December 2, 2022 deadline. Jurisdictions were asked to review total households and employment in 2019, 2035, and 2050. Input from jurisdictions became the *locally-reviewed forecasted regional development pattern*. While staff continues to assess the transportation and other impacts of locally-reviewed growth, this report provides staff’s assessment of *locally-reviewed* county and region-level totals against the preliminary projections reviewed by the Panel of Experts.

Household and employment totals in 2019, 2035, and 2050 were those received from jurisdictions (if input was provided). Intermediate years were generated by SCAG staff based on the trends found in the preliminary projections. Population totals were derived from the household totals provided by local jurisdictions, plus the population-to-household ratio in the preliminary population projections. In some instances, jurisdictions provided comments that additional growth was likely to be concentrated in smaller housing units, thus the increase in population is less than the increase in households.

Compared to the preliminary version, the locally-reviewed forecast projects 2.3 percent higher household growth, 1.0 percent higher employment growth, and 1.8 percent higher population growth by 2050:

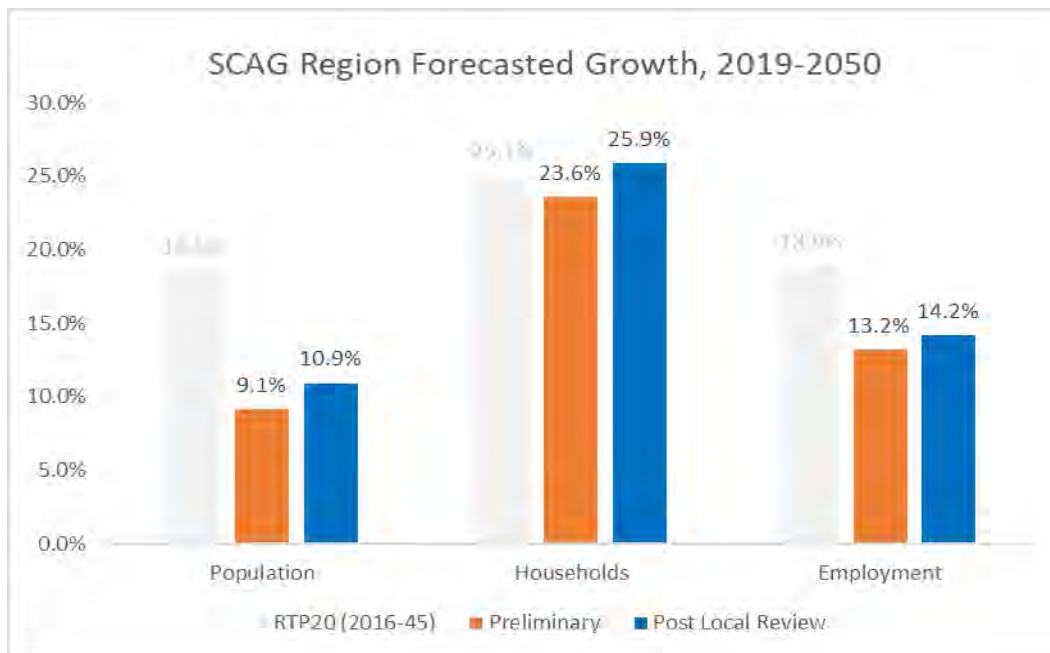


Figure 5

Table 1

**SCAG Connect SoCal 2024 Locally-Reviewed Regional and County Growth Forecast**  
*Provided to the Technical Working Group on 3/16/2023*

Total Population	2019	2020	2025	2030	2035	2040	2045	2050	2019-2050	
									Growth	Pct. Growth
Imperial	181,000	180,000	186,000	193,000	198,000	203,000	207,000	210,000	29,000	16.0%
Los Angeles	10,046,000	10,018,000	10,051,000	10,230,000	10,449,000	10,633,000	10,749,000	10,767,000	721,000	7.2%
Orange	3,191,000	3,188,000	3,208,000	3,247,000	3,299,000	3,356,000	3,401,000	3,439,000	248,000	7.8%
Riverside	2,394,000	2,418,000	2,555,000	2,674,000	2,784,000	2,857,000	2,929,000	2,995,000	601,000	25.1%
San Bernardino	2,175,000	2,182,000	2,227,000	2,278,000	2,325,000	2,429,000	2,536,000	2,626,000	451,000	20.7%
Ventura	846,000	844,000	842,000	848,000	858,000	860,000	858,000	851,000	5,000	0.6%
SCAG	18,833,000	18,830,000	19,069,000	19,470,000	19,913,000	20,338,000	20,680,000	20,888,000	2,055,000	10.9%

Total Households	2019	2020	2025	2030	2035	2040	2045	2050	2019-2050	
									Growth	Pct. Growth
Imperial	52,000	52,000	56,000	61,000	65,000	68,000	70,000	72,000	20,000	38.9%
Los Angeles	3,393,000	3,420,000	3,595,000	3,788,000	3,948,000	4,049,000	4,114,000	4,138,000	745,000	22.0%
Orange	1,069,000	1,080,000	1,123,000	1,164,000	1,196,000	1,221,000	1,239,000	1,253,000	184,000	17.2%
Riverside	744,000	761,000	834,000	903,000	965,000	1,001,000	1,034,000	1,064,000	319,000	42.9%
San Bernardino	657,000	668,000	727,000	780,000	816,000	874,000	917,000	953,000	296,000	45.0%
Ventura	278,000	281,000	294,000	307,000	318,000	321,000	321,000	318,000	40,000	14.5%
SCAG	6,193,000	6,262,000	6,629,000	7,003,000	7,307,000	7,534,000	7,695,000	7,798,000	1,605,000	25.9%

Total Employment	2019	2020	2025	2030	2035	2040	2045	2050	2019-2050	
									Growth	Pct. Growth
Imperial	69,000	69,000	73,000	78,000	82,000	85,000	88,000	91,000	22,000	31.9%
Los Angeles	5,032,000	4,603,000	5,111,000	5,263,000	5,387,000	5,488,000	5,492,000	5,433,000	401,000	8.0%
Orange	1,805,000	1,684,000	1,857,000	1,903,000	1,942,000	1,977,000	1,998,000	2,019,000	214,000	11.9%
Riverside	847,000	800,000	909,000	983,000	1,057,000	1,106,000	1,147,000	1,185,000	338,000	39.9%
San Bernardino	860,000	838,000	903,000	948,000	992,000	1,060,000	1,108,000	1,145,000	285,000	33.1%
Ventura	363,000	332,000	371,000	379,000	384,000	383,000	380,000	376,000	13,000	3.6%
SCAG	8,977,000	8,326,000	9,224,000	9,553,000	9,843,000	10,099,000	10,215,000	10,248,000	1,273,000	14.2%

*Note: Projections rounded to the nearest 1000. Population projections based on SCAG's preliminary model plus household totals provided by local jurisdictions.*

SCAG demographic and economic staff, with assistance from PRB, conducted a series of robustness checks on the revised regional totals.

1. Locally-reviewed totals are well within the high and low ranges initially developed. While total households, employment, and population are all higher than the preliminary projection, they remain below the high scenario initially envisioned.
2. Following local review, household and employment both moved in the same direction. This contrasts with prior regional plans in which local review typically yields a higher employment projection, but a lower household projection. The result is a more balanced projection in terms of regional jobs and housing than has been done in the past.
3. The Demographic Panel of Experts noted that a higher growth could be possible if a combination of market and policy factors yielded increases in household formation. The locally-reviewed projection’s higher household growth is reflective of a greater amount of upcoming and planned housing development than was reflected in the preliminary projection.
4. The regional P:E ratio in 2050 increased nominally from 2.02 to 2.04. This is in line with expectations, owing to the higher rise in households than jobs following local review, and the decrease from the 2019 ratio of 2.10 is consistent with the expectations in the preliminary projection. A P:E ratio above 2, which is consistent with the region’s historic average, generally indicates sufficient population growth to fill the additional jobs which are projected.

**Population-to-Employment (P:E) Ratio**

	SCAG	Imperial	Los Angeles	Orange	Riverside	S. Bernardino	Ventura
2019	2.10	2.60	2.00	1.77	2.83	2.53	2.33
Growth	1.62	1.37	1.80	1.16	1.78	1.59	0.41
2050	2.04	2.31	1.98	1.70	2.53	2.29	2.26
<i>Difference from SCAG Region:</i>							
2019		0.50	-0.10	-0.33	0.73	0.43	0.23
2050		0.28	-0.06	-0.33	0.49	0.26	0.23

Table 2

5. A principle of the preliminary projection at the county level was to ensure that each county’s household growth is commensurate with its employment growth—i.e. will it be possible to house additional workers at least within the same county as where their jobs are anticipated. So long as a county’s P:E ratio doesn’t get *further* away from the regional value of 2.04, this is achieved—this is the case in all six counties in the region.

- a. For example, Los Angeles County currently has an oversupply of jobs compared to the region (suggesting in-commuting). However, by 2050 it is closer to the regional P:E ratio, (difference drops from -0.10 to -0.06 suggesting less future in-commuting).
  - b. Orange County’s job oversupply increases modestly; however, this is consistent with the regional trend toward fewer people per job and Orange County’s P:E ratio remains -0.33 below the region by 2050.
  - c. Many LA and Orange County jobs are filled by residents of Riverside County. However, by 2050 Riverside County’s job growth will have exceeded its population growth, meaning that it will have a more balanced relationship with the region.
6. The regional P:H ratio in 2050 decreased nominally from 2.69 to 2.68 after local review. This reflects both the ageing of the population and the expectation that housing production will continue to exceed the housing need derived from population growth. This is the case for every county in the region. In particular, the anticipated household growth by 2050 in Los Angeles County increased by 62,000 and in San Bernardino County by 55,000 following local review. A reasonable expectation from this trend is that household overcrowding rates, an indicator of housing undersupply in past periods, are likely to decline over the projection period.

**Population-to-Household (P:H) Ratio**

	SCAG	Imperial	Los Angeles	Orange	Riverside	S. Bernardino	Ventura
2019	3.04	3.50	2.96	2.98	3.22	3.31	3.04
Add'l people per add'l HH	1.28	1.45	0.97	1.35	1.89	1.53	0.13
2050	2.68	2.93	2.60	2.74	2.82	2.76	2.67

Table 3

7. The preliminary employment projection relied upon actual data through 2019. Comparing the preliminary projection with actual 2020-2022 employment, we see that the preliminary projections for the SCAG region closely followed the now-realized level of employment growth over the last three years. As such, we were able to replace 2020-2022 projections with actual data without requiring any additional modification. The post-LDX projection incorporates the input from local jurisdictions and shows 1.0 percent higher employment growth from 2019-2050 than the preliminary projection. The Local Data Exchange process provided valuable local knowledge regarding specific projects which are underway or expected soon and increases the robustness of SCAG’s forecast.

**Conclusions**

Following local review, staff followed up with several jurisdictions to request clarifications or additional documentation regarding major changes in growth projections. Broadly speaking, changes in growth took place where there was identified capacity to accommodate these changes. Specifically, efforts by Los Angeles County jurisdictions to promote infill or Accessory Dwelling Unit development have shown encouraging increases in recent years and are supported by local housing elements<sup>1</sup>. San Bernardino County growth rates have historically lagged behind neighboring Riverside County, however they nearly achieve parity in the locally-reviewed projection and suggest the county’s land use planning may be able to foster relatively higher growth rates going forward.

Finally, the locally-reviewed projection indicates some distinct differences between the near or mid-term within the forecast horizon versus the long-range. This differs from the projection in Connect SoCal 2020. This projection’s anticipation of higher household formation rates in the coming decade would reflect higher housing growth in the mid-term (particularly during the 6<sup>th</sup> cycle housing element update) which would accommodate anticipated population and job growth as well as alleviate some of the results of past undersupply. However, increases in age and mortality in the region (and globally) would result in a slower rate of household growth needed to accommodate population & job increases in the late 2030s and 2040s. The population and employment projections envision moderate growth in the mid-term but taper off by the later years of the projection.

Table 4: Annual Household Growth

5-year period	Locally-reviewed Connect SoCal 2024	Final Connect SoCal 2020
2020-2025	73,400	57,000
2025-2030	74,800	57,000
2030-2035	60,800	53,400
2035-2040	45,400	46,300
2040-2045	32,200	46,300
2045-2050	20,600	--

**FISCAL IMPACT:**

This work is supported by OWP item 055-4856-01, Regional Growth and Policy Analysis.

---

<sup>1</sup> For example, in 2021 the City of Los Angeles alone represented 22 percent of the entire state’s increase in multifamily housing, see [https://dof.ca.gov/wp-content/uploads/sites/352/Forecasting/Demographics/Documents/E-1\\_2022PressRelease.pdf](https://dof.ca.gov/wp-content/uploads/sites/352/Forecasting/Demographics/Documents/E-1_2022PressRelease.pdf). According to the California Department of Housing and Community Development’s Annual Progress Report data for 2021, 45 percent of the state’s permitted ADUs were in Los Angeles County.



Southern California Association of Governments  
April 6, 2023

**To:** Community Economic & Human Development Committee (CEHD)  
Energy & Environment Committee (EEC)  
Transportation Committee (TC)  
Regional Council (RC)

EXECUTIVE DIRECTOR'S  
APPROVAL

**From:** Anita Au, Planning Supervisor  
(213) 236-1874, au@scag.ca.gov

**Subject:** Connect SoCal 2024: Equity Analysis Update - Priority Equity Communities

**RECOMMENDED ACTION FOR EEC:**

Information Only – No Action Required

**RECOMMENDED ACTION FOR CEHD, TC, and RC:**

Receive and File

**STRATEGIC PLAN:**

This item supports the following Strategic Plan Goal 2: Advance Southern California’s policy interests and planning priorities through regional, statewide, and national engagement and advocacy.

**EXECUTIVE SUMMARY:**

*With direction from the Regional Council, Energy and Environment Committee (EEC), and Racial Equity and Regional Planning Subcommittee, SCAG continues to affirm its commitment to advancing justice, equity, diversity, and inclusion throughout Southern California by working to operationalize racial equity through regional planning functions. Last year staff proposed a new approach for Connect SoCal 2024’s Equity Analysis to the EEC. This staff report and the corresponding presentation provides an update on SCAG’s proposed approach for the Equity Analysis resulting from collaboration with internal subject matter experts and external stakeholders. Staff propose revised methods for defining Priority Equity Communities (formerly Environmental Justice areas) and Equity Performance Measures to frame and focus the Equity Analysis on populations that have been historically marginalized and are susceptible to inequitable outcomes.*

**BACKGROUND:**

As required by federal and state law, SCAG prepares a long-range Regional Transportation Plan/Sustainable Communities Strategy (RTP/SCS) every four years which provides a vision for

integrating land use and transportation for increased mobility and more sustainable development. SCAG's next RTP/SCS, Connect SoCal 2024, will incorporate important updates of fundamental data, enhanced strategies and investments based on, and intended to strengthen, the plan adopted by the SCAG Regional Council in 2020. An Equity Analysis is included to comply with statutory requirements and ensure there are no disparate or disproportionate impacts to people of color or low-income populations as a result of implementing Connect SoCal 2024.

The consideration of Environmental Justice (EJ) in the transportation process stems from Title VI of the Civil Rights Act of 1964,<sup>1</sup> and was further enhanced by Executive Order 12898<sup>2</sup> (1994) which established the need for transportation agencies to disclose to the general public the benefits and burdens of proposed projects on people of color and low-income populations. Executive Order 12898 amplified Title VI by providing protections based on income in addition to race and ordered all federal agencies to consider environmental justice during the planning and decision-making process for all federally funded projects. As a Metropolitan Planning Organization (MPO) that receives federal funding, SCAG is required to conduct early and meaningful outreach to EJ communities and develop an EJ analysis for its regional transportation plans. In addition to federal requirements, SCAG must also comply with California Government Code Section 11135,<sup>3</sup> which mandates fair treatment of all individuals for all state-funded programs and activities.

In July 2020, SCAG's Regional Council adopted Resolution 20-623-2, affirming its commitment to advancing justice, equity, diversity, and inclusion throughout Southern California and subsequently adopted the Racial Equity Early Action Plan (EAP) in May 2021, outlining goals, strategies, and actions to advance equity. The Energy and Environment Committee (EEC) provides policy direction for this work, which aligns with the primary goals of the EAP, which are to: 1) center racial equity in regional policy and planning and bring equity into SCAG's regional planning functions, and 2) encourage racial equity in local planning practices by promoting racial equity in efforts involving local elected officials and planning professionals. In March 2023, SCAG's Joint Policy Committee adopted the Racial Equity and Regional Planning Subcommittee White Paper, which included recommendations for Connect SoCal 2024 and suggested preliminary strategies for inclusion in the Plan.

---

<sup>1</sup> Title VI states that "No person in the United States shall, on the ground of race, color or national origin, be excluded from participation in, be denied the benefits of, or be subjected to discrimination under any program or activity receiving Federal financial assistance."

<sup>2</sup> Federal Actions To Address Environmental Justice in Minority Populations and Low-Income Populations, February 11, 1994. <https://www.archives.gov/files/federal-register/executive-orders/pdf/12898.pdf>

<sup>3</sup> California Government Code Section 11135 states "no person in the State of California shall, on the basis of race, national origin, ethnic group identification, religion, age, sex, sexual orientation, color, or disability, be unlawfully denied full and equal access to the benefits of, or be unlawfully subjected to discrimination under, any program or activity that is conducted, operated, or administered by the state or by any state agency that is funded directly by the state, or receives any financial assistance from the state."

---



On April 7, 2022, staff provided the EEC a preview of the approach for the Connect SoCal 2024 Equity Analysis, including revisiting the populations and communities analyzed in previous EJ analyses, and developing a new equity area definition of Priority Equity Communities. On September 1, 2022, staff provided the EEC with proposed updates to the equity performance measures for Connect SoCal 2024. With the input from members of the EEC and collaboration with internal subject matter experts and external stakeholders from SCAG's Equity Working Group and Technical Working Group, staff propose an updated method for defining Priority Equity Communities to frame and focus the Equity Analysis on populations that have been historically marginalized and are susceptible to inequitable outcomes.

#### **DEFINING PRIORITY EQUITY COMMUNITIES:**

Staff propose replacing the three equity communities (i.e., Environmental Justice Areas, SB 535 Disadvantaged Communities, and Communities of Concern) with a new, flexible equity area definition, called Priority Equity Communities, to comply with statutory requirements and support SCAG equity efforts beyond the Plan. Priority Equity Communities are *census tracts in the SCAG region that have a greater concentration of populations that have been historically marginalized and are susceptible to inequitable outcomes based on several socioeconomic factors.*

Staff propose determining a census tract as a Priority Equity Community if there is a concentration above the county average of:

1. **BOTH** low-income households and people of color; **OR**
2. **EITHER** low-income households or people of color **AND** of four or more of the following:
  - i. Vulnerable Ages [Older adults (65+) or Young Children (<5)]
  - ii. People with Disabilities
  - iii. People with Limited English Proficiency
  - iv. Limited Vehicle and Transit Access [zero- and one-vehicle households not located near a High-Quality Transit Corridor]
  - v. People without a High School Diploma
  - vi. Single Parent Households
  - vii. Housing Cost Burdened Households [including homeowners and renters]

With the proposed approach, Priority Equity Communities cover 50 percent of the region's population. The counties of Orange (49.3%), Riverside (46.1%), and Ventura (44.7%) would have under half of their population in Priority Equity Communities.

#### *Existing Equity Area Definitions*

Recently, several federal, state and local agencies developed equity area definitions that cover all or part of the SCAG region. They defined these "equity areas," sometimes called Disadvantaged Communities, Priority Populations or Equity Focus Communities, to target analysis, investment and policy benefits in historically marginalized communities. Each equity area definition and

methodology differ to serve its own purpose, and as a result highlights different areas of the region. With the proposed definition of Priority Equity Communities, there are significant spatial overlaps with the following equity area definitions:

- Disadvantaged Communities per Climate and Economic Justice Screening Tool, US Council on Environmental Quality
- Disadvantaged Communities per *[draft]* Equitable Transportation Community Explorer, US Department of Transportation (DOT)
- Transportation Disadvantaged Census Tracts<sup>4</sup>, US DOT
- SB535 Disadvantaged Communities per CalEnviroScreen 4.0, California Environmental Protection Agency and California Office of Environmental Health Hazard Assessment
- Priority Populations per *[draft]* Transportation Equity Index, Caltrans
- Transportation Equity Zones, SCAG
- Equity Focus Communities, Los Angeles County Metropolitan Transportation Authority

Note that there are several other data/mapping tools available to support equitable decision-making that do not specify a methodology for defining equity areas.

In partnership with several stakeholders, including community-based organizations, SCAG developed Transportation Equity Zones (TEZs) with the Mobility Innovations and Pricing Report (March 2022) to identify “areas that currently experience transportation-related burdens and may face disproportionate impacts from future mobility innovations.” Thus, staff propose using TEZs instead of Priority Equity Communities in the Equity Analysis only when evaluating impacts of mobility pricing strategies, like mileage-based user fees. This approach validates TEZs as an equity area definition that was developed with community input for a specific purpose, while still meeting statutory requirements.

#### **EQUITY PERFORMANCE MEASURES:**

As presented in September 2022, SCAG staff recommends several overarching enhancements to the performance measures, including incorporating data from the most recently available data sources, adding analysis from the Racial Equity Baseline Conditions Report, aligning demographics analyzed across performance measures, and incorporating disaggregated results where possible. To improve readability of the report, staff recommend consolidating measures to reduce redundant context, and focusing on the key takeaways from the analysis.

Based on feedback from EEC members at the September 1, 2022 and further discussion with subject-matter experts, staff modified methodologies for some of the Equity Performance Measures, including:

---

<sup>4</sup> To be retired upon adoption of US DOT’s new tool.

- Revising the neighborhood change definition to identify *gentrifying neighborhoods*, or census tracts that were initially low-income and had significant increase in college-educated residents over a given time period, and adding an assessment of eviction filings to **Neighborhood Change and Displacement**
- Several changes to **Access to Everyday Destinations**:
  - Adding schools and health care facilities as destinations
  - Adding walking and biking access analysis
  - Removing bus-only transit analysis while maintaining all-transit analysis
  - Revising travel cost thresholds and park and retail access metrics based on a literature review
- Adding drought and earthquake hazard zones to **Resilience and Climate Vulnerabilities**

Attachment 1 (Proposed Equity Performance Measures) includes an updated list of the performance measures with definitions and the proposed changes in detail.

**NEXT STEPS:**

SCAG's Priority Equity Communities and Equity Performance Measures will be shared with the public through the Connect SoCal outreach workshop scheduled for April and May 2023. Through this outreach, staff aims to ground truth the Priority Equity Communities and assess the public's priorities on regional equity issues. Staff will return to the EEC to provide updates on the Connect SoCal 2024 Equity Analysis and any input received during the public outreach process. SCAG will continue to explore opportunities to incorporate Priority Equity Communities in planning practices and to advance equity through the policies and strategies in the plan.

**FISCAL IMPACT:**

Work associated with this item is included in the Fiscal Year 2022-2023 Overall Work Program (020.0161.06: Environmental Justice Outreach and Policy Coordination).

**ATTACHMENT(S):**

1. Proposed Equity Performance Measures (March 2023)
2. PowerPoint Presentation - Equity Analysis Update



# Connect SoCal 2024

## Draft Performance Measures: Equity\*

Category	Subcategory**	Performance Measures	Plan Evaluation Measure***	Definition	New, Existing, Revised, Removed	Changes/Notes
Economy	Revenue Sources In Terms of Tax Burdens	Proportion of Connect SoCal revenue sources		Proportion of Connect SoCal revenue sources (taxable sales, income, and gasoline taxes) generated from low income households and people of color	Revised	Adding racial/ethnic disaggregation
Economy	Investments vs. Benefits	Transportation system investment benefit/cost ratio	X	Analysis of Connect SoCal investments by income quintile and race/ethnicity	Existing	Continue to 2024.
Economy	Geographic Distribution of Transportation Investments	Geographic distribution of transportation investments by mode	X	Evaluation of Connect SoCal transit, roadway, and active transportation infrastructure investments in various communities throughout the region	Existing	Continue to 2024.
Economy	Impacts from Mileage-Based User Fees (MBUF)	MBUF impacts		Examination of potential impacts from implementation of a mileage-based user fee on low income households and people of color in the region	Revised	Adding racial/ethnic disaggregation
Communities	Jobs-Housing Imbalance	Jobs-house balance		Comparison of median earnings for intra-county vs intercounty commuters for each county; analysis of relative housing affordability and jobs throughout the region	Revised	Adding racial/ethnic disaggregation
Communities	Neighborhood Change and Displacement	Neighborhood change trends		Examination of demographic changes within gentrifying neighborhoods	Revised	Adding racial/ethnic disaggregation; Added gentrifying neighborhoods definition
Communities	Neighborhood Change and Displacement	Eviction filings		Examination of eviction filings and households threatened with eviction within gentrifying neighborhoods	New	
Communities	Rail-Related Impacts	Proximity to rail corridors	X	Demographic analysis for areas in close proximity to rail corridors	Revised	
Communities	Rail-Related Impacts	Proximity to planned grade separations	X	Demographic analysis for areas in close proximity to planned grade separations	Revised	
Communities	Rail-Related Impacts	Proximity to railyards	X	Demographic analysis for areas in close proximity to railyards	New	
Mobility	Access to Everyday Destinations	Job access	X	Number of employments reachable within 15/30 minutes by automobile and 15/45 minutes by transit during morning peak period (6 - 9 a.m.), plus 0.5- 0.75-, and 1-mile walksheds and 1-, 3-, and 5-mile bikesheds	Revised	Added walkshed and bikeshed analyses; Removing bus-only transit analysis
Mobility	Access to Everyday Destinations	Shopping access	X	Number of retail establishments reachable within 15/30 minutes by automobile and 15/30 minutes by transit during morning peak period (6 - 9 a.m.), plus 0.5- 0.75-, and 1-mile walksheds and 1-, 3-, and 5-mile bikesheds	Revised	Added walkshed and bikeshed analyses; Removing bus-only transit analysis; Redefined transit travel time cost threshold; Revised access metric from number of retail employments
Mobility	Access to Everyday Destinations	Parks access	X	Percent of population that can reach a park location within 15/30 minutes by automobile and 15/30 minutes by transit during morning peak period (6 - 9 a.m.), plus 0.5- 0.75-, and 1-mile walksheds and 1-, 3-, and 5-mile bikesheds	Revised	Added walkshed and bikeshed analyses; Revising access metric from park acreage
Mobility	Access to Everyday Destinations	School access	X	Number of schools within 15/30 minutes by automobile and 15/30 minutes by transit during morning peak period (6 - 9 a.m.), plus 0.5- 0.75-, and 1-mile walksheds and 1-, 3-, and 5-mile bikesheds	New	
Mobility	Access to Everyday Destinations	Health care access	X	Number of health care facilities within 15/30 minutes by automobile and 15/30 minutes by transit during morning peak period (6 - 9 a.m.), plus 0.5- 0.75-, and 1-mile walksheds and 1-, 3-, and 5-mile bikesheds	New	
Mobility	Bicycle and Pedestrian Collisions	Bike and pedestrian collisions		Percent of Bicycle/Pedestrian HINs that fall within Priority Equity Communities	Revised	Renaming from "Active Transportation Hazards"; adding overlay with High Injury Network
Mobility	Travel Time and Travel Distance Savings	Distribution of travel time	X	Assessment of comparative benefits received as a result of Connect SoCal investments by demographic group in terms of travel time for 30 minutes auto and 45 minute transit	Existing	Continue to 2024.
Mobility	Travel Time and Travel Distance Savings	Distribution of travel distance	X	Assessment of comparative benefits received as a result of Connect SoCal investments by demographic group in terms of travel distance savings for 30 minutes auto and 45 minute transit	Existing	Continue to 2024.
Mobility	Share of Transportation System Usage	Mode share	X	Comparison of transportation system usage by mode for low income households and people of color relative to each group's regional population share	Existing	Continue to 2024.
Environment	Resilience and Climate Vulnerabilities	Climate risk areas	X	Assessment of overlay between Priority Equity Communities and Climate Risk Areas, including flood hazard zones, sea level rise, wildfire risk, substandard housing, extreme heat, drought, and earthquake hazard zones	Revised	Renaming from "Climate Vulnerability" indicators; Adding extreme heat, drought, and earthquake hazard zones
Environment	Emissions Impacts Analysis	Emissions impacts (CO and PM2.5)	X	Examination of change in air pollutant emissions region-wide as a result of the Plan in region and Priority Equity Communities	Existing	
Environment	Emissions Impacts Analysis	Proximity to freeways and highly traveled corridors	X	Examination of change in air pollutant emissions, focusing on demographics of areas in close proximity to freeways and highly traveled corridors, as a result of the Plan in region and Priority Equity Communities	Revised	Combining "Emissions Impacts Along Freeways and Highly Traveled Corridors" indicator into the "Emissions Impact Analysis"
Environment	Noise Impacts	Roadway Noise		Qualitative assessment of the disproportionate impacts of roadway noise impacts and the policies, programs, and plans to address project-level impacts	Revised	Combining with "Aviation Noise Impacts"; Shifting to qualitative analysis
Environment	Noise Impacts	Aviation Noise		Qualitative assessment of the disproportionate impacts of aviation noise impacts and the policies, programs, and plans to address project-level impacts	Revised	Combining with "Roadway Noise Impacts"
Environment	Public Health	N/A		Summary of historical emissions and health data for areas with high concentrations of minority and low income population	Removed	Public health topics (e.g., life expectancy, health insurance, and health risks) are incorporated throughout the Equity Analysis

\*Formerly referenced as "Environmental Justice (EJ)"

\*\*Subcategories are different from the Draft Performance Measures subcategories to account for alignment with previous EJ Analysis Measures.

\*\*\*Plan Evaluation Measures are metrics that involve modeling outcomes to forecast regional performance with and without the implementation of the Plan. All other measures are "on-going" measures used to assess progress being made over time.



## Equity Analysis Update

Anita Au and Annaleigh Ekman

April 6, 2023

## Key Definitions



### Environmental Justice

The fair treatment and meaningful involvement of all people regardless of race, color, national origin, or income, with respect to the development, implementation, and enforcement of environmental laws, regulations, and policies.

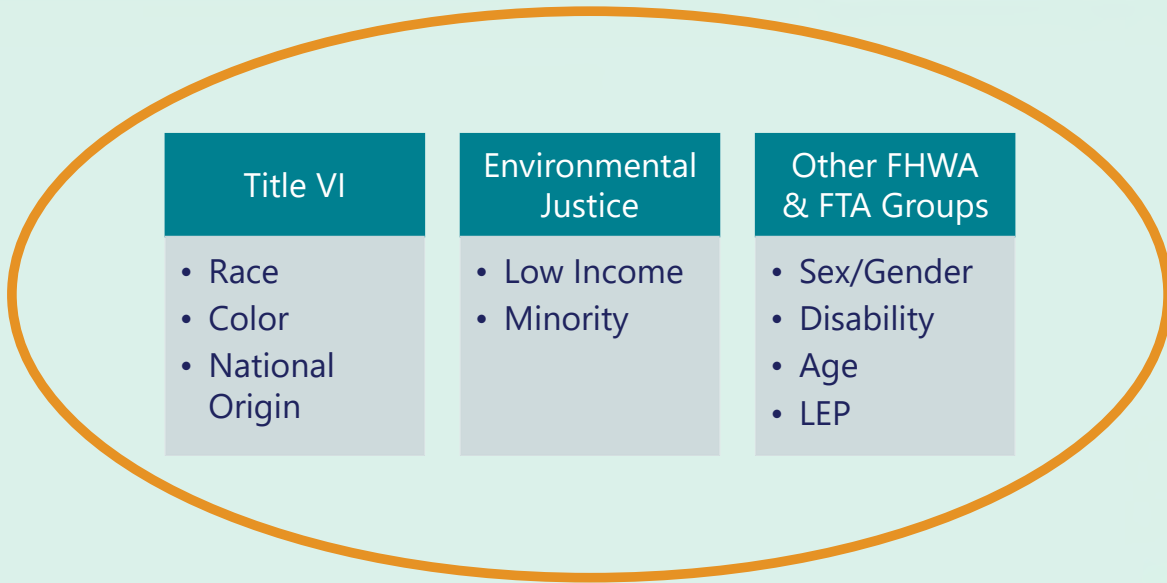
### Racial Equity

As central to SCAG's work, racial equity describes the actions, policies, and practices that eliminate bias and barriers that have historically and systemically marginalized communities of color, to ensure all people can be healthy, prosperous, and participate fully in civic life.

# Incorporating Equity into Analysis



## EQUITY

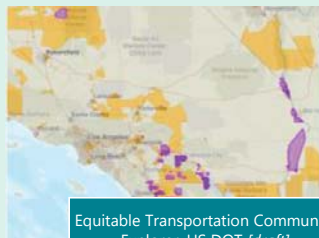


3

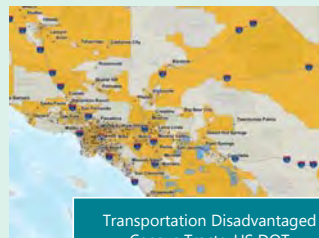
# Existing Equity Area Definitions



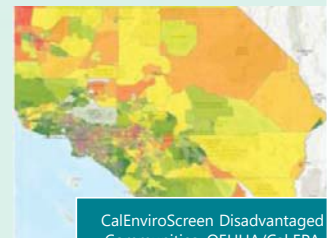
Climate and Economic Justice Screening Tool, Council on Environmental Quality



Equitable Transportation Community Explorer, US DOT *[draft]*



Transportation Disadvantaged Census Tracts, US DOT



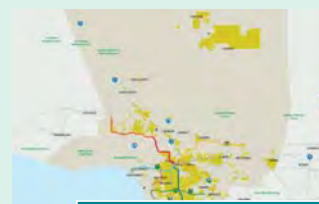
CalEnviroScreen Disadvantaged Communities, OEHA/Cal EPA



Transportation Equity Index, Caltrans *[in development]*



Transportation Equity Zones, SCAG



Equity Focus Communities, LA Metro

Note: TEZs to be used in pricing discussion in Equity Analysis

4

Attachment: PowerPoint Presentation - Equity Analysis Update (Equity Analysis Update - Priority Equity Communities)

# Priority Equity Communities

## Priority Equity Communities

### Definition

Priority Equity Communities are census tracts in the SCAG region that have a greater concentration of populations that have been historically marginalized and are susceptible to inequitable outcomes based on several socioeconomic factors.

# Priority Equity Communities

## Definition



Priority Equity Communities are census tracts in the SCAG region that have a greater concentration of populations that have been historically marginalized and are susceptible to inequitable outcomes based on several socioeconomic factors.

7

# Priority Equity Communities

## Definition



Priority Equity Communities are census tracts in the SCAG region that have a greater concentration of populations that have been historically marginalized and are susceptible to inequitable outcomes based on several socioeconomic factors.

8



# Priority Equity Communities

## Definition



Priority Equity Communities are census tracts in the SCAG region that have a greater concentration of populations that have been historically marginalized and are susceptible to inequitable outcomes based on several socioeconomic factors.

# Priority Equity Communities



Census tracts that have a concentration **above county average** of:

A.  People of Color &  Low-Income Households

B.  People of Color **OR**  Low-Income Households

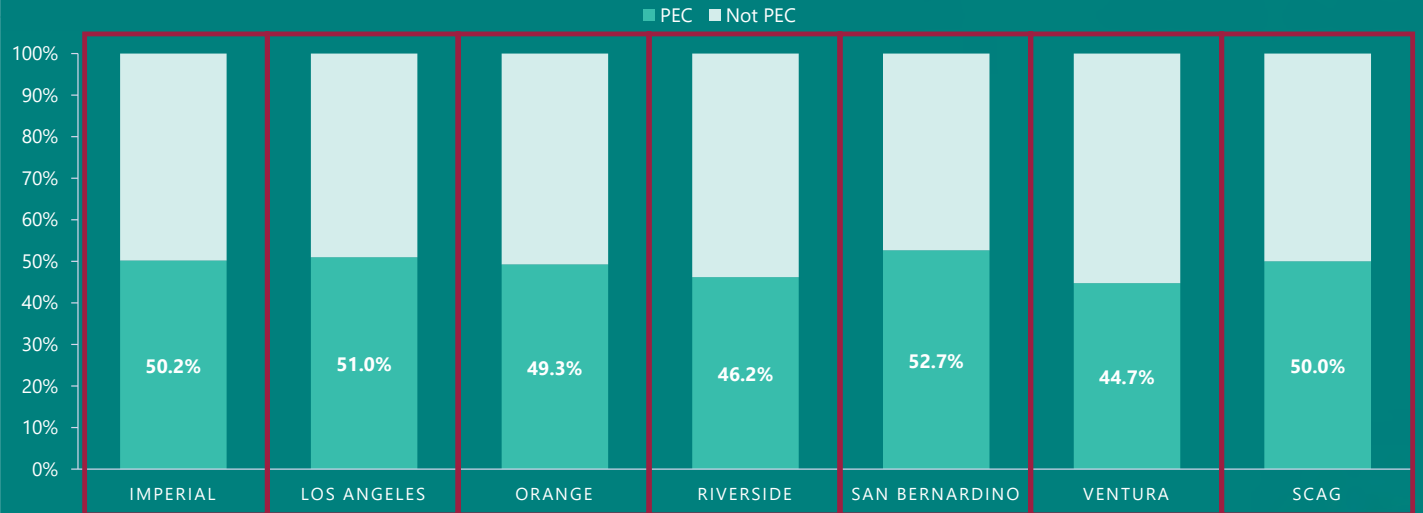
**AND** 4+ of the 7 other priority population criteria:

 Limited Vehicle and Transit Access	 Vulnerable Ages	 Single Parent Households
 People without a High School Diploma	 People with Disabilities	 Housing Cost Burdened Households
 People with Limited English Proficiency		

# Priority Equity Communities Identification



## PERCENT OF POPULATION IN PRIORITY EQUITY COMMUNITIES (PEC)



# Equity Performance Measures

# Equity Performance Measures



## Economy

- Geographic Distribution of Transportation Investments
- Investments vs. Benefits
- Revenue Sources In Terms of Tax Burdens
- Impacts from Mileage-Based User Fee

## Communities

- Jobs-Housing Imbalance
- Neighborhood Change and Displacement
- Rail-Related Impacts

## Mobility

- Share of Transportation System Usage
- Travel Time and Travel Distance Savings
- Access to Everyday Destinations
- Bicycle and Pedestrian Collisions

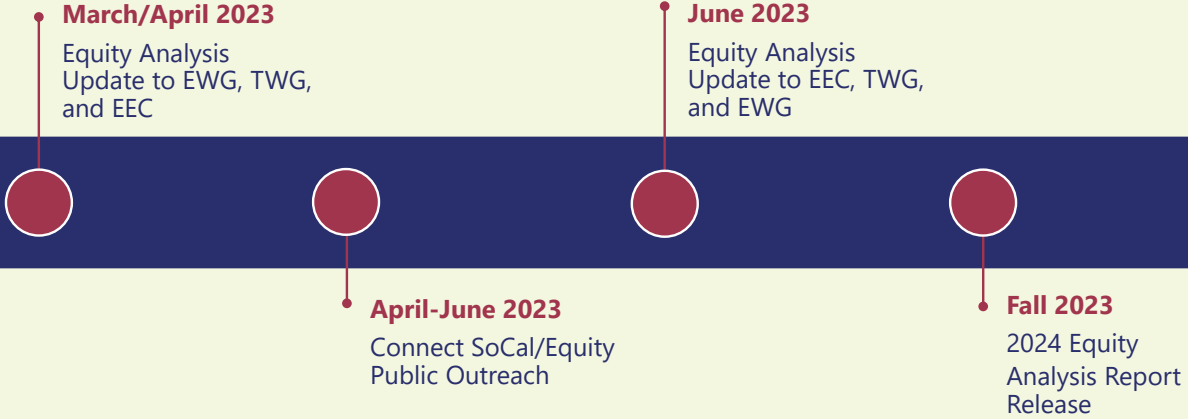
## Environment

- Resilience and Climate Vulnerabilities
- Emissions Impacts Analysis
- Noise Impacts

13

# Next Steps

# Timeline



# Questions? Comments?

FOR MORE INFORMATION, PLEASE VISIT  
[SCAG.CA.GOV/CONNECT-SOCAL](http://SCAG.CA.GOV/CONNECT-SOCAL)





AGENDA ITEM 6  
REPORT

Southern California Association of Governments  
April 6, 2023

To: Community, Economic and Human Development Committee (CEHD)

EXECUTIVE DIRECTOR'S  
APPROVAL

From: Grieg Asher, Planning Supervisor  
(213) 236-1869, asher@scag.ca.gov

Subject: Connect SoCal: 15-Minute Communities

**RECOMMENDED ACTION:**

Information Only – No Action Required

**STRATEGIC PLAN:**

This item supports the following Strategic Plan Goal 2: Advance Southern California’s policy interests and planning priorities through regional, statewide, and national engagement and advocacy.

**EXECUTIVE SUMMARY:**

*In June 2022 the Regional Council adopted the Policy Development Framework for Connect SoCal 2024, and through this framework staff committed to bringing forward policies and strategies to SCAG’s Policy Committees to support development of the plan. Through the CEHD Lookahead, staff outlined a number of broad policy concepts to explore in the development of the Land Use Strategies Technical Report that will be part of Connect SoCal 2024, including the concept of the “15-minute community”. A panel discussion will explore the broader concept as well as specific strategies that could fit into Connect SoCal 2024’s land use strategies technical report.*

**BACKGROUND:**

In June 2022 the Regional Council adopted the Policy Development Framework for Connect SoCal 2024, and through this framework staff committed to bringing forward policies and strategies to SCAG’s Policy Committees to support development of the plan. Through the CEHD Lookahead, presented in September 2022 and updated monthly, staff has outlined a number of broad policy concepts to explore in the development of the Land Use Strategies Technical Report that will be part of Connect SoCal 2024. This staff report and panel presentation will introduce the concept of the 15-minute community as a core concept to be included in the Land Use Strategies Technical Report.

A 15-minute community is one in which you can access all of your most basic, day-to-day needs within a 15-minute walk or bike ride of your home. For SCAG’s purposes, the 15-minute community

includes access to day to day needs through a range of mobility options that create opportunities to reduce single occupant vehicle trips. It is an aspirational framework for making our cities more inclusive, more equitable, and thereby more effective.

The 15-minute community concept has been identified for consideration because the concept can apply broadly to many types of communities across the SCAG region and touches on a number of land use and policy goals integral to realizing the growth vision in Connect SoCal. More specifically, the 15-minute community:

1. Can exist in different place types, from rural to suburban and urban when the general principles and policies are applied.
2. Can be realized through day-to-day incremental neighborhood changes as well as master planned communities.
3. Have many health and quality of life benefits such as: less commute time, allowing people to have more free time at their disposal; physical and mental health benefits of active travel, cleaner air, easy access to healthy food options, quality green space, and stronger community ties that reduce loneliness.
4. Promotes sustainable and active transportation modes, and by its nature reduces the carbon footprint of residents by reducing the need for long trips. Walkable, accessible neighborhoods can also benefit older people who may lack the physical ability or income to make longer trips.
5. Is designed to help access-focused urban transformations be what we need them to be: ambitious, inclusive, measurable, and effectively implemented.

The policies that staff will explore align with best practices for realizing a 15-minute community and focus on ways that a neighborhood can be connected internally to local places and amenities, as well as externally to larger regional centers, job centers or other destinations.

#### **DISCUSSION PANEL:**

The panel discussion on 15-Minute Communities will feature three different presenters: ARUP, the South Bay Cities Council of Governments (SBCCOG), and the Livable Communities Initiative (LCI).

- **ARUP:** Chris Pountney is Associate Director of Arup's London office, specialising in decarbonisation, energy transition and sustainability. Chris was a co-author of the Green and Thriving Neighbourhoods Guidebook produced in partnership with C40 Cities. The guidebook features case studies of 15-minute communities from a wide-range of global cities. Since the guidebook was launched in 2021, Chris has been working to apply the approaches in different global regions, including Europe, Asia and Australia. New training for city decision-makers is currently in production through a collaboration with UNEP and C40 Cities designed to enable the wide-spread adoption of green and thriving neighbourhoods.

- ***South Bay Cities Council of Governments:*** Jackie Bacharach is the Executive Director of SBCCOG and Wally Siembab is the SBCCOG’s Research Director, where he leads housing, sustainability, mobility, and land use programs for the SBCCOG. Their work creates more inclusive, affordable, sustainable, connected, and vibrant neighborhoods. They are committed to accelerating strategic goals including resilience, digital equity and commercial revitalization.
  
- ***Livable Communities Initiative:***
  - Lindsay Sturman is the co-host of the podcast Bike Talk and the co-founder of the Livable Communities Initiative (LCI), a plan to support housing along livable streets near transit while addressing mobility, traffic and climate. She is a housing, mobility and climate activist and active member of the LA civic group Hang Out Do Good (HODG), and a TV Writer/Producer.
  
  - Eduardo Mendoza is the policy director for the LCI and a city planner based in Los Angeles. Mendoza received his Master’s in Planning from USC. He is a current board member for Abundant Housing Los Angeles c(3) and c(4), he is the acting Board Chair for Inclusive Santa Monica. He is also a demographer who has worked with Children's Hospital Foundation, Lucile Packard Foundation, Haynes Foundation and whose work has been featured on publications such as Cityscape, Slate, and the Wall Street Journal.

Staff will continue to bring forward different land use strategies to the CEHD for consideration and to inform the ongoing development of the land use and policy goals integral to realizing the growth vision in Connect SoCal.

#### **FISCAL IMPACT**

Staff’s work budget and funding for 15-minute Communities are included in the FY 2023-2024 Overall Work Programs (OWP) 290-4915.01 – Connect SoCal.

#### **ATTACHMENT(S):**

1. PowerPoint Presentation - SCAG -Livable Communities Initiative 2spp
2. PowerPoint Presentation - SCAG 15 Min City\_Arup and C40 Cities 2spp





Aesthetics/  
Neighborhood  
Character



Height



Traffic



Gentle Density  
3-5 Stories



Beautiful  
Architecture



Walkable  
Near Transit





Zillow

Save Share

**\$7,200,000** 5 bd | 7 ba | 5,200 sq

123 W Via Mari, Marina Del Rey, CA 90292

For sale | Zestimate®: None

Est. payment: \$36,527/mo [Get pre-qualified](#)

**Housing Math:**

\$7.2 million – 4 Story, 7 baths

Build for: \$500/sqft

Sells for: \$1385 /sqft

4 Stories  
7 baths  
\$7.2m SFH Spec house



4 Stories  
7 baths  
7 units

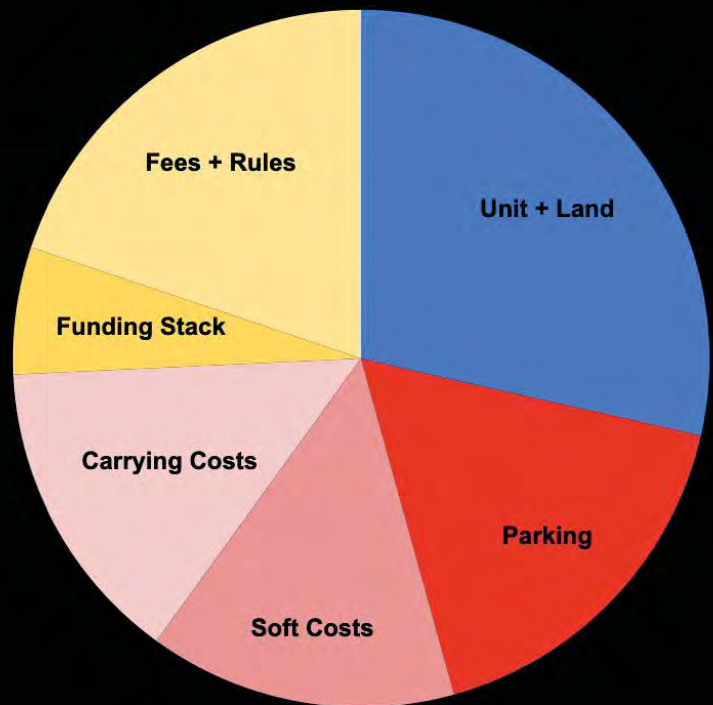


We need: 456,000 units

Cost: \$566k

Time: 4-7 years

Why: Zoning



Data Source: Turner Center, UC Berkeley; real projects in LA

# Key Strategies

- Better Buildings through Better Code
- Standard Plans
- Safe Streets



# The LCI Plan: What laws and policies have to change?

## Zoning and development standards:

- Adopt FAR and Height standards for mixed income and affordable units on smaller parcels
- Modify how we calculate private/public space requirements for smaller parcels
- Improve our green open space requirements
- Incentivize parking-lite or free developments

## Affordability:

- Leveraging existing or creating new inclusionary housing policies to ensure some covenanted affordability in all new developments
- Disincentivize luxury unit layouts
- Incentivize variety of unit sizes eg. family sized units eg. two beds one bath and not roommate multi-bedroom apartments.
- Advocating for policies to protect commercial tenants

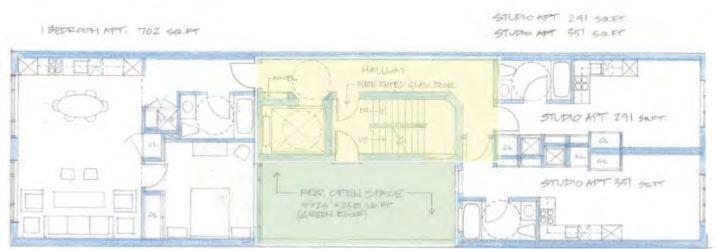
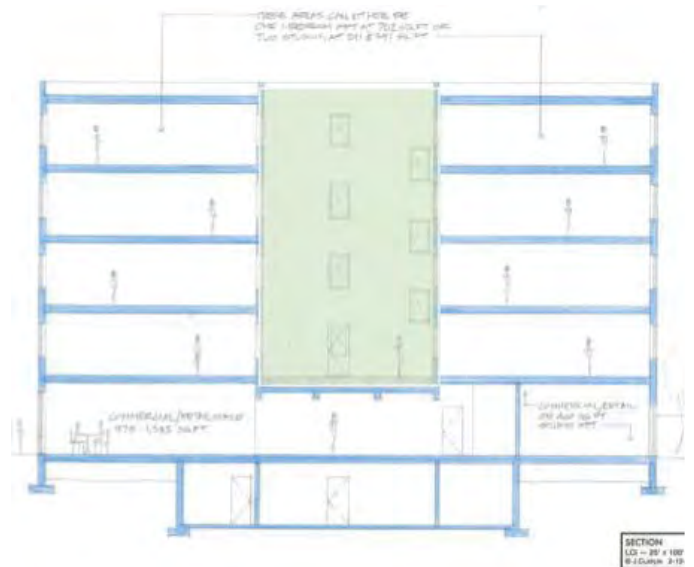
## Building Code:

- Utilizing New York/East Coast, Seattle eg egress and circulation standards.
- Increasing fire code standards to ensure higher survivability for people who are unable to exit buildings through stairways in case of fire.

## Permitting:

- Streamline permitting process to allow for mom and pop developers to enter without over complicated processes
- Modify fee structure to accommodate smaller footprint buildings
- Improve utilities permitting process

## Vertical Shared Access Reform

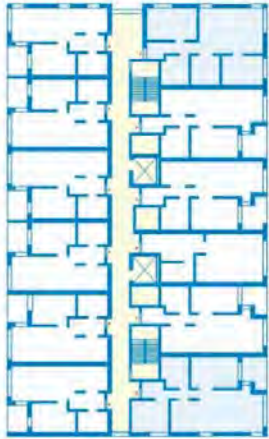


### Double Loaded Corridor:

12-unit double loaded corridor.

**13% non-leasable space**

Units facing the street are always noisier, lack acoustic privacy, too much or too little sunlight, requires more land to justify building. Least amount of unit diversity, unorthodox layouts eg. kitchen at entrance.



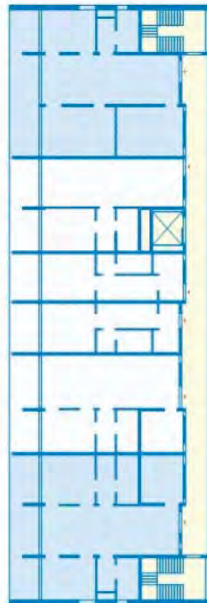
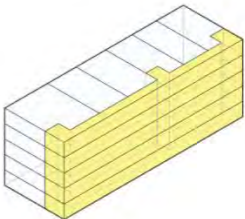
Double Loaded Corridor

### Single Loaded:

6-unit single loaded corridor.

**16.5% non-leasable space**

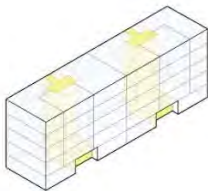
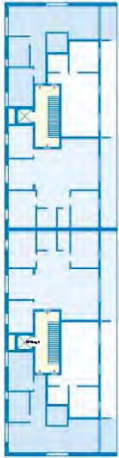
- External corridor access can often look unattractive and feel uncomfortable or unsafe on tall buildings.
- Least efficient use of livable floor-space.



Single Loaded Corridor

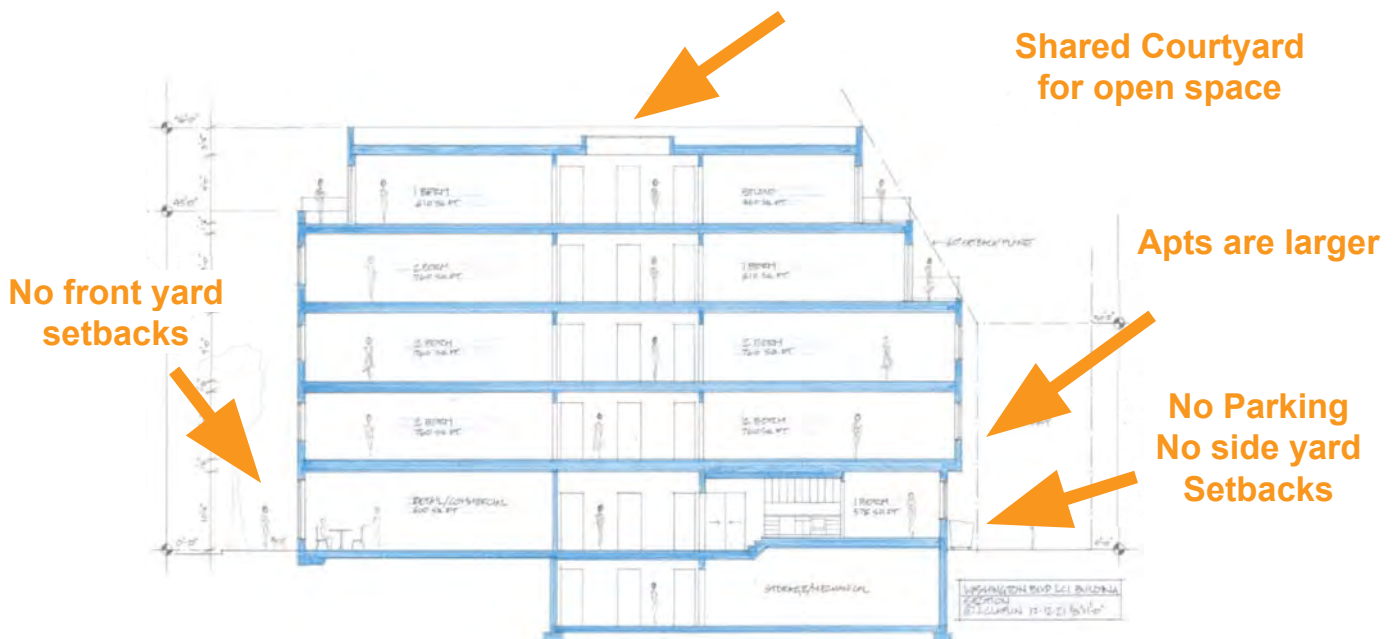
**Courtyard Buildings**  
 6-unit point access block.  
 6.5% non-leasable space

- Multiple core layout creates dual aspect apartments with better daylight access and cross ventilation.
- Diverse unit layouts that encourage greater acoustic privacy.
- Encourages interaction and recognition between residents to contribute to a sense of community and improve perceptions of safety.

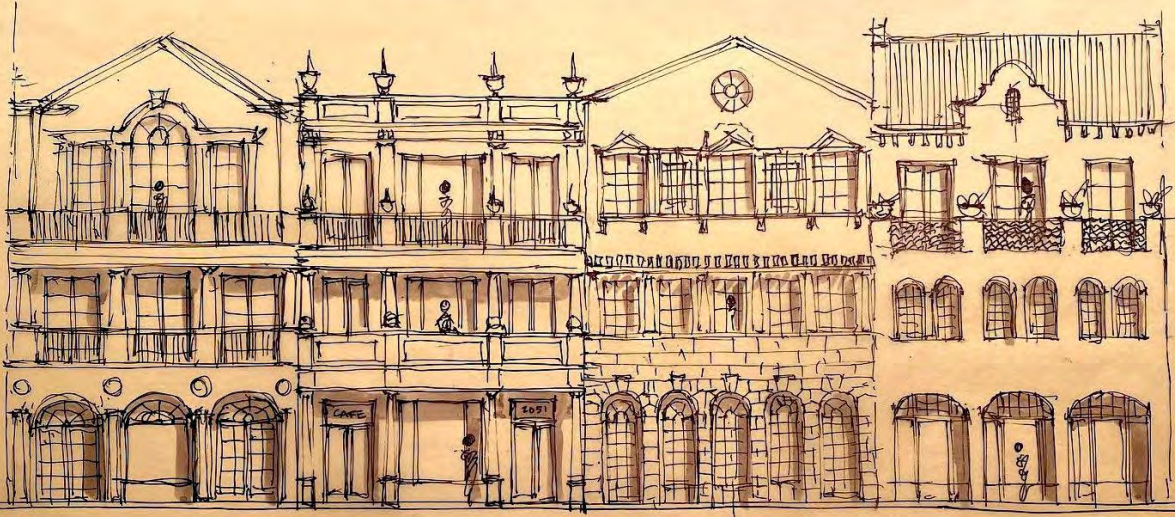


Courtyard Building  
 Pali Hotel, Culver City

**Vertical Core Design**

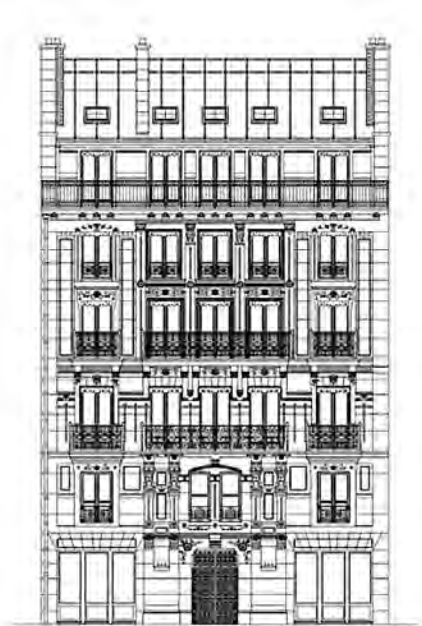


# Standard Plans

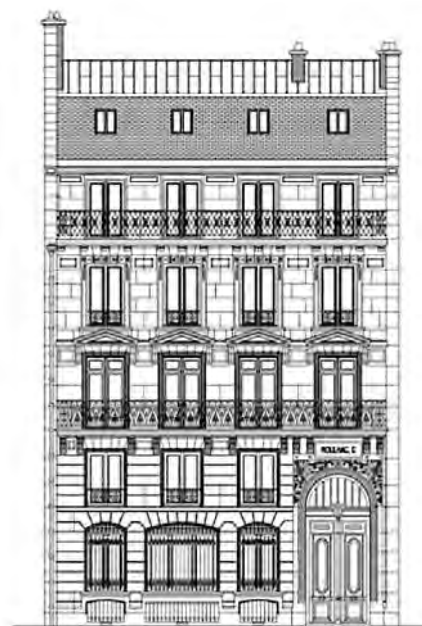




# Standard Plans



9 RUE DU CONSERVATOIRE



11 BOULEVARD SEBASTOPOL



140 RUE DE LA FAYETTE

Varied Economic & Architectural Models





Neighborhood  
picks a  
Vernacular



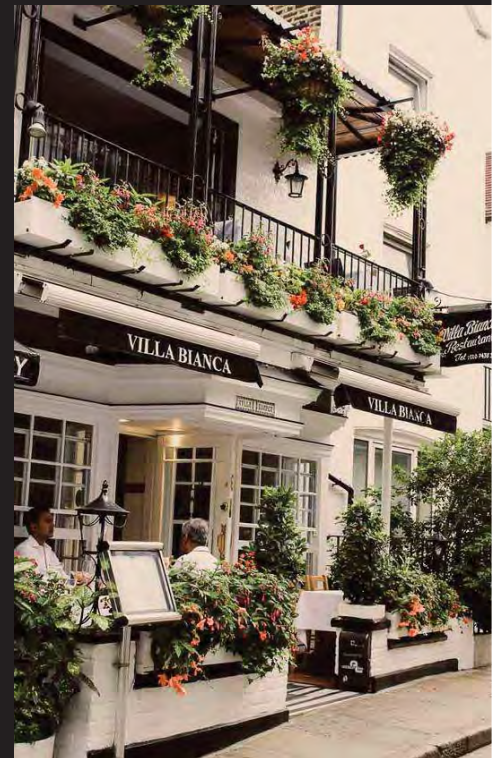
Venice



# Abbot Kinney



# Santa Monica



# Beverly Hills



# Westwood Village Historic Preservation Infill Plan

Attachment: PowerPoint Presentation - SCAG - Livable Communities Initiative 2spp (Connect SoCal: 15-Minute Communities)



# Safe Streets



These are not the same





HIT BY A VEHICLE  
TRAVELING AT:

**20  
MPH**



9 out of 10 pedestrians survive

HIT BY A VEHICLE  
TRAVELING AT:

**30  
MPH**



5 out of 10 pedestrians survive

HIT BY A VEHICLE  
TRAVELING AT:

**40  
MPH**



Only 1 out of 10 pedestrians survive

**The only safe speed for kids is 9mph**



Canta LX



Attachment: PowerPoint Presentation - SCAG - Livable Communities Initiative 2spp (Connect SoCal: 15-Minute Communities)



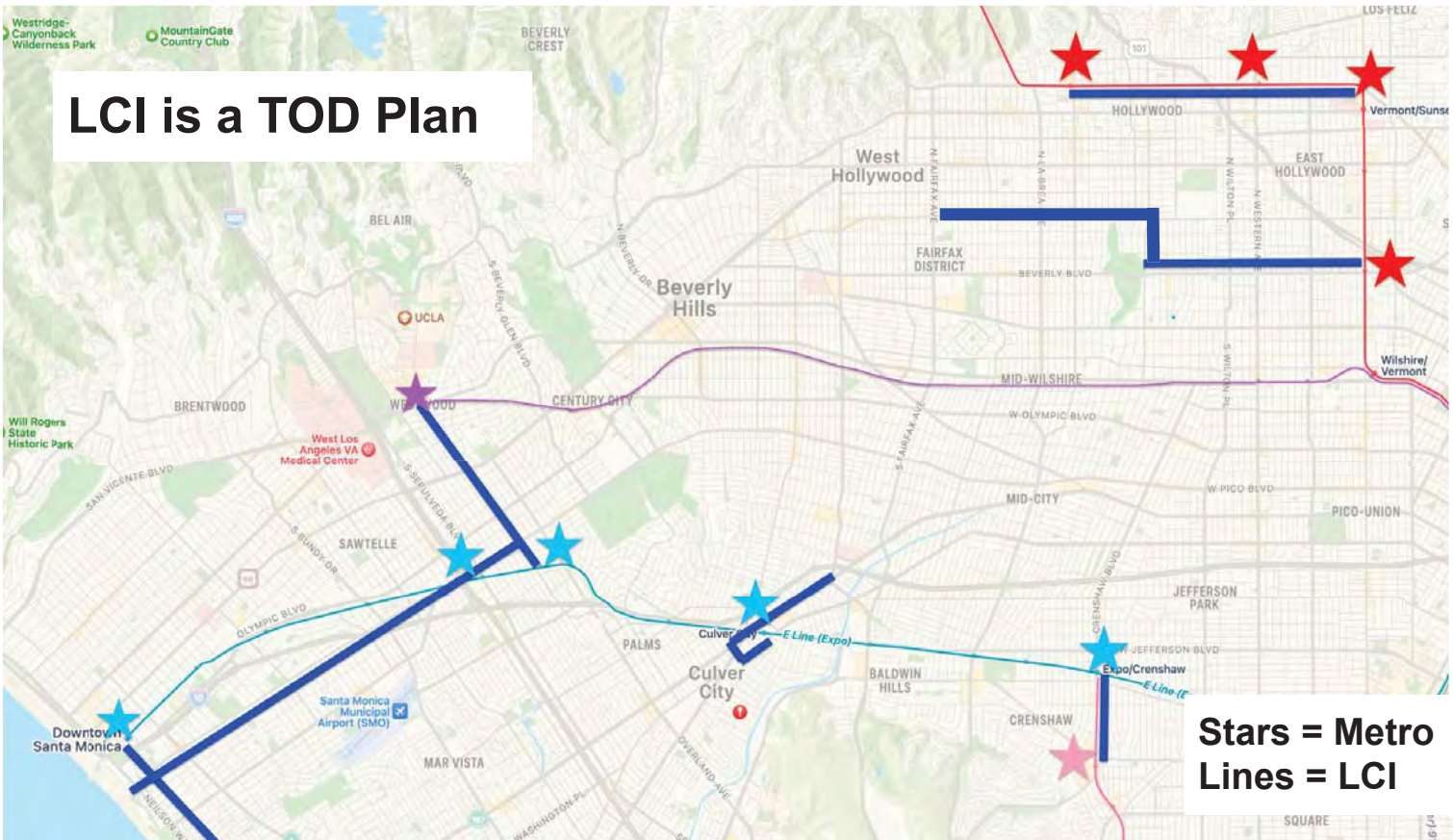
Attachment: PowerPoint Presentation - SCAG - Livable Communities Initiative 2spp (Connect SoCal: 15-Minute Communities)



**Historic Main Streets  
for walkability**



Attachment: PowerPoint Presentation - SCAG - Livable Communities Initiative 2spp (Connect SoCal: 15-Minute Communities)



LCI is a TOD Plan

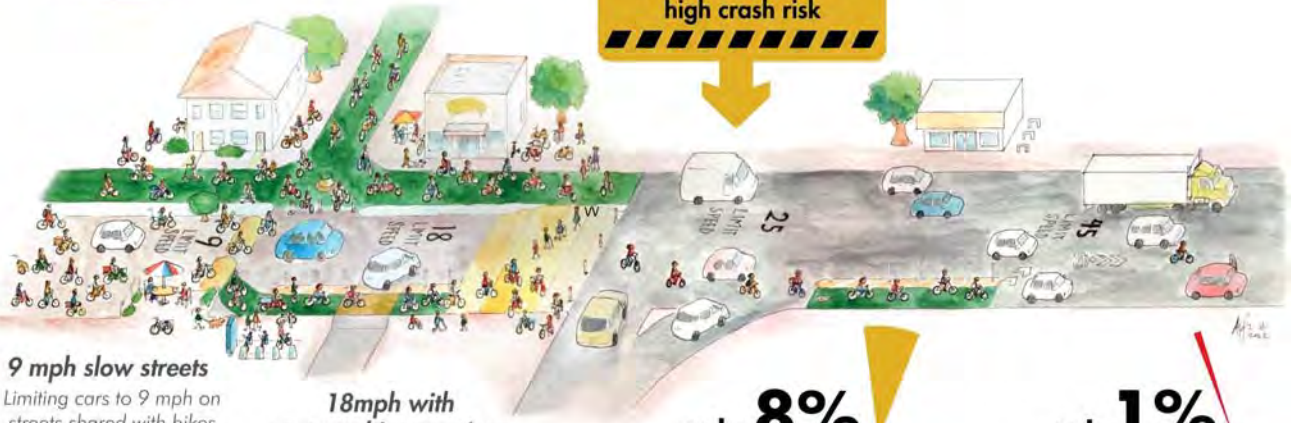
Stars = Metro Lines = LCI

# The Secret to Happy, Bikeable Streets

**80%**

will bike when continuous protected lanes or slow streets are available

**PINCH POINT**  
a gap in the protected bike network with a high crash risk



**9 mph slow streets**  
Limiting cars to 9 mph on streets shared with bikes ensures that almost all crashes are survivable.

**18mph with protected intersections**  
Raised tables and 90-degree turns keep speeds low where cars cross bike lanes.

only **8%** will cross a pinch point, even if protected lanes exist on the other side

only **1%** will bike on any road



Passive design, high ceilings, thick walls minimizes AC + heat

Zero Carbon Ready, Solar panels, Water recycling

A walkable, bikeable street near transit  
No parking

Sustainable building materials

Tree canopy, Bioswales



# The Civic City

*Housing*

*Climate*

*Traffic*

*Equity*

# The LCI Plan

Standard Plans + Child-Safe Streets

*Jobs*

*Healthy*

*Pocketbooks*

*Relaxed SoCal Life*



Attachment: PowerPoint Presentation - SCAG - Livable Communities Initiative 2spp (Connect SoCal: 15-Minute Communities)

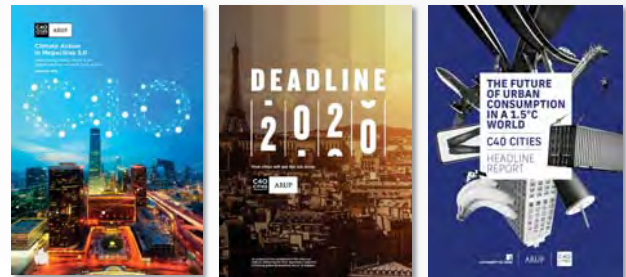
# SCAG Panel: Introducing the 15-minute city

Christopher Pountney

## About us

### Arup & C40 Cities partnership

Arup has worked with C40 since 2009 to develop strategic analysis and research that is central to progressing our understanding of how cities contribute to climate change mitigation and adaptation. The partnership supports a strong analytical research agenda while helping city actors to identify opportunities, collaborate and develop deliverable solutions to accelerate and expand action on climate change.





# The neighbourhood opportunity

**We must harness a model for low-carbon urban development that is human-scale, thriving and inclusive for our future.**



**Horacio Rodríguez Larreta**  
Mayor of Buenos Aires  
Vice-Chair of C40 Cities



**The neighbourhood scale in a city offers some unique opportunities to accelerate towards net zero.**



**Anna König Jerlmyr**  
Mayor of Stockholm  
Vice-Chair of C40 Cities



## Unique opportunities



**Raise ambition**  
**Drive change**

# Taking a holistic approach

## Green and thriving neighbourhoods

### **Net zero**

**Minimize emissions** throughout the project **lifecycle** and achieve **net zero** by counteracting any **residual emissions** in a **robust and transparent** way.

### **Resilient, people-centered**

Meet the **essential needs** of people at the neighbourhood scale. Support **'human scale' local life** which encourages healthy, sustainable lifestyles.

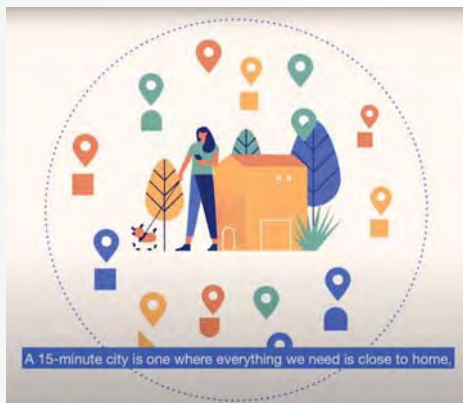
**A green and thriving neighbourhood should enable residents of all ages, backgrounds and abilities to meet their daily needs close to home.**



Anne Hidalgo  
Mayor of Paris  
Former chair of C40 Cities



## Core concept: 15-minute city

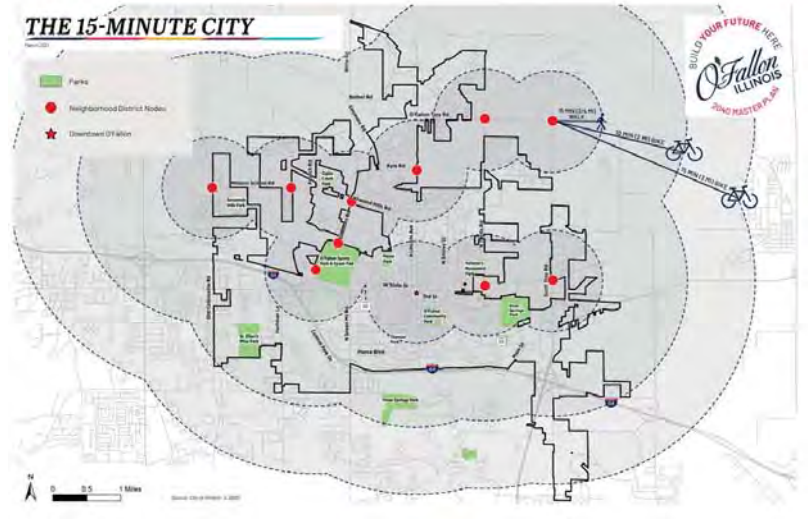


<https://www.youtube.com/watch?v=McGyONofhi4&t=5s>

## Example – O’Fallon, IL

# OUR ORGANIZING CONCEPT: THE 15-MINUTE CITY

What if we strengthened all the good things about O’Fallon and had more time to enjoy them?



## 15-minute cities



### 1. Complete neighbourhood

Prioritise local life where people access what they need within a short walk or bike ride



### 2. People-centred mobility

Encourage active travel with well-designed spaces, infrastructure and services



### 3. Connected place

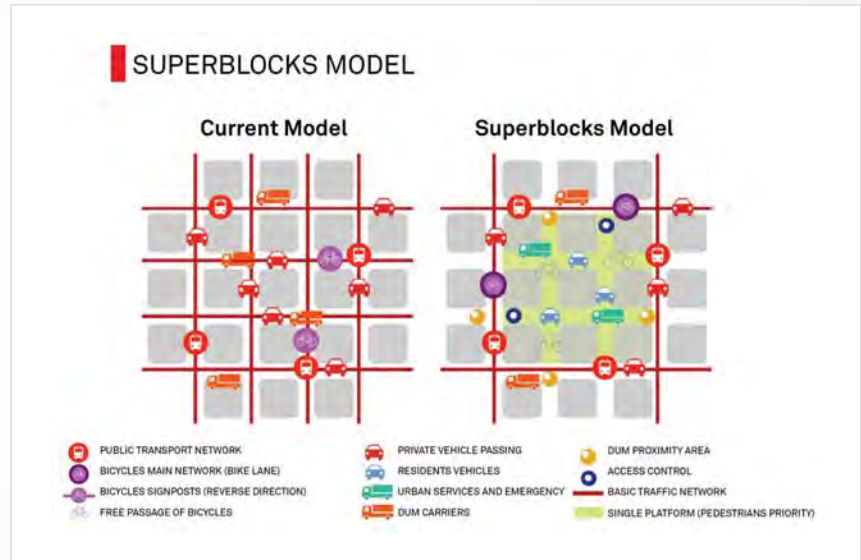
Enhance city-wide connectivity with stronger physical and digital links



### 4. A place for everyone

Tackle climate change, improve living standards and create better jobs for all

## Example – Barcelona



## Benefits for climate mitigation and adaptation

- Promoting people-centered streets and mobility **reduces transportation-related emissions and air pollution**
- Making the case for compact, mixed-used development and better use of the existing built environment **reduces buildings-related emissions**
- Equipping people with local facilities and services that makes sustainable choices easier and cheaper, contributes to **lower consumption-based emissions**
- Fostering green infrastructure and reclaiming parking spaces, contributes to **cooler temperatures in public spaces and reduce flooding risk**
- Reinforcing a sense of community where everyone has a place and by celebrating adaptable spaces that can be used by all residents, helps to build **more cohesive and resilient communities**

## Accelerator for climate action

- Helps build a vision that citizens and their leaders can strive for, as it sits right at the intersection between the political and the technical
- A timely approach for a green and just recovery from COVID-19, focusing on neighborhood-scale actions, improving quality of life, and economic revitalization



Scan to read our **guidebook** and find out more



## 1. Complete neighbourhood

- **Compactness and mixed-use** more suited to active travel, and key to make local services & transport infrastructures viable
- **Proximity and decentralisation of city life** to reduce the need to travel outside the neighbourhood and ensure equitable access to services and amenities
- **Activation of ground floors** to inject more life create pleasant and safe streets to walk in and support the local economy and retail
- **Adaptable spaces** to make the most of existing stock & concentrate activity avoid single-use buildings and foster flexible spaces that allow several uses



Paris

A semi-public agency dedicated to revitalizing local commerce and crafts within the city. One of their projects involves buying up abandoned shops and renting them at below market rates to local businesses and creatives that would otherwise not be able to afford the rent.





## 2. People-centred mobility

- **Good street design** to make walking and cycling the mode of choice
- **Reclaiming city spaces from private vehicles** to improve active travel and develop new uses for social and community-building
- **Tactical urbanism and temporary activation** to engage and inspire local residents



Milan

The Piazza Aperte program in Milan has been seeking to reclaim spaces in piazzas that were once dedicated to cars, using a range of temporary strategies. The approach relies on working with inhabitants to restyle their neighbourhoods through cheap and scalable spatial interventions.



## 3. Connected place

Because supporting local life does not mean isolation, it is vital to ensure each neighbourhood is connected to the rest of the city and beyond to enhance social and economic connectivity

- **Physically connected** accessibility & affordability of public transit to connect the neighborhood with other parts of the city
- **Digitally connected** enable more flexible working practices, reduce the unnecessary travel ensure



São Paulo

The City has developed a 'neighbourhood internet services', developing a network of comfortable neighbourhood working spaces with good internet access.

It aims to inject life into neighbourhood main streets and encourage people to work remotely.



## 4. Inclusive and cohesive community

- **A diverse mix of people** equal access to services and opportunities, including varied and affordable homes
- **Active community engagement** to understand the specific needs of different individuals and groups and support the transition to behavior change
- **Opportunities for social interaction** to tackle loneliness and build more resilient and cohesive communities
- **Anti-displacement policies**



### Los Angeles

The Watts' Transformative Climate Communities project is a community-driven vision to transform one of Los Angeles' most disadvantaged neighbourhoods.

The projects include affordable housing, low-carbon transport for residents, planting more than 3,300 trees, and development of amenities to respond to the needs of the community



AGENDA ITEM 7  
REPORT

Southern California Association of Governments  
April 6, 2023

To: Community, Economic and Human Development Committee (CEHD)

EXECUTIVE DIRECTOR'S  
APPROVAL

From: Gigi Moreno, Senior Economist  
(213) 630-1408, gmoreno@scag.ca.gov

Subject: Economic Update: Job Quality Index

**RECOMMENDED ACTION:**

Information Only - No Action Required

**STRATEGIC PLAN:**

This item supports the following Strategic Plan Goal 1: Produce innovative solutions that improve the quality of life for Southern Californians. 3: Be the foremost data information hub for the region.

**EXECUTIVE SUMMARY:**

*SCAG's economic programming develops analyses to help inform policymakers' decision-making related to the development and implementation of the regional plan. This report provides an update on three of SCAG's economic programs that help communicate economic analysis and disseminate data resources: SCAG's newly formed Economic Roundtable, the Economic Trends Tool, and the SCAG Job Quality Index (JQI). The Economic Roundtable is a group of eight independent economic experts who meet quarterly with SCAG staff to discuss the implications of economic events for the region and update our regional economic outlook. The Economic Trends Tool is a digital tool for sharing data and visualizations of key economic indicators for the region. This report provides information on the tool's features and how to access the Economic Trends Tool. Finally, this report provides an overview of SCAG's ongoing project to develop a county-level Job Quality Index, a project funded by a one-time grant from the State of California to implement SCAG's Inclusive Economic Recovery Strategy.*

**BACKGROUND:**

The goal of SCAG's economic programming is to provide a baseline of economic facts for the region and develop analyses that help policymakers' decision-making related to the development and implementation on the regional plan. This objective, evidence-based resource is intended to help policymakers parse through bias and advocacy consistent with SCAG's strategic plan core value, "Be open" and goal of being "the foremost data information hub for the region." Over the past two years, staff has introduced new approaches for communicating economic information about the region. This report provides an update on three SCAG economic programs:

1. SCAG Economic Roundtable,
2. Economic Trends Tool, and
3. SCAG County Job Quality Index

### **SCAG's Economic Roundtable**

SCAG has relied on a group of independent economic consultants with regional expertise for nearly a decade and a half. We referred to this group as the “Economic Bench” and its primary focus was to support the annual Economic Summit event and program materials. In recent years, SCAG has responded to an increased need for data and analysis to support planning priorities such as Connect SoCal and the Inclusive Economic Recovery Strategy (IERS) by expanding in-house expertise in regional economics and also committed to a more inclusive approach to economic work. Moreover, technology and broader social and geopolitical circumstances call for and allow for more frequent updates to the regional outlook than the annual summit. In response, the “Economic Bench” has evolved into SCAG’s Economic Roundtable, managed by SCAG’s senior economist, which leverages in-house economic expertise to bring together the diverse views of eight regional economic specialists.

The Economic Roundtable was initiated in October 2022 and consists of eight outside economic experts listed in Table 1. SCAG’s Economic Roundtable aims to take a holistic view of the Southern California economy and include a broad range of county-specific and topic-area expertise. The Roundtable meets quarterly to discuss each member’s economic analyses and assess the implications of current economic events affecting the SCAG region. The Roundtable members bring diverse perspectives on the regional economy and economic policy. SCAG staff curates key insights and discussion points from the quarterly Roundtable meetings. After review by Roundtable members, staff shares the Roundtable insights as a news bulletin to promote evidence-driven regional policymaking.

**Table 1: SCAG 2022-2025 Roundtable**

Expert	Affiliation	Specialty
Michael Bracken	Development Management Group, Inc. (DMG)	Imperial County
Shaun Fernando	Guidehouse Consulting	Workforce Development, Sustainability
Manfred Keil	Inland Empire Economic Partnership (IEEP) and Claremont McKenna College	Riverside & San Bernardino, Macro Economics
Karthick Ramakrishnan	University of California, Riverside (UCR) and California 100	Equity, Data Visualization
David Roland-Holst	Berkeley Economic Advising & Research (BEAR) and University of California, Berkeley	Sustainability, Economic Development
Mark Schniepp	California Economic Forecast (CEF)	Region-wide, Ventura
Shannon Sedgwick	Los Angeles County Economic Development Corporation (LAEDC)	Los Angeles County
Wallace Walrod	Tech Coast Consulting Group (TCCG)	Orange County

In Fall 2022, SCAG staff worked closely with the Economic Roundtable members to produce the materials for the December 2022 Economic Summit, including the Regional Briefing Book ([https://scag.ca.gov/sites/main/files/file-attachments/briefing\\_book\\_2022\\_final.pdf?1669774904](https://scag.ca.gov/sites/main/files/file-attachments/briefing_book_2022_final.pdf?1669774904)). In January 2023, the Roundtable held its winter quarter meeting to discuss emerging issues facing the SCAG region and to update the regional economic outlook. The first quarterly Economic Roundtable Update was recently published online (<https://scag.ca.gov/news/scag-economic-roundtable-update>). The Roundtable will reconvene in mid-April to discuss the regional economic outlook and share economic insights. An Economic Roundtable Update will be published soon after each quarterly meeting.

As reported in the Winter 2023 Economic Roundtable Update, the Roundtable discussion focused on continued economic uncertainty, inflation concerns, and the logistics sector. The consensus among the Roundtable members was that an economic slowdown is likely in 2023, and the region’s strong labor market would help the region weather the slowdown. Inflation rates were expected to drop. However, the Roundtable acknowledged that the historically high interest rates—necessary for cooling inflation—are having a significant impact on the real estate market in the SCAG region, with sales of existing homes declining by over 48 percent year-over-year as of December 2022. The logistics sector was also a center of conversation. While our experts expressed concern about new competition in logistics from Texas and Georgia and risks from automation, they also saw potential opportunities for this sector to leverage our accessible ports and become a leader in transportation innovation. To accomplish this, however, the region needs to support greater skills and educational development to meet the needs of an innovation economy.

**Economic Trends Tool**

The Economic Trends Tool is a digital data resource that reports the latest monthly economic indicators for the region and the six SCAG counties. This tool complements the Economic Roundtable, presenting data and analysis discussed in the Economic Roundtable Update. It is also a data resource on which the Economic Roundtable members rely for their analyses. The Economic Roundtable News Bulletin and the Economic Trends Tool help establish a baseline for economic development discussions among SCAG region stakeholders.

**Table 2: SCAG Economic Trends Tool Availability of Economic Indicators**

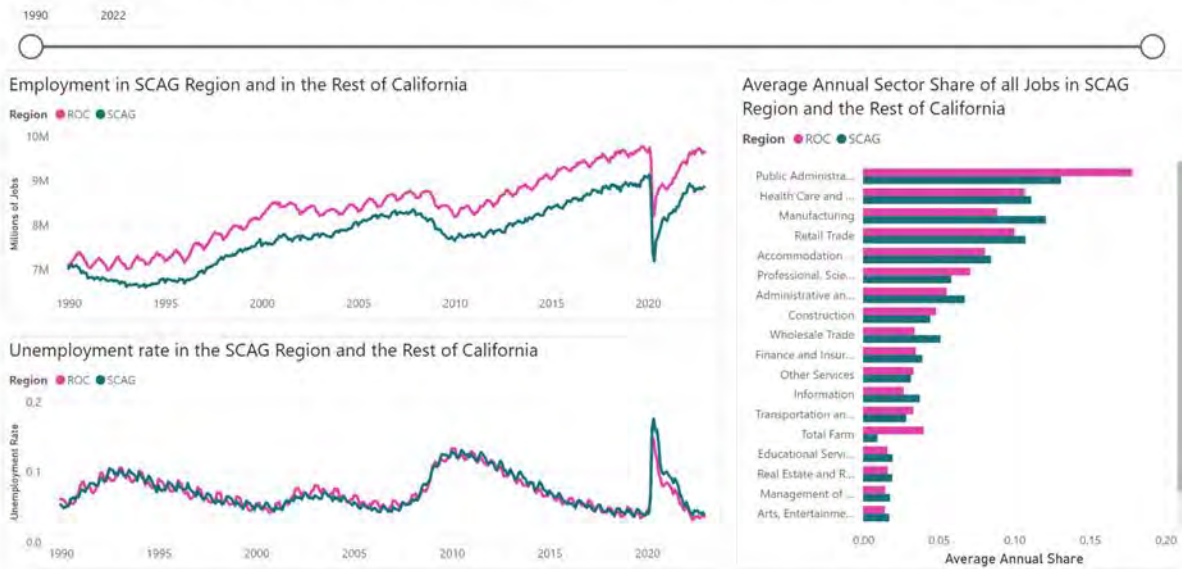
Economic Indicator	Status	Economic Indicator	Status
<b>Employment</b>		<b>Income</b>	
Total Employment	Available	Real Household Income	Available
Unemployment rate	Available	Wages by Sector	Proposed
Employment by sector	Available	GDP Per Capita	Proposed
Labor force participation	Coming Soon	Sales Tax Revenues	Coming Soon
Labor force participation rate	Coming Soon		
<b>Housing &amp; Building</b>		<b>Demographics</b>	
Regional inflation rate	Available	Population	Available
Residential building permits	Available	Population by Race	Available
Value of commercial permits	Proposed	Population by Age	Available
Median home values	Proposed	Educational Attainment	Available
Median rents	Proposed		
Housing affordability index	Proposed		

The Economic Trends Tool reports employment, housing production, and population data. Table 2 lists the economic indicators currently reported in the Economic Trends Tool and future indicators we plan to include. The tool is publicly accessible from the link <https://scag.ca.gov/econtrends>. Figures 1-3 show some of the available visualizations, allowing the user to select the time period and geography to display. Source information and an Excel data download are also available from the Economic Trends Tool.

**Figure 1: Economic Trends Tool SCAG Employment**

- Welcome
- Regional Employment
- County Employment
- Sector Employment
- Housing Permits
- Demographics
- Demographic Details
- Sources

**Total Employment, Industry Employment, and Unemployment Rate in the SCAG Region Compared to the Rest of California (ROC)**



**Figure 2: Economic Trends Tool County Employment by Sector**

- Welcome
- Regional Employment
- County Employment
- Sector Employment**
- Housing Permits
- Demographics
- Demographic Details
- Sources

Distribution of Employment by Industry Sector in SCAG Counties

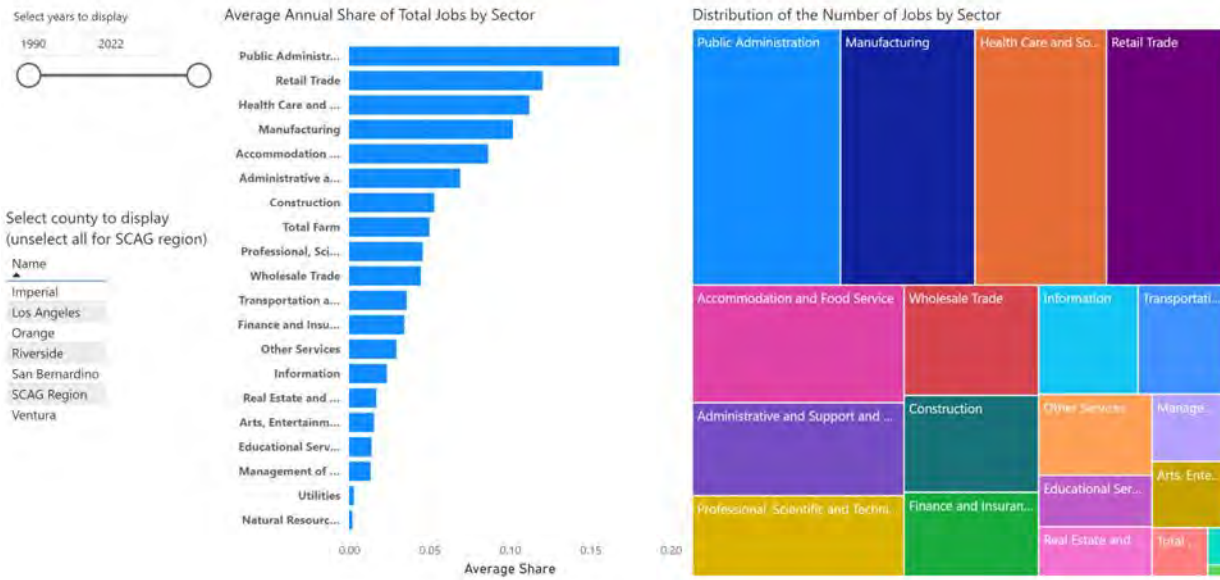


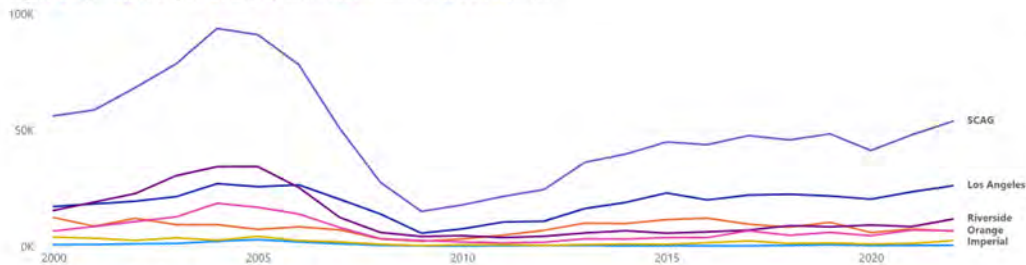
Figure 3: Economic Trends Tool Housing Permits and Inflation

- Welcome
- Regional Employment
- County Employment
- Sector Employment
- Housing Permits**
- Demographics
- Demographic Details
- Sources

Construction Permits for Residential Construction in the SCAG Region

Total Housing Unit Permits Issued per Year

Region: Imperial, Los Angeles, Orange, Riverside, San Bernardino, SCAG, Ventura



Inflation Rate for Los Angeles-Long Beach-Anaheim MSA



- Select region
- Select all
  - Imperial
  - Los Angeles
  - Orange
  - Riverside
  - San Bernardino
  - SCAG
  - Ventura



### Job Quality Index

SCAG's Inclusive Economic Recovery Strategy Report (IERS) proposed the development and estimation of a subregional (county-level) job quality index (SCAG JQI). The SCAG JQI aligns with the California Future of Work Commission's March 2021 Report, which identified a job quality index as a tool for advancing the goal of raising the quality of jobs. With support from State Senator Susan Rubio, SCAG received a one-time grant from the State to implement IERS strategies, including developing the county-level job quality index for the SCAG Region.

The SCAG JQI will provide a benchmark for a common understanding of the region's job markets, which can inform policy discussions and help measure progress toward a more robust, inclusive, and equitable economy. This tool is valuable for several reasons. The average worker spends a third of their life at work. The quality of the jobs they do undoubtedly impacts the quality of life. Quality jobs are also the foundation for regional economic growth and resilience against economic downturns, disruptions, and external shocks. Moreover, access to high-quality jobs leads to a more equitable and inclusive economy by building resilience among all workers and helping businesses be more competitive, particularly in tight labor markets.

With technological advances and globalization, the benefits of skill development and specialization have made economies and job markets more complex, increasing wage disparities and risks of mismatch between the skills offered by workers and the skills demanded by firms. A job quality index is a tool for understanding these increasingly complex job markets and identifying and measuring opportunities and challenges for economic development policy. **The SCAG Job Quality Index (JQI) aims to help policymakers better understand job markets in the region, identify high-quality jobs based on a range of characteristics, and measure progress toward a more robust, inclusive, and equitable economy.** As one of the earliest agencies to begin this work, it may become a prototype for other regions. Furthermore, workers and employers will benefit from greater information, facilitating planning, career development, and recruiting for increased productivity and retention.

SCAG contracted with consultant Berkeley Economic Advising and Research (BEAR) to build the SCAG JQI. The SCAG JQI will concisely measure labor market conditions and progress toward a more equitable and resilient labor market for each of the region's six counties. In addition, the SCAG JQI will summarize different dimensions of job quality, such as compensation, benefits, and workplace conditions. Key inputs to the JQI are the specific job attributes and the relative importance of such attributes that best reflect the region.

The JQI project is broken down into four phases:

- (1) Conceptual development,
- (2) Data and statistical modeling,

- (3) Stakeholder feedback, and
- (4) Incorporate feedback, document methods, and compute the index.

The data and statistical modeling phases are nearly complete, and we will kick off the Stakeholder Feedback phase in late April 2023. The SCAG JQI is expected to be released by the end of summer 2023.

In addition to stakeholder feedback, a JQI Technical Advisory Group (see Table 3) provides technical peer review of SCAG’s JQI. The draft Job Quality Index framework will be available for stakeholder review and feedback in mid-April.

**Table 3: SCAG JQI Technical Advisory Group**

<b>Expert</b>	<b>Affiliation</b>
Nader Afzalan, Ph.D.	Senior Advisor at California Governor's Office of Planning & Research
Marek Gootman, Ph.D.	Senior Fellow, Brookings Institution
Gigi Moreno, Ph.D.	Senior Economist, SCAG
Naomi Young, M.S.	Principal Economist, SANDAG

SCAG staff and consultant BEAR will conduct outreach for the Job Quality Index draft framework between mid-April and mid-June 2023. Our outreach efforts will include presenting the draft job quality index framework at the Global Land Use and Environment (GLUE) Council, Technical Working Group, SCAG Economic Roundtable, and to SCAG’s subregions through the Subregional Executive Director's meeting. Staff will also be reaching out individually to local economic development corporations and sister agencies during this time to solicit additional input should they not be represented in the above groups. We will seek feedback from stakeholders on the following questions:

- What qualities (e.g., compensation, benefits, workplace conditions, professional development) of a job would be essential in measuring job quality in a sector and/or jurisdiction?
- What is the relative importance of the different job attributes and how does this differ by jurisdiction?
- What features of a job quality index would be most informative and valuable (e.g., how it is published, information or data available, etc.)?



**FISCAL IMPACT:**

Work associated with this item is included in the FY 2022-23 Overall Work Program in 055-1531.01 (So Cal Economic Growth Strategy) and 320-4902.01 (Inclusive Economic Recovery Strategy (IERS) Implementation Grant).

**ATTACHMENT(S):**

1. PowerPoint Presentation - Economic Update: Focus on the SCAG Job Quality Index

# Economic Update: Focus on the SCAG Job Quality Index

CEHD

April 6, 2023

Gigi Moreno, Ph.D., Senior Economist, SCAG

WWW.SCAG.CA.GOV

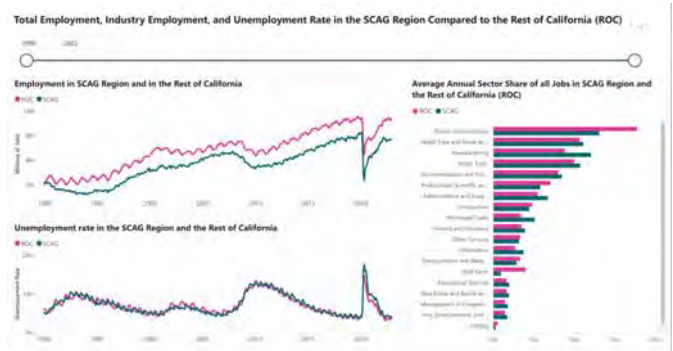
Attachment: PowerPoint Presentation - Economic Update: Focus on the SCAG Job Quality Index (Economic Update: Job Quality Index)

## Economic Trends Tool

- Digital report updated quarterly
- Data visualizations for key economic indicators
- <http://scaq.ca.gov/econtrends>



Microsoft Power BI  
app.powerbi.com

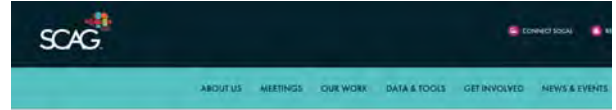


# SCAG Economic Roundtable update

- Quarterly Synopsis of Economic Roundtable Economic Update
- <https://scag.ca.gov/news/scag-economic-roundtable-update>



SCAG Economic Roundtable Update - Southern Califo...  
scag.ca.gov



## SCAG ECONOMIC ROUNDTABLE UPDATE

First Quarter, 2023

NEWS | MARCH 9, 2023

Despite slowing economic resilience, Southern California is likely to follow the nation into a recession and face several challenges ahead, including potential new supply chain constraints, labor and equitable growth, according to the latest quarterly update from SCAG's Economic Roundtable.

The Roundtable, a consortium of regional economic experts that met in January to update the region's economic outlook and discuss challenges and opportunities facing the six counties that comprise SCAG. The consensus was that the region and nation continue to face significant economic uncertainty during what has been an uneven post-pandemic recovery.

Members of the Roundtable are selected for three-year terms and have expertise in the economics of SCAG's six counties, workforce development, equity, and transportation. Members are:

- Imperial County, Michael Buckner, Development Management Group, Inc. (DMGI)
- Los Angeles County, Shannon Sedgewick, Los Angeles County Economic Development Corporation (LAEDC)
- Orange County, Wallace Wilford, Tech Capital Consulting Group (TCCG) and Orange County Business Council (OCBC)
- Riverside & San Bernardino Counties, Maribel Rod, Inland Empire Economic Partnership (IEEP) and Cameron McKinzie College
- Ventura County and the SCAG Region, Mark Schimpf, California Economic Forecast (CEF)
- Equity, Kuntick Mendelsohn, University of California, Riverside (UCR) and California VEO
- Sustainability, David Ralston-Hobbs, Berkeley Economic Advising & Research (BEAR) and University of California, Berkeley
- Workforce Development, Shaun Fernando, Gunderhose Consulting

Several overarching themes emerged from the conversation:

# SCAG Job Quality Index Project

- Inclusive Economic Recovery Strategy (IERS - adopted by SCAG Regional Council in July 2021)
- California Future of Work Report (March 2021)
- State grant to implement IERS Strategies
- Collaborating with consultant Berkeley Economic Advising & Research (BEAR)



# What is the SCAG Sub-Regional Job Quality Index?

- Comprehensive, standardized indicator of prevailing job quality in the region
- Assess and track job quality based on many attributes important to the region
- Informs decision-making along with other information

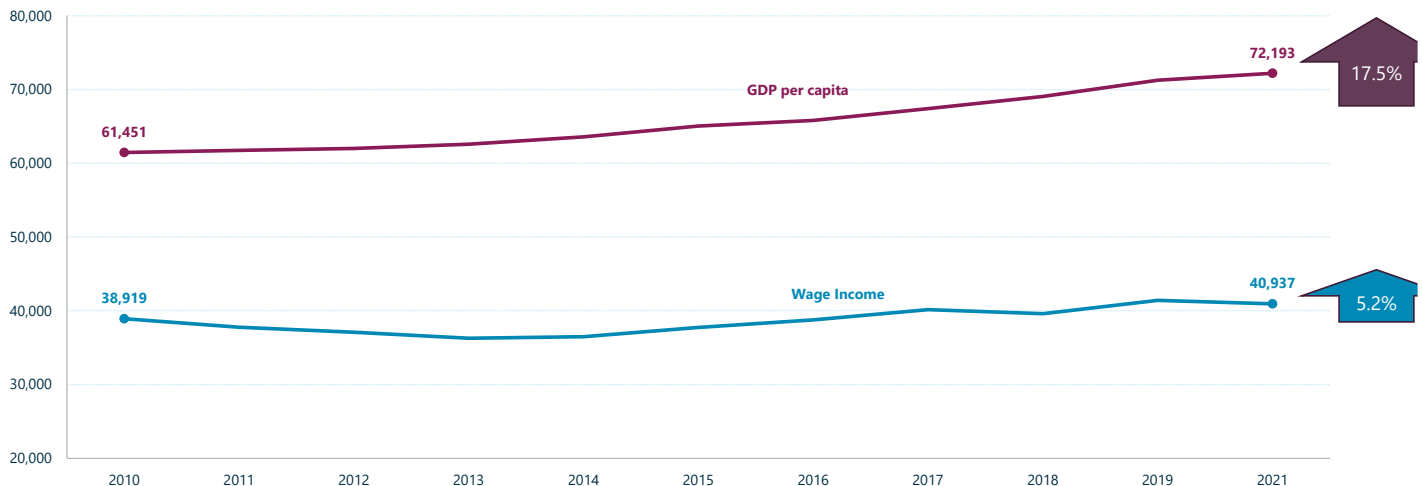


SOUTHERN CALIFORNIA ASSOCIATION OF GOVERNMENTS

5

# Real Wages are Stagnant and Inequitable in the SCAG Region

Median Wage Income and per capita GDP in the SCAG Region, 2022 U.S. Dollars



Notes: Wage income computed for adults (age 25+) in the labor force from ACS PUMS, 1-Year Samples 2010-2019, 2021. GDP per capita from REMI. Figures inflated to 2022 dollars using the CPI for Los Angeles-Long Beach-Anaheim MSA.

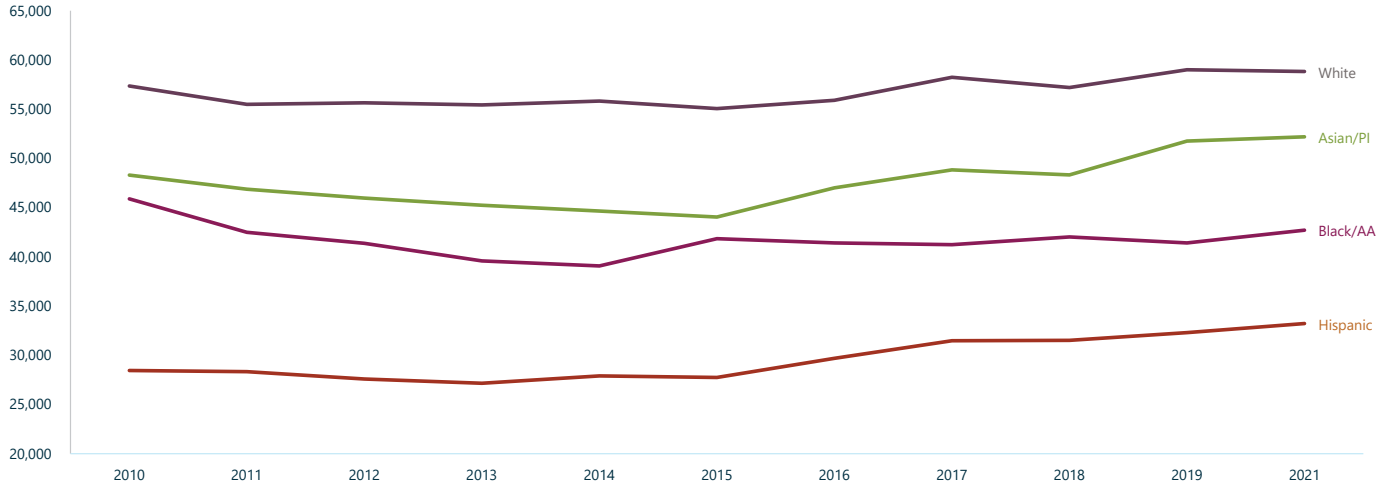
SOUTHERN CALIFORNIA ASSOCIATION OF GOVERNMENTS

6

Attachment: PowerPoint Presentation - Economic Update: Focus on the SCAG Job Quality Index (Economic Update: Job Quality Index)

# Racial Gap in Real Wages Persists in the SCAG Region

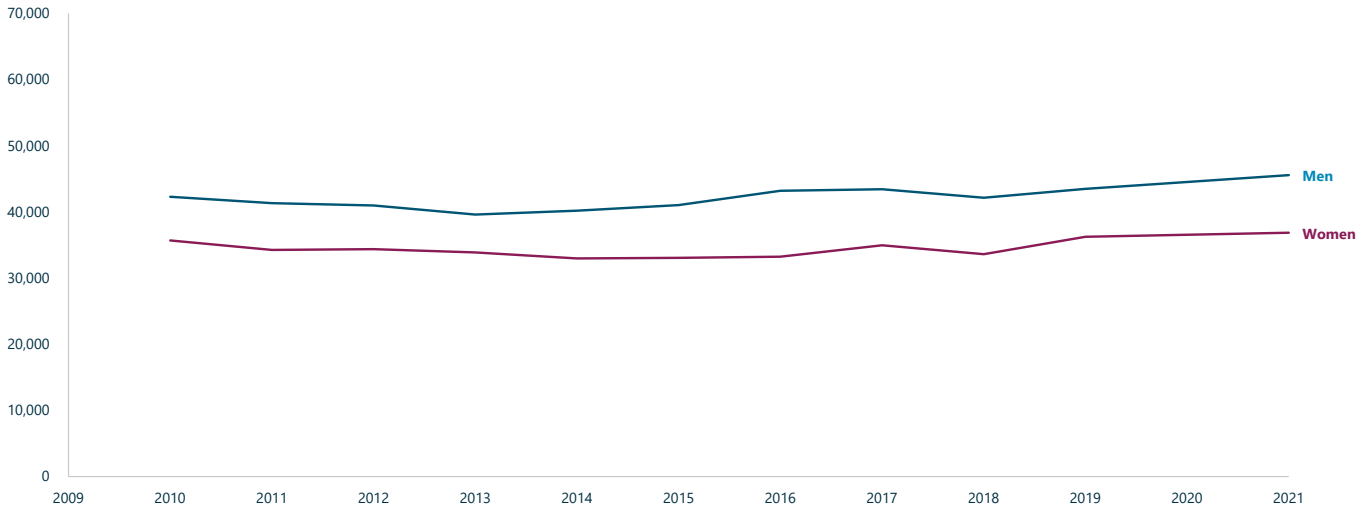
Median Real Wage Income in the SCAG Region by Race and Ethnicity, 2022 U.S. Dollars



Notes: Computed from American Community PUMS 1-Year Survey, 2010-2019, 2021. Hispanic includes all races. White, Black, Asian include respondents of each race group who identify as non-Hispanic.

# Gender Gap in Real Wages Persists in the SCAG Region

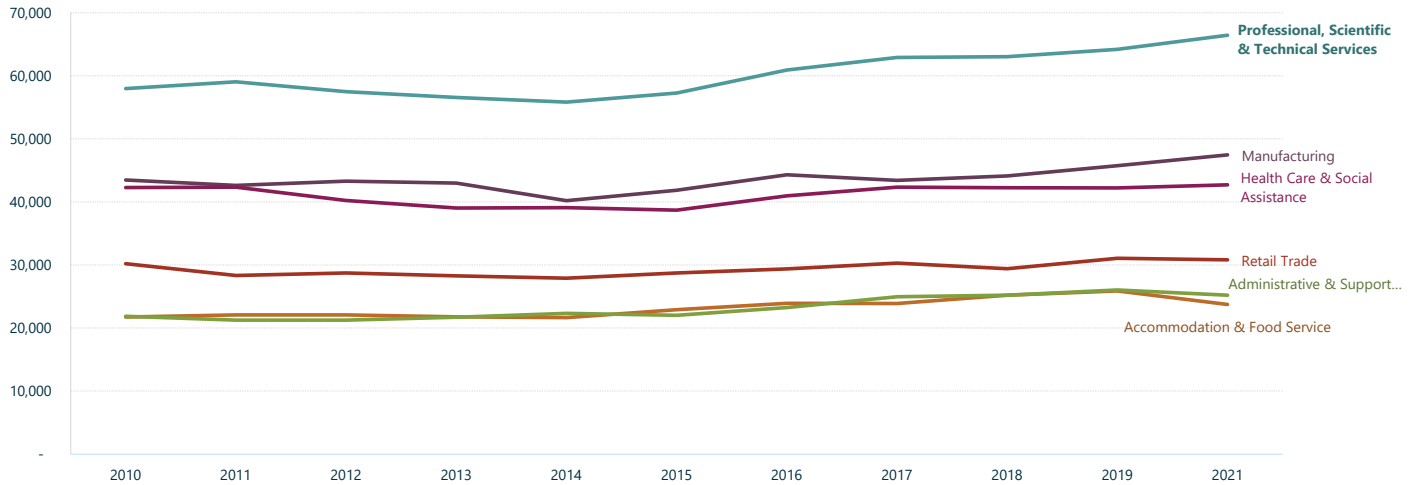
Median Real Wage Income in the SCAG Region by Gender, 2022 U.S. Dollars



Notes: Computed from American Community PUMS 1-Year Survey, 2010-2019, 2021.

# Wage Gap Among Industrial Sectors

Median Real Wage Income in the SCAG Region for Largest Sectors, 2022 U.S. Dollars



Notes: Computed from American Community PUMS 1-Year Survey, 2010-2019, 2021.

## Why is a regional job quality index valuable?

### For policymakers

- Identify policy priorities
- Monitor job quality
- Identify areas for improvement
- Assess the impacts of policy interventions





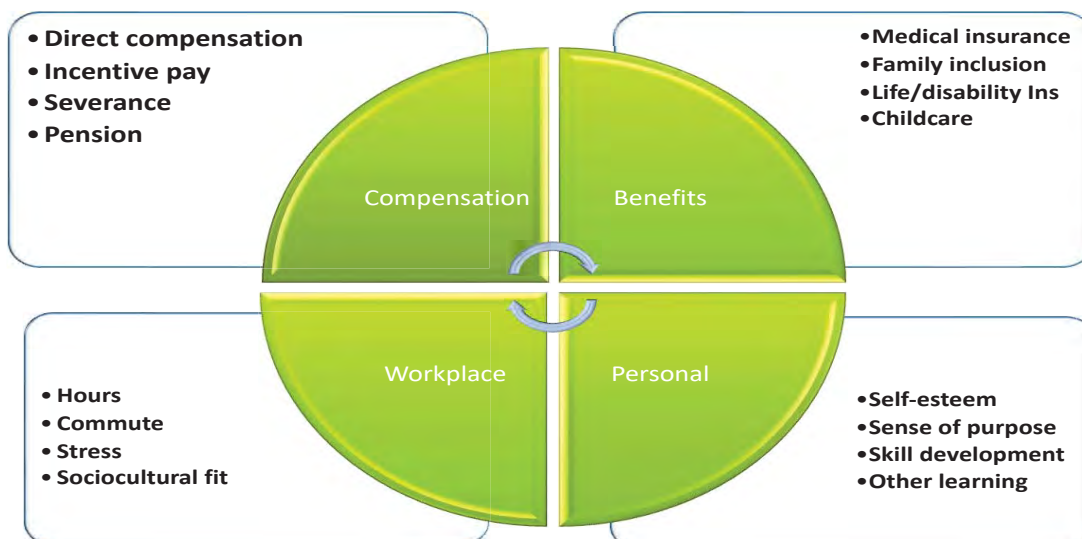
# Why is a regional job quality index valuable?

## For employers

- Become more competitive in labor market
- Better understand what is a quality job and improve working conditions
- Improve aspects of jobs to create a more equitable and supportive work environment



# Conceptual Framework and Job Attributes to Consider



# Stakeholder Outreach Plan

- Gather feedback
  - Global Land Use and Economics Council (GLUE)
  - Technical Working Group
  - SCAG Economic Roundtable
  - Subregional Executive Director's Meeting
- Focus Questions
  - What measurable job attributes should be included?
  - What is the relative importance of the different job attributes?



# THANK YOU!

For more information, please contact:

**Gigi Moreno, PhD**  
Senior Economist, SCAG  
[gmoreno@scag.ca.gov](mailto:gmoreno@scag.ca.gov)



AGENDA ITEM 8  
REPORT

Southern California Association of Governments  
April 6, 2023

To: Community Economic & Human Development Committee (CEHD)

EXECUTIVE DIRECTOR'S  
APPROVAL

From: Ma'Ayn Johnson, Planning Supervisor  
(213) 236-1975, johnson@scag.ca.gov

Subject: RHNA Reform Update

**RECOMMENDED ACTION:**

Information Only – No Action Required

**STRATEGIC PLAN:**

This item supports the following Strategic Plan Goal 1: Produce innovative solutions that improve the quality of life for Southern Californians.

**EXECUTIVE SUMMARY:**

*State law requires that HCD to conduct Regional Housing Needs Assessment (RHNA) reform and make recommendations to the Legislature by December 31, 2023. HCD recently announced that it will hold a public engagement process from March to May 2023, which includes a public online survey and an advisory group of experts. While there is not a formal comment period, HCD has indicated that written comments should be submitted no later than late August/early September. As part of its ongoing efforts to address the needs of stakeholders, SCAG is committed to holding a public input process on its recommendations for RHNA reform and requesting for CEHD Committee and Regional Council approval to submit an official comment letter. SCAG staff is currently developing a timeline and will share its schedule with stakeholders once finalized.*

**BACKGROUND:**

The Regional Housing Needs Assessment (RHNA) is a process to determine existing and projected housing need for every jurisdiction within the State of California. This housing need, also known as the RHNA allocation, covers an 8-year period and requires each jurisdiction, defined as cities and unincorporated counties, to plan for this need in their housing elements through an analysis of suitable sites and implementing various programs, including rezoning. The California Department of Housing and Community Development (HCD) provides every council of governments (COG), including SCAG, a regional RHNA determination and each COG is responsible for developing a methodology to distribute this regional need to individual jurisdictions. The 6th cycle RHNA regional determination for the SCAG region is 1,341,827 housing units across four income categories and covers the planning period October 2021 through October 2029.

During and after the 6<sup>th</sup> cycle RHNA process, a number of elected officials and stakeholders requested that SCAG pursue reform to the RHNA and Housing Element process. A gamut of issues was raised, such as the regional determination methodology, the use of land planning factors in the SCAG RHNA methodology, basis for RHNA appeals, the accounting of sites in housing elements, and the timeline for housing element completion.

Assembly Bill (AB) 101 (2019) and SB 197 (2022) require HCD, in collaboration with the Office of Planning and Research, to conduct RHNA reform and make recommendations to the legislature by December 31, 2023. However, its purview is restricted to Government Code Section 65584 through 65584.2, which concerns the RHNA process such as the regional determination, COG methodology, appeals process, and adoption of the final RHNA plan. Housing elements and zoning are in other sections of Government Code and thus not part of this current process.

To complement HCD's efforts, SCAG conducted an outreach process in Summer 2022 to collect input from stakeholders and the public on topics for consideration to reform. SCAG staff planned to develop draft recommendations and hold another outreach process to gather feedback. Draft recommendations would then be reviewed and approved by the CEHD Committee and the Regional Council. Subsequent to approval, SCAG staff would prepare a comment letter based on the approved recommendations and submit it to HCD as part of their RHNA reform outreach. At the time of SCAG's preliminary outreach, no information or dates were available from HCD for their RHNA reform outreach plan.

In late February 2023, HCD announced to its email distribution list that they would be holding a webinar on March 9, 2023 that would kickoff RHNA reform effort, also known as California's Housing Future 2040: The Next RHNA. SCAG staff attended the webinar to obtain more details and specific dates to coordinate SCAG's RHNA reform outreach.

At their webinar, HCD announced that its RHNA reform public engagement would be held between March and May 2023. Their engagement plan includes the following:

- **Online public survey**  
Launched on March 13, 2023, the online public survey asks a series of questions relating to data assumptions, process, and other factors regarding the RHNA determination and methodology process. The survey will be open until May 5, 2023 and can be accessed at [this link](#).
- **Dedicated email inbox**  
Questions and feedback about the RHNA reform process can be emailed to [CAHousingFuture2040@hcd.ca.gov](mailto:CAHousingFuture2040@hcd.ca.gov).
- **Sounding Board**

HCD will be inviting approximately thirty (30) experts from across the state representing a variety of RHNA stakeholders to participate in four discussion sessions. These sessions will be held from March to May and will provide feedback to HCD on RHNA reform topics. While these meetings will not be open to the public, HCD will publish each session agenda. The Sounding Board will not be a decision-making body. Ma'Ayn Johnson, Housing Program Manager, will represent SCAG on this advisory board. At the time of this report, HCD has not yet determined specific dates of the sessions.

- **Listening sessions/meetings with various stakeholders and COGs**

From March to May HCD will hold listening sessions with State agencies and other partners and also plan to meet with Councils of Governments (COGs) such as SCAG. Additionally, they will give presentations at conferences and recurring state coordination meetings. At the time of this report no dates or further information were available. At the time of this report, HCD has not yet determined specific dates for listening sessions and meetings.

In addition to the report on recommendations to the State Legislature, HCD is required to update the Legislature on their progress by July 1, 2023. No further milestone dates were provided. Updates from HCD will be posted on their website under the tab "California's Housing Future 2040: The Next RHNA - Stakeholder Engagement Events and Resources". This information was included in the March 13, 2023 SCAG Housing Newsletter and presented at the March 16, 2023 Technical Working Group meeting.

Notably, no formal comment period was indicated as part of HCD's RHNA reform process. A follow up correspondence with HCD staff confirmed that while there is no formal comment period, written comments should be submitted no later than late August/early September. SCAG is committed to ensuring a meaningful outreach and committee review process prior to submitting a RHNA reform comment letter to HCD. A timeline for public outreach on SCAG's draft recommendations and CEHD Committee and Regional Council action will be shared with stakeholders and the public once it is finalized.

SCAG will update the CEHD Committee at its April 6, 2023 meeting if more information is available then.

Due to the urgency of AB 101 RHNA reform, SCAG's current efforts will focus solely on RHNA. However, SCAG acknowledges the issues raised by stakeholders on the challenges of developing compliant 6<sup>th</sup> cycle housing elements. Staff will explore a longer-term plan to review these specific issues and make recommendations for action and possible implementation prior to the 7<sup>th</sup> cycle.

**FISCAL IMPACT:**

Work associated with this item is included in the FY 22-23 Overall Work Program (290.4924.01 – Regional Housing Program).



**ATTACHMENT(S):**

1. PowerPoint Presentation - RHNA Reform Updates



# RHNA Reform Update

Ma'Ayn Johnson, AICP  
Housing Program Manager

[WWW.SCAG.CA.GOV](http://WWW.SCAG.CA.GOV)

## RHNA Reform

- During the 6<sup>th</sup> RHNA cycle, a number of issues were raised by jurisdictions and stakeholders, including:
  - Calculation of regional determination
  - Factors used to determine housing distribution in the methodology
  - Role of Connect SoCal household projections
- SCAG has committed to review these issues and facilitate conversations with HCD to reform RHNA

# State RHNA Reform

- AB 101 (2019) requires the California Department of Housing and Community Development (HCD) to *“develop a recommended improved RHNA allocation process and methodology that promotes and streamlines housing development and substantially addresses California’s housing shortage”*
- Includes statewide stakeholder participation
- Limited to RHNA (Government Code 65584 through 65584.2)
  - **Does not include zoning or housing element issues**
- HCD must submit a report to the Legislature by December 31, 2023

# California’s Housing Future 2040: The Next RHNA

Date	Milestone
March-May 2023	Public engagement process <a href="mailto:CAHousingFuture2040@hcd.ca.gov">CAHousingFuture2040@hcd.ca.gov</a>
March 9	Kickoff webinar
March 13-May 5	HCD Online Survey ( <a href="#">Link</a> )
March-May	Sounding Board
March-May	Meetings/listening sessions with stakeholders
July 1	HCD update on progress to Legislature
December 31	Final report due to Legislature

- HCD has indicated that written comments be submitted no later than late August/early September
- SCAG will hold a public outreach process on its draft recommendations and CEHD/RC approval prior to submitting a comment letter to HCD