

SOUTHERN CALIFORNIA  
ASSOCIATION OF GOVERNMENTS

# Comprehensive Regional Goods Movement Plan and Implementation Strategy

## Bottlenecks Strategy

**FREIGHTWORKS**  
SOUTHERN CALIFORNIA DELIVERS THE GOODS

## Goals of Bottlenecks Strategy

- Identify highest priority truck bottlenecks in the SCAG region and counties
- Develop project concepts for highest priority bottlenecks with no current planned projects
- Identify the goods movement linkage between truck bottlenecks and currently planned projects
  - Raise profile of projects and leverage future goods movement funding
- Develop options for resolving problems outside of the E-W freight corridor

2

## Steps to get there

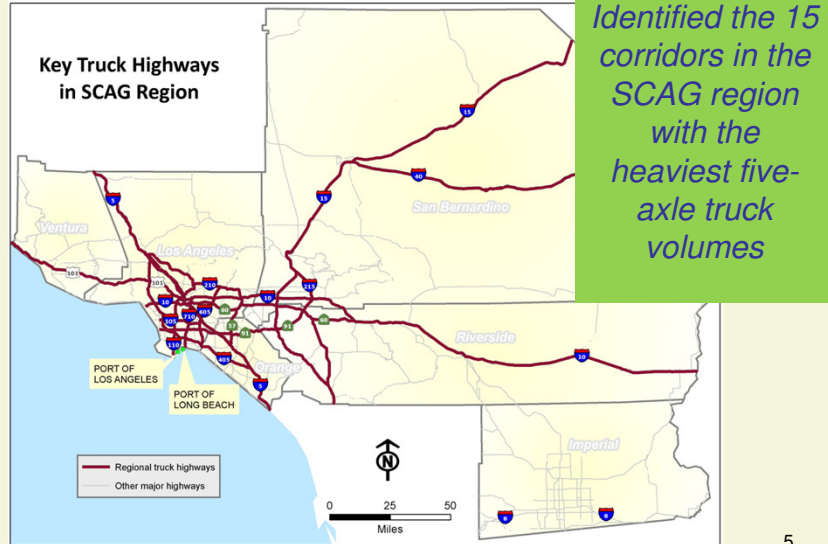
- Define truck highways
- Identify high/medium/low priority truck bottlenecks through data assessment and stakeholder input
- Map bottleneck locations and roadway improvement projects (sources include FTIP, County RTP submissions, MCGMAP, CSMP)
- Overlay analysis: Bottlenecks and Existing Projects
- Develop project concepts

3

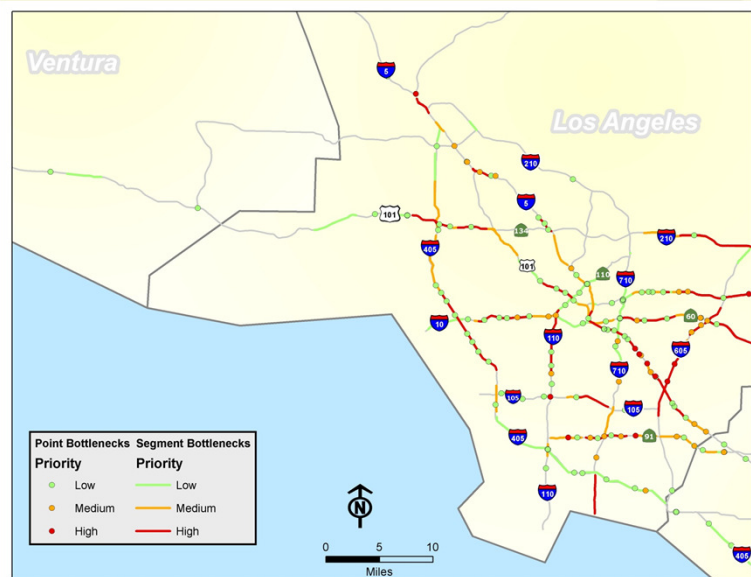
## Key Caveats and Data Issues

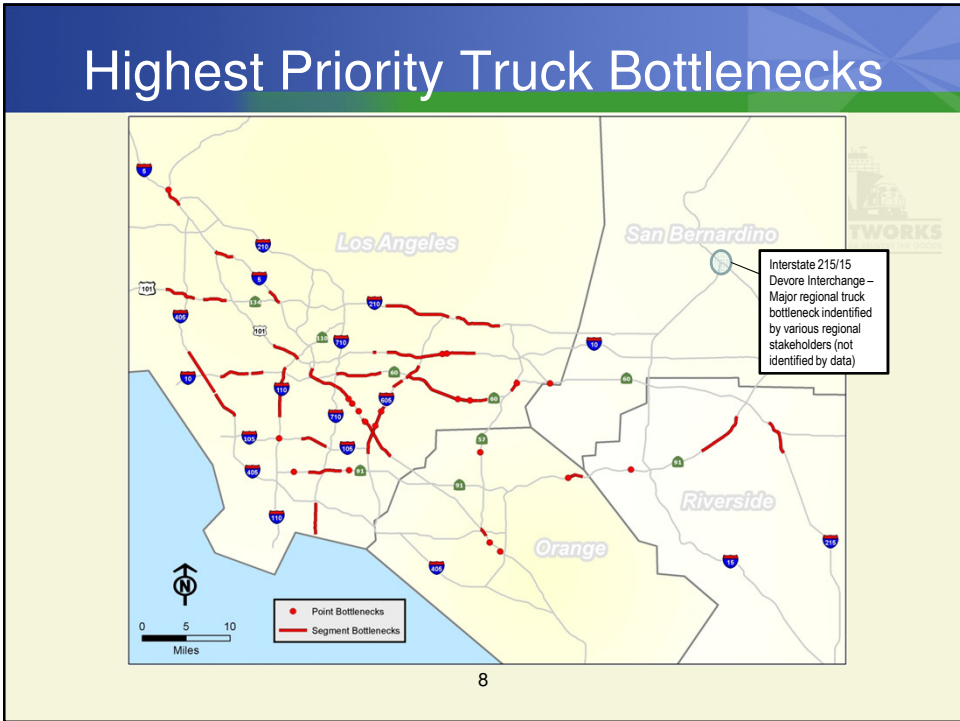
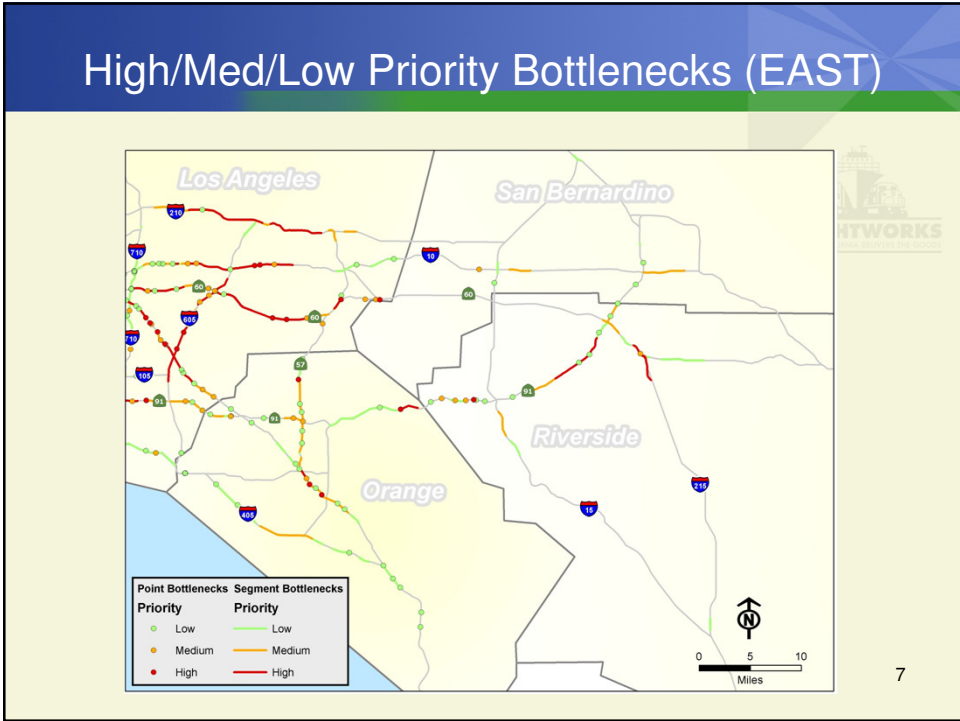
- **Planning-level analysis:** Analysis does not simulate performance of individual projects and does not analyze planned project impacts on bottlenecks
- **PeMS** data Issues
- **INRIX** data Issues

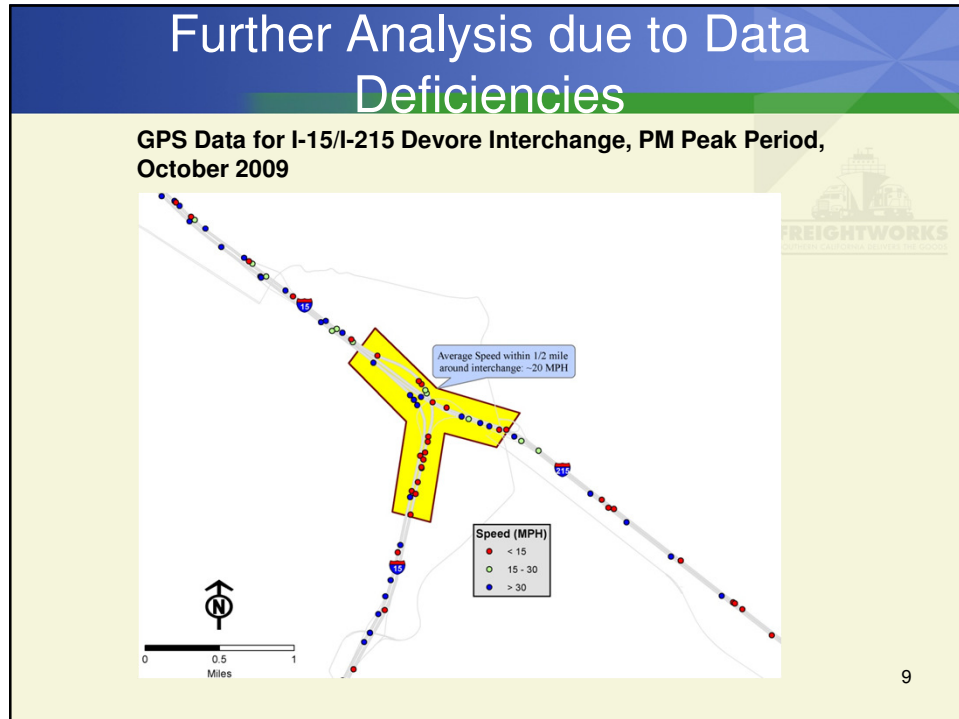
# Key Regional Truck Highways



# High/Med/Low Priority Bottlenecks (WEST)







- ## SH7 Remaining Steps
- **Complete** project/bottleneck overlay analysis (*Early September*)
  - **Develop** project concepts for highest priority bottlenecks with no project concepts (*Mid September*)
  - **Develop** consolidated high priority project list (*End September*)
- 10

## Slide 10

---

**SH7**

I would suggest slightly different deadlines - see my new slide on the next slide.

Sophie Hartshorn, 9/1/2011