

# Repairing and Investing: Addressing Equity in the Built Environment

June 29, 2021

1:00 pm – 2:30 p.m.

[www.scag.ca.gov](http://www.scag.ca.gov)

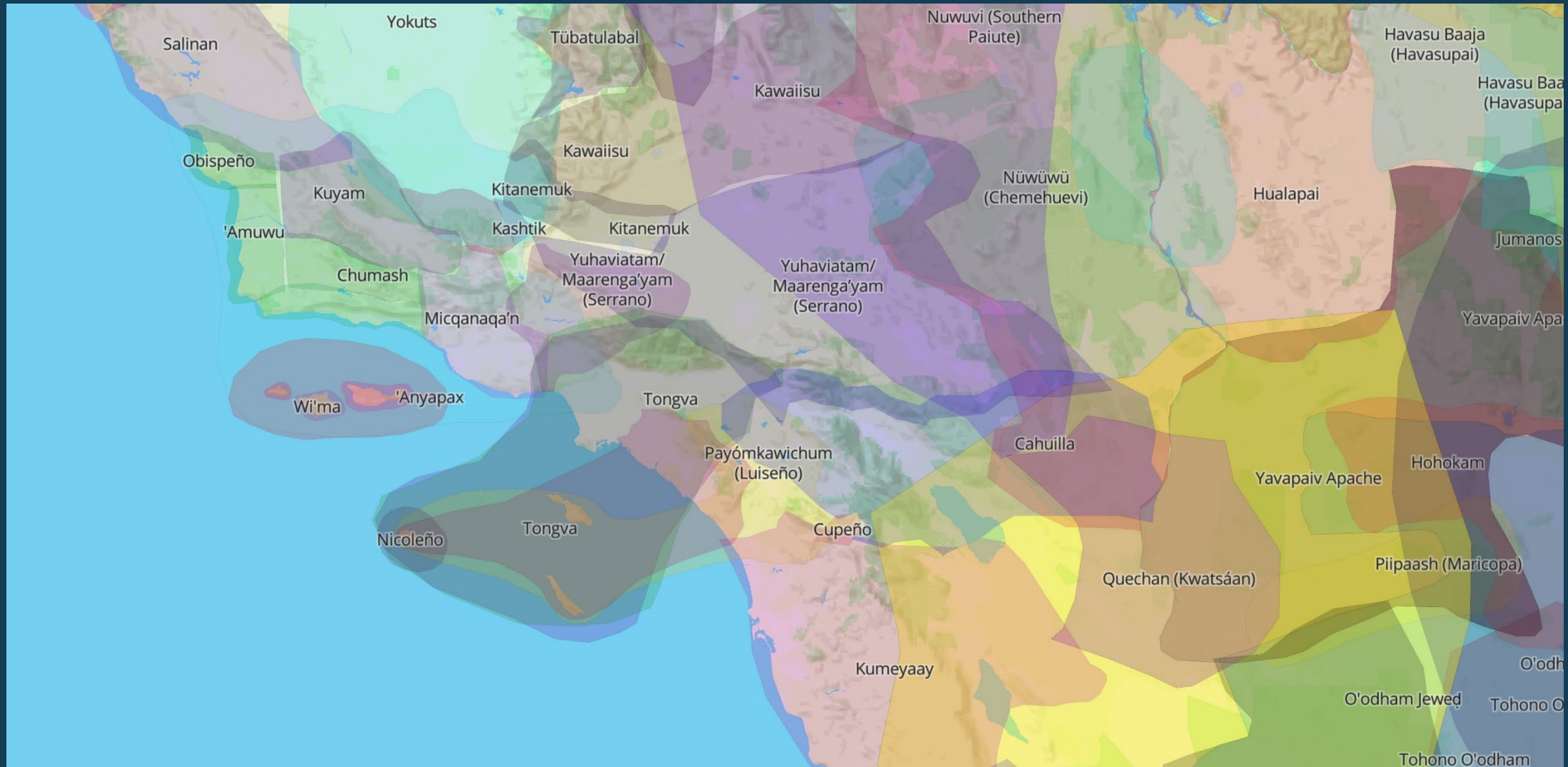


# Meeting Logistics



1. Webinar length: approximately 1.5 hours
2. Please take care to mute your audio/phones
3. At the end of the presentations, there will be a Q&A session followed by facilitated breakout sessions
4. If you have a question during a presentation, type it into the chat box, or raise your hand and we will call on you after the presentation is finished
5. Think of something later? Email [aguirre@scag.ca.gov](mailto:aguirre@scag.ca.gov) or the presenter
6. All presentations will be emailed to those who registered to participate in today's webinar

# Land Acknowledgement



# Presentations



## **Presentation #1: Overview of Regional Conditions, *Go Human* Campaign**

*Andres Carrasquillo, SCAG*

## **Presentation #2: Race, Place, and Space**

*Naomi Doerner, Director of Equity, Diversity & Inclusion, Nelson\Nygaard*

## **Presentation #3: Repave Oakland, Oakland's 2019 3-Year Paving Plan**

*Josie Ahrens, Transportation Planner II, Oakland DOT*

## **Safe Streets for All: Addressing Disproportionate Traffic Safety Outcomes in the City of LA**

*Lauren Ballard, Supervising Transportation Planner, Los Angeles Department of Transportation*

# Overview of Regional Conditions & *Go Human* Campaign

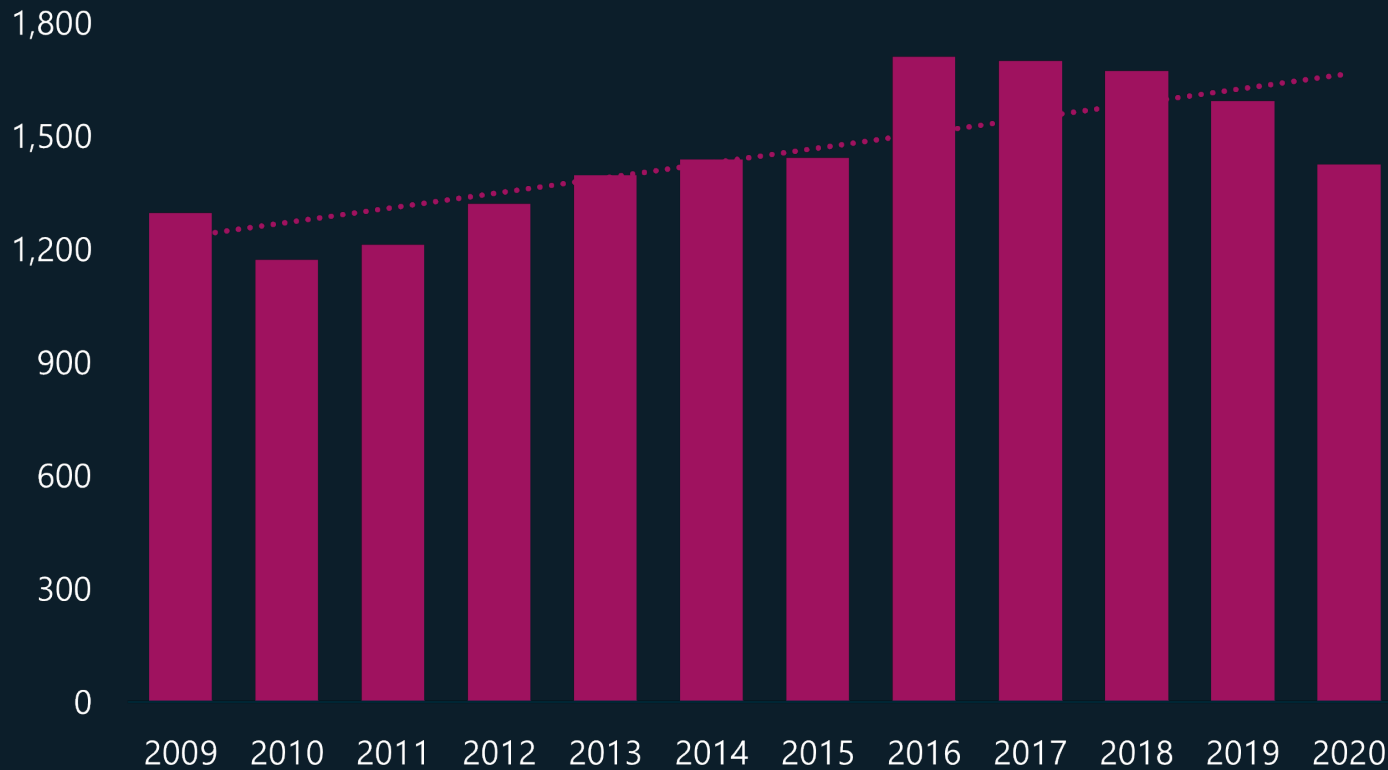
Summer 2021

[www.scag.ca.gov](http://www.scag.ca.gov)



# What are the overall trends?

## SCAG Region Total Number of Fatal Victims



**1,450**  
PEOPLE DIE EVERY YEAR FROM COLLISIONS

**5,500**  
PEOPLE SUSTAIN SERIOUS INJURIES EVERY YEAR FROM COLLISIONS

**77%**  
OF ALL COLLISIONS OCCUR IN URBAN AREAS

### Why are collisions occurring?

One of the top contributing factors of all collisions is unsafe speed.

Speed is the critical factor in the severity of collisions.

**HIT BY A VEHICLE TRAVELING AT 25 MPH**  
89% chance of survival.

**HIT BY A VEHICLE TRAVELING AT 35 MPH**  
68% chance of survival.

**HIT BY A VEHICLE TRAVELING AT 40 MPH**  
35% chance of survival.

# Arriving Home Safe

The State of Transportation Safety in the Southern California Region

Southern California Association of Governments | June 8, 2021

Visit [scag.ca.gov/transportation-safety](https://scag.ca.gov/transportation-safety) for all county-specific factsheets, a Story Map, the Transportation Safety Regional Existing Conditions Report, and more.



# Go Human Active Transportation Safety & Encouragement Campaign



## Co-Branding & Regional Advertising Campaign



## Temporary Safety Demonstrations & Programming (Kit of Parts)



## Safety Workshops, Webinars, and Technical Assistance





# SCAG's *Go Human* Traffic Safety Peer Exchanges



## Traffic Safety Peer Exchanges Events



### **Wednesday June 9, 1 – 2:30 p.m.**

Using Data to Craft a Safety Narrative: High Injury Networks

### **Wednesday June 16, 1 – 2:30 p.m.**

Making Traffic Safety a Reality: Funding Strategies

### **Tuesday June 22, 1 – 2:30 p.m.**

More than a Checkbox: Better Community Engagement

### **Thursday June 24, 10 a.m. - noon**

Traffic Safety is a Public Health Issue: Collaborating to Save Lives

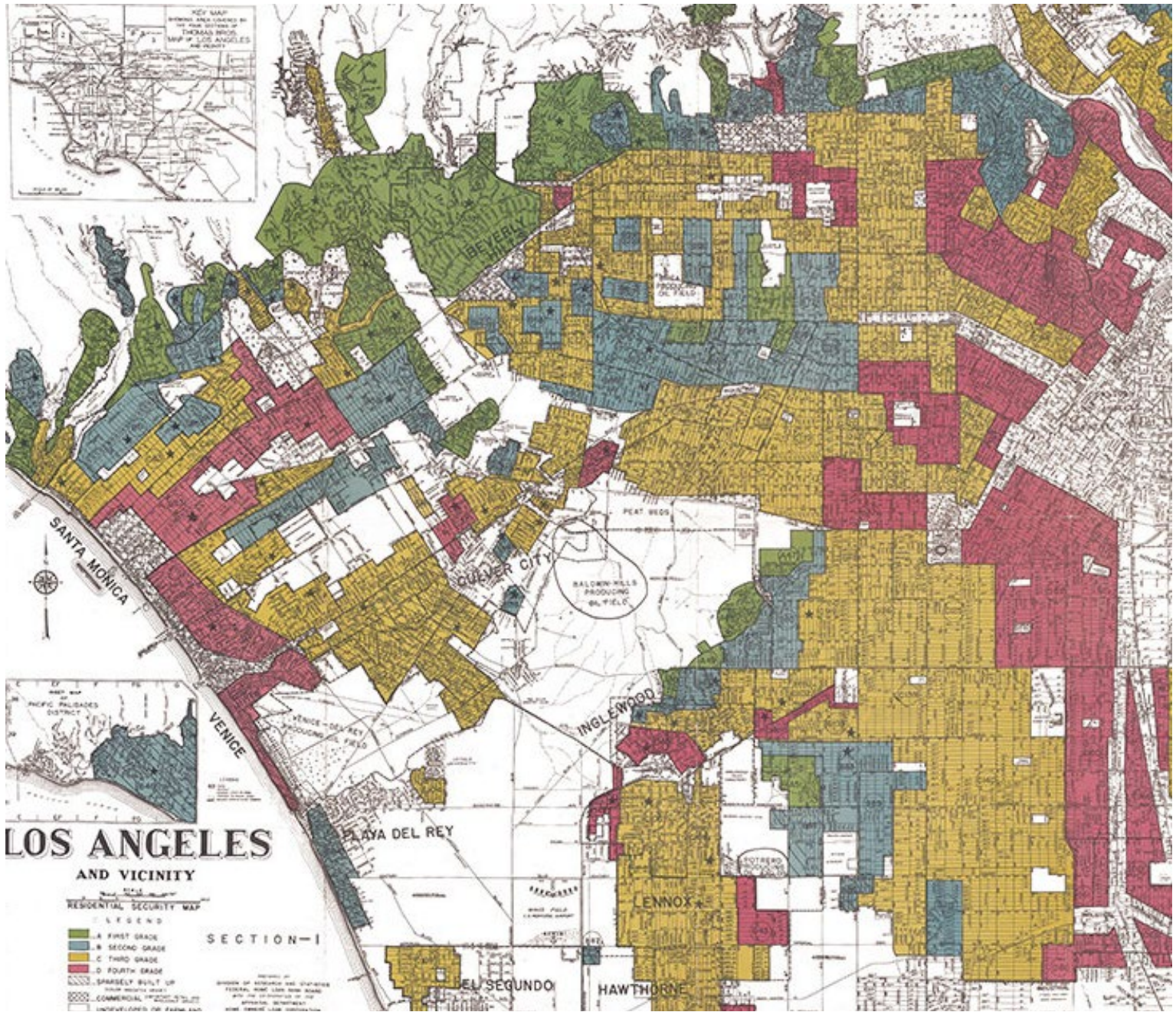
### **Tuesday June 29, 1 – 2:30 p.m.**

Repairing & Investing: Addressing Equity in the Built Environment

**Visit [gohumansocal.org](http://gohumansocal.org) to register and sign up for the *Go Human* newsletter**

**Follow *Go Human* on socials @GoHumanSoCal**

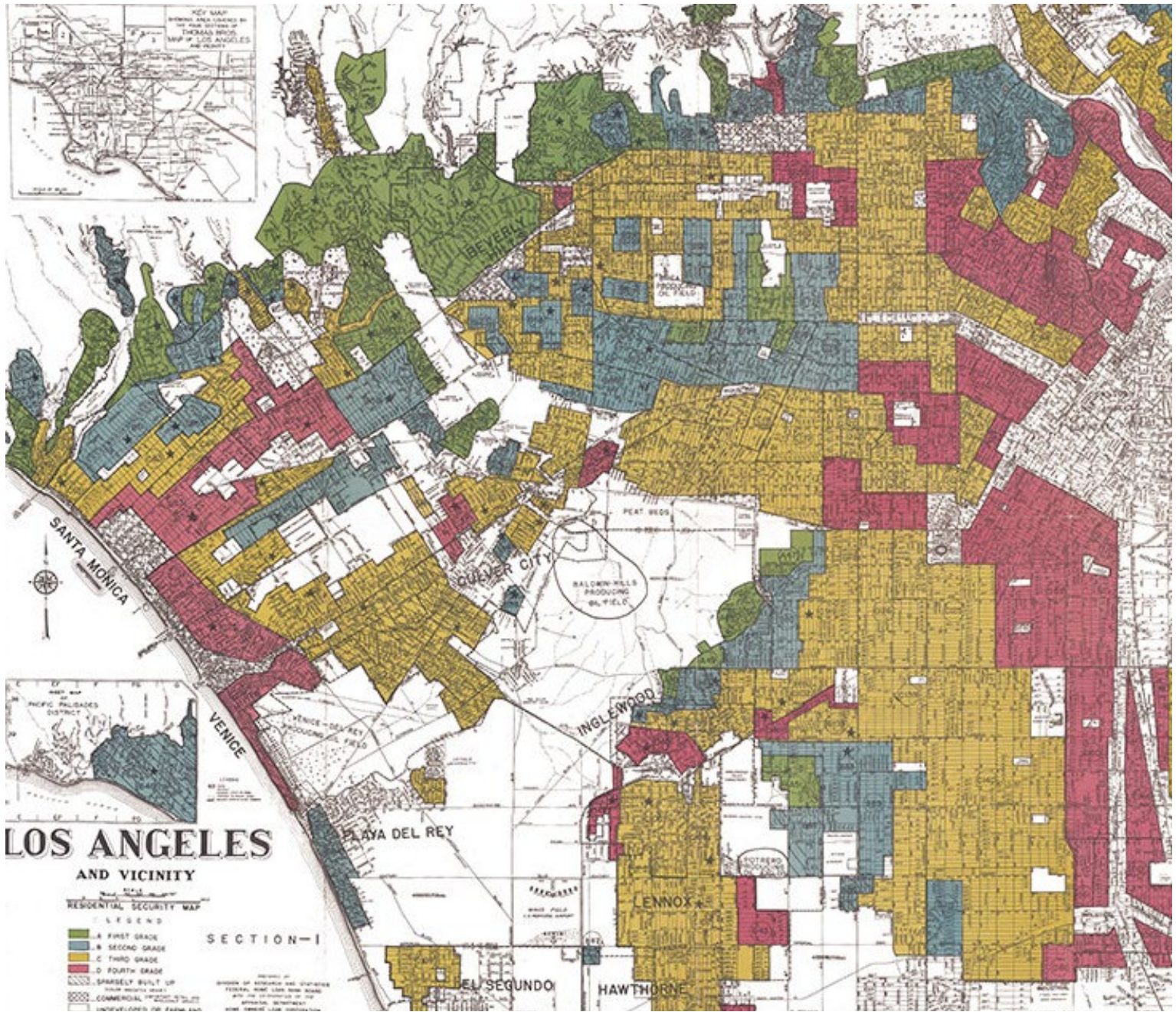




# Race, Space & Place

Presented by,  
 Naomi Doerner  
 Director of Equity, Diversity & Inclusion | Nelson/Nygaard  
 SCAG Go Human | Equity in the Built Environment  
 6.29.2021





- 1 Nelson/Nygaard Overview
- 2 Context of Race, Space & Place
- 3 Racial Equity Approach

# Overview



## Transportation is how we change the world.

From mitigating climate change to improving public health and dismantling historical inequities.



## Working together

we can achieve the broader goals of mobility, equity, economic development, and healthy living.



## We partner with clients and communities

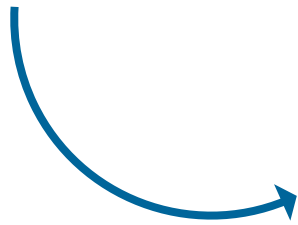
by using data-driven tools to help them align their transportation investments with their values.

- We are an **internationally recognized transportation planning firm** with 130 people in offices across the country
- We are a **former woman-owned business**
- We are **guided by our core values** and actions to advance equity—internally and within the broader transportation industry
- We understand the importance of **building supportive relationships** with our WMBE partners

# Overview

Developing **transportation systems to promote** broader community goals of **mobility, equity, sustainability, health, and economic development.**

## We Put People First



Transit



Transit Corridors



Active Transportation and Safety



Cities and Streets



Parking and Demand Management



Paratransit and Community Transit



Emerging Mobility



Engineering and Design

# Context of Race, Space & Place

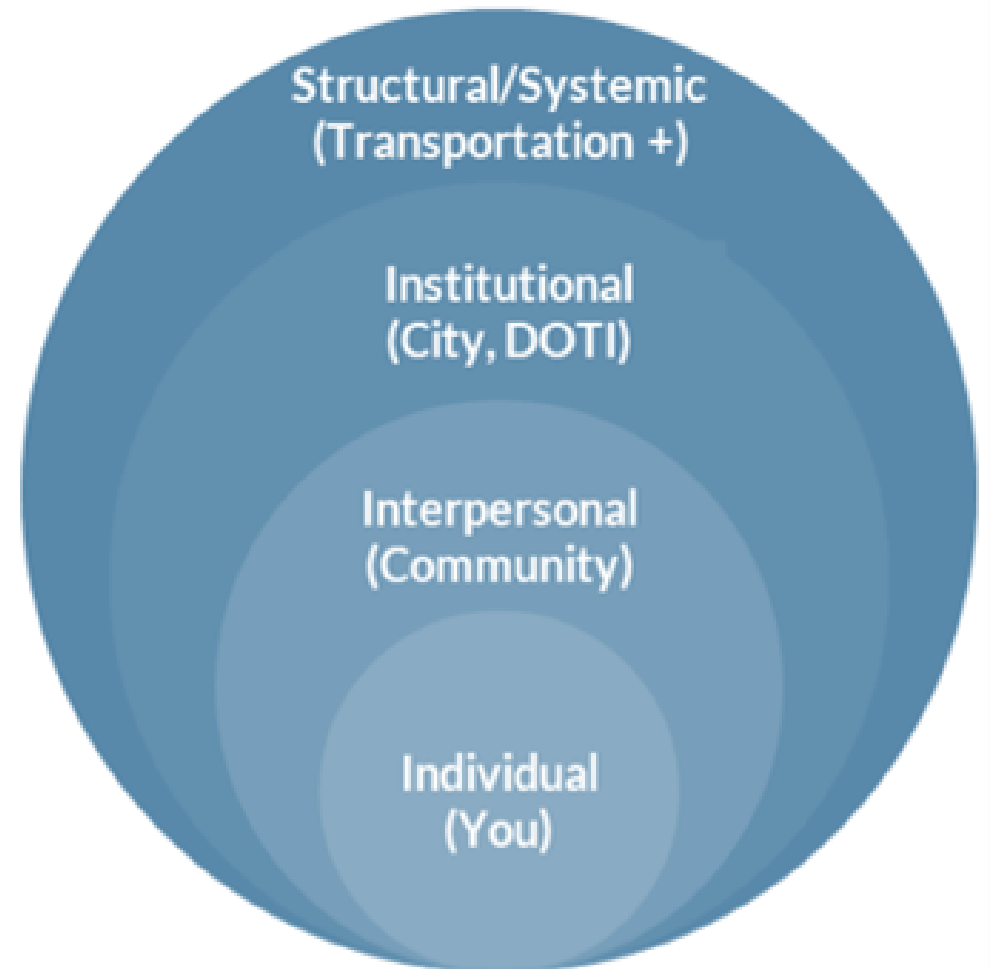
# Context for Race, Space & Place

**Race**

Socially constructed hierarchy based on physical features-- skin color, hair texture, etc.-- rooted in white supremacy, placing white people at the top of the hierarchy and Black people at the bottom.

**Racism**

The marginalization and/or oppression of people of color based on a socially constructed racial hierarchy that privileges white people. Racism occurs at the internal, interpersonal, institutional and structural levels, resulting in systemic racism.



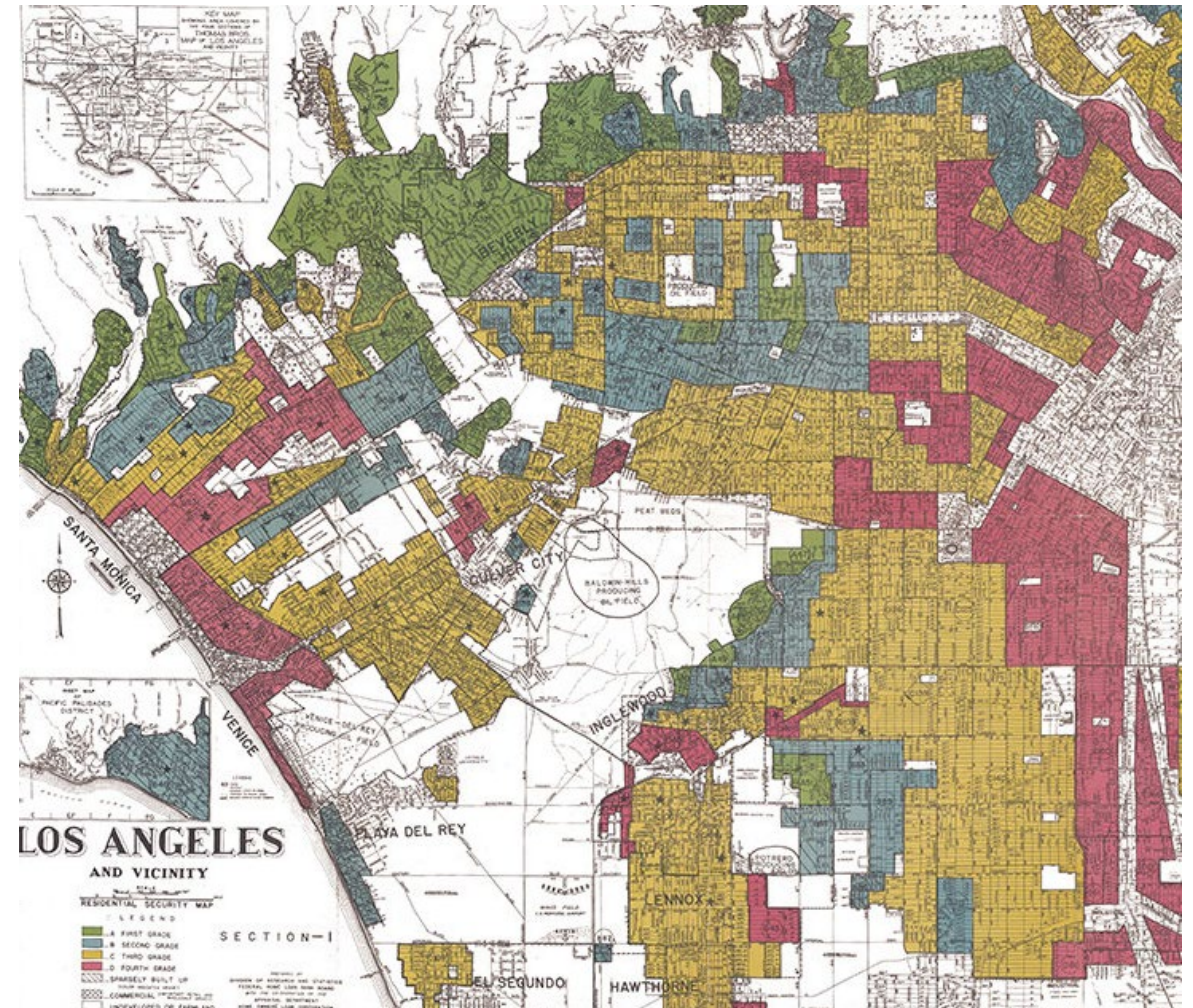
# Context for Race, Space & Place

## National

- › Colonial Planning, Jim Crow, Federal Highway Act, Urban Renewal, Slum Clearance, Eminent Domain, GI Bill
- › Highly unequal communities, programs and resources centered on anti-discrimination and harm mitigation.

## Local

- › Residential segregation laws and covenants, redlining, and blockbusting.
- › Segregated communities of color concentrated in areas with less mobility and upward economic mobility access and options
- › Higher pollution rates, poor public health outcomes, higher crash injury and fatalities, higher enforcement rates





# Context for Race, Space & Place

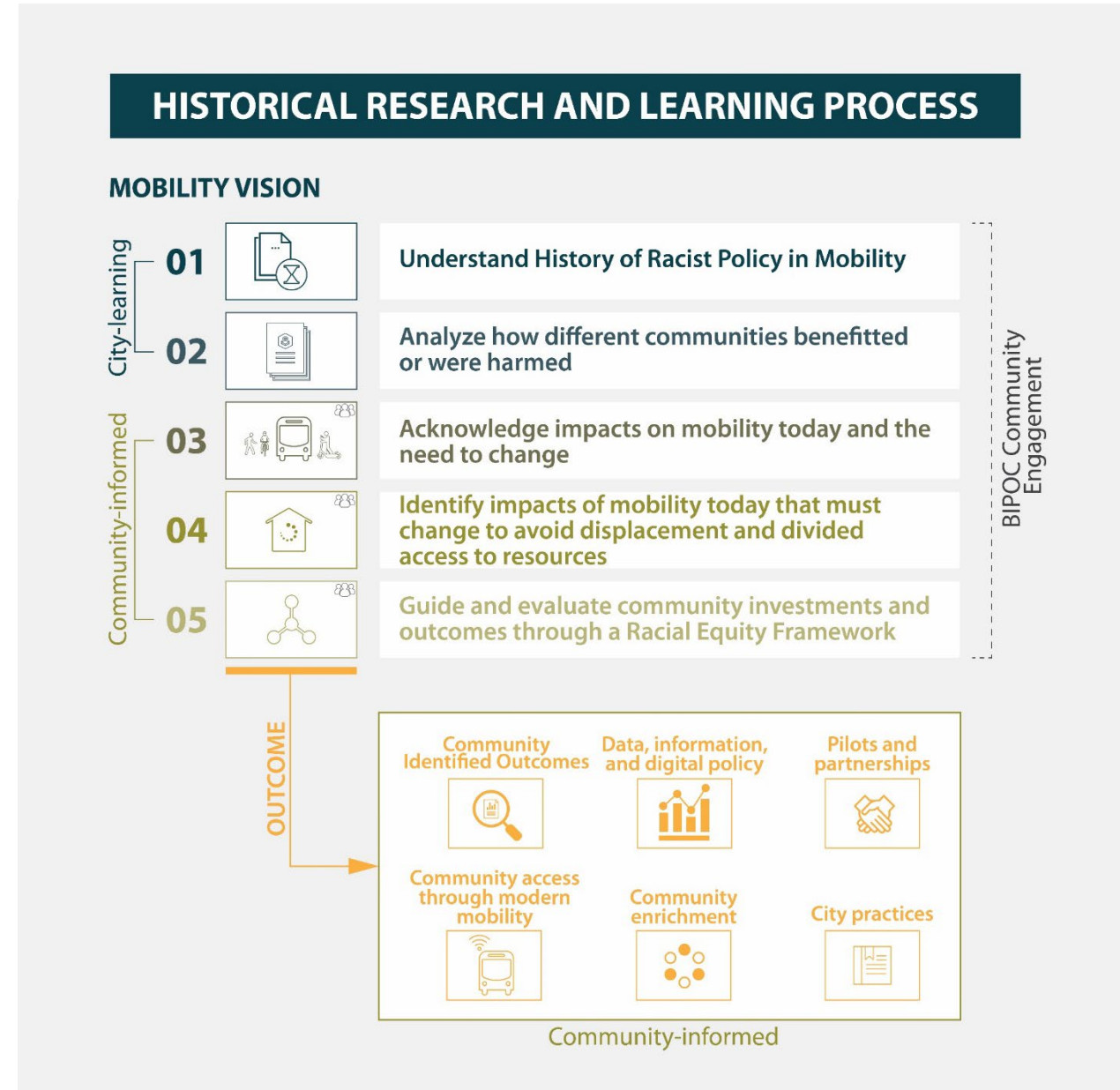
## Racial Equity

Ensuring everyone has what they need to be successful and thrive by taking race and the impacts of racism into account and systemically removing barriers.

# Racial Equity Approach

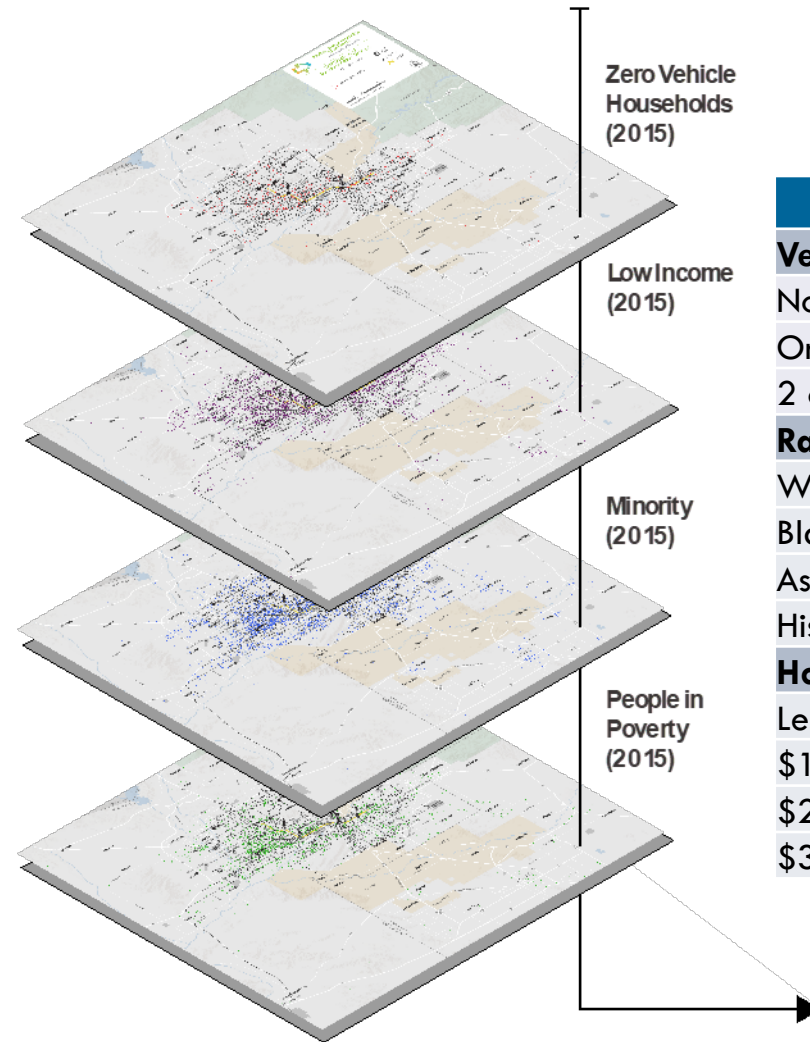
# Racial Equity Approach

- Set Desired Equity Vision for Mobility
- Analyze Historical and Current conditions
- Engage Impacted Communities
- Develop Equity Strategies & Scenarios
- Implement & Benchmark Progress
- Establish a Transparent Feedback Loop



# Racial Equity Data Analytics Approach

- Our data analytics approach centers the **people who most rely on alternative mobility**
- The “**transit propensity index**” serves as the foundation



Demographic Group	TIF
<b>Vehicle Ownership</b>	
No Car	13.19
One	1.02
2 or More	0.36
<b>Race</b>	
White Alone	0.47
Black or African American	2.11
Asian	1.19
Hispanic	1.18
<b>Household Income</b>	
Less than \$15,000	2.12
\$15,000 to \$24,999	1.88
\$25,000 to \$34,999	0.78
\$35,000 Plus	0.39

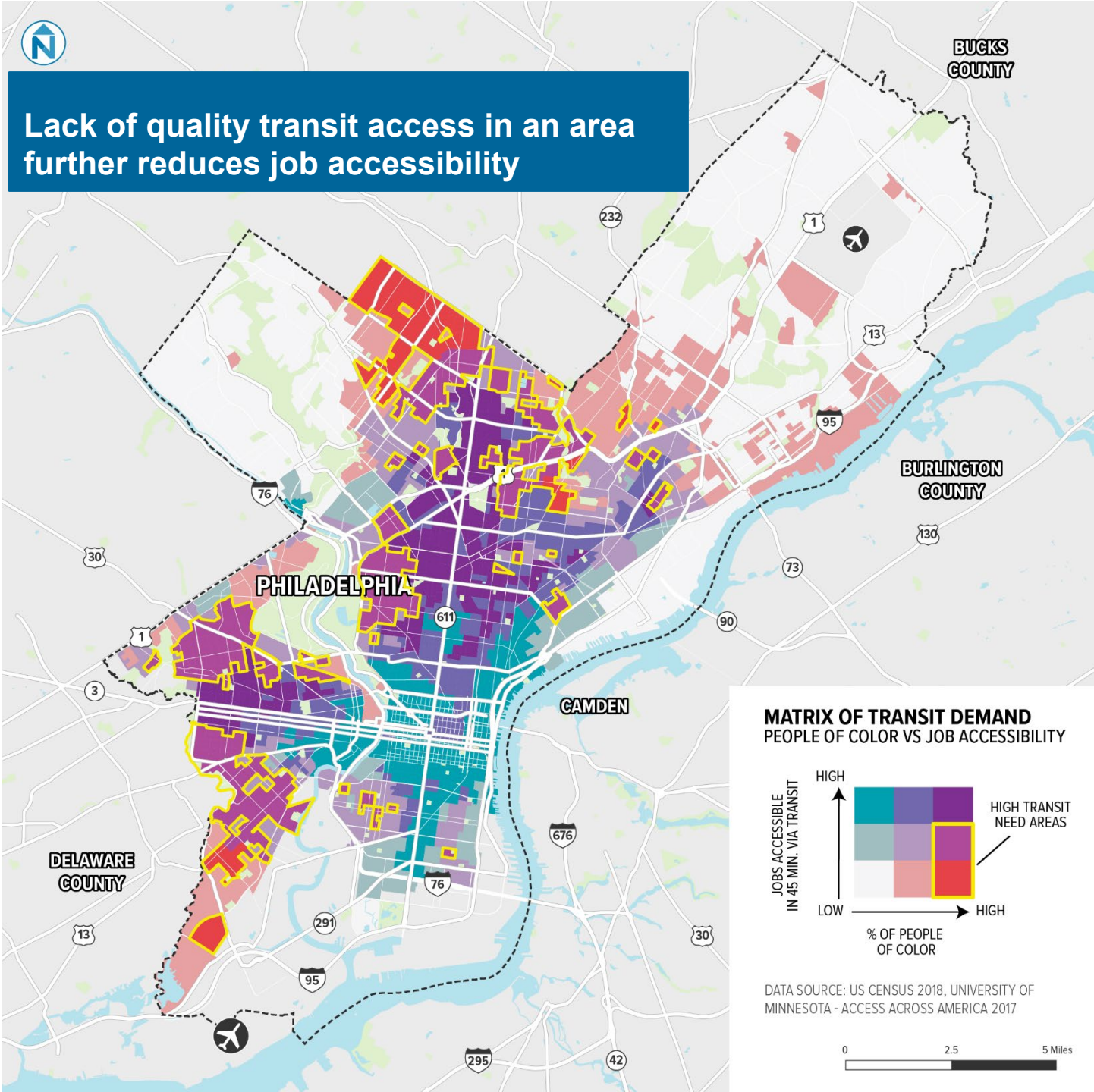
# Racial Equity Analysis Approach

**Transit Deserts** are those areas:

- not covered by transit or
- with a transit coverage that doesn't meet the transit needs

**Variables** used to determine Transit Deserts are:

- Demographics
- Employment
- Transit coverage



# Thank you!



Naomi Doerner

Director of Equity, Diversity & Inclusion

e: [ndoerner@nelsonnygaard.com](mailto:ndoerner@nelsonnygaard.com)



# Repave Oakland

Oakland's 2019 3-Year Paving Plan

Oakland Department of Transportation

Josie Ahrens, Transportation Planner II  
she/her/hers

# 2019 3-Year Paving Plan

3

Demonstrate quick action with a **3-year citywide paving plan.**

100

Deliver **\$100M in paving construction**, tripling average annual spending.

75

**Prioritize \$75M on local streets** to improve neighborhood quality of life.



# Quick Definitions

## Pavement Condition Index (PCI)

A grade that describes the condition of a street on a scale of 0 to 100. Anything between 0-50 is a street in poor condition. 100 is a new street.

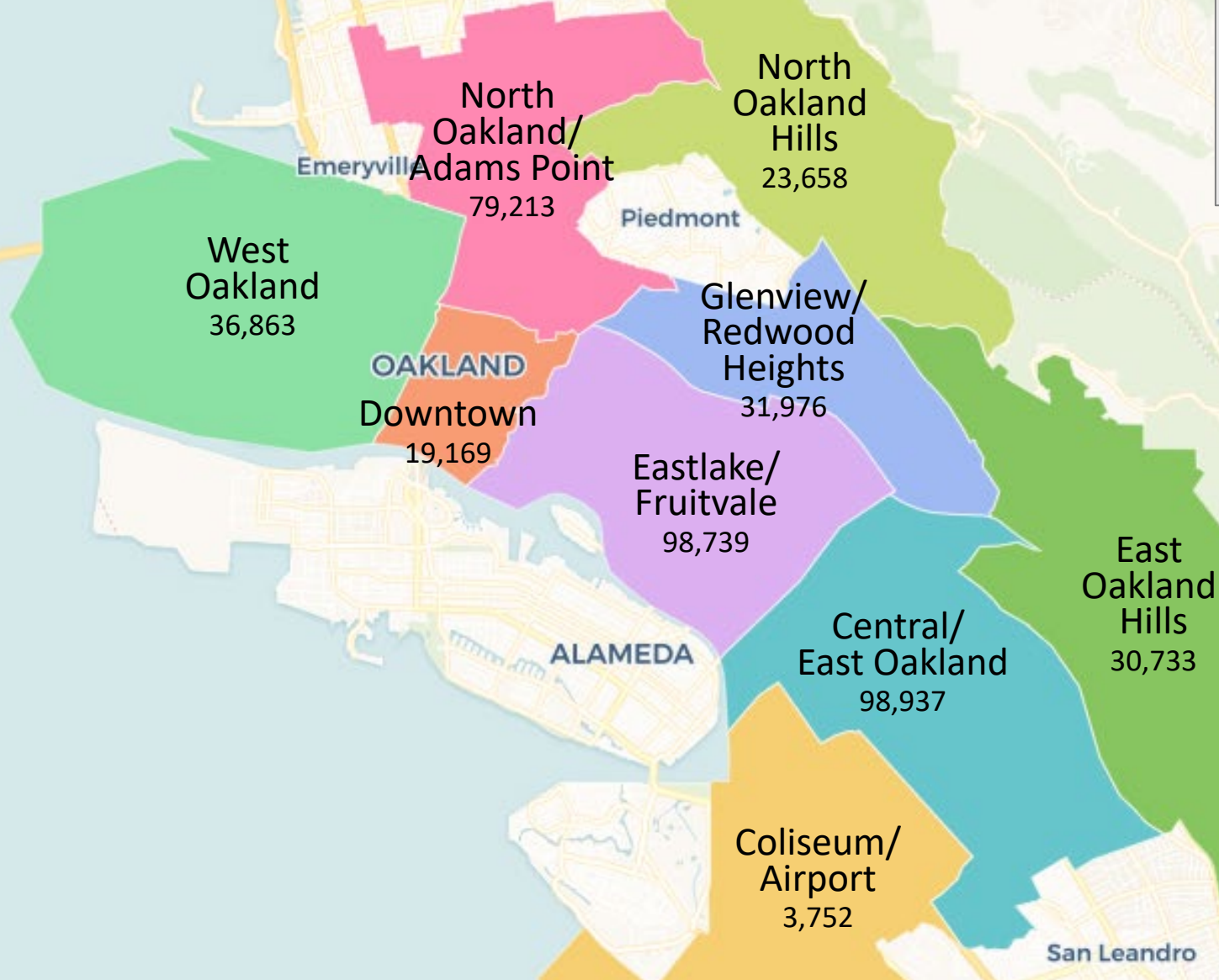
## Underserved Populations

Populations that have experienced historic or current disparities. This definition includes **people of color, low-income households, people with disabilities, households with severe rent burden, people with limited English proficiency, and youth/seniors.**

## Equity

**Equity is a goal.** It means that identity has no detrimental effect on opportunities and outcomes for our City's residents. **To achieve equity, we prioritize the needs of underserved populations.**

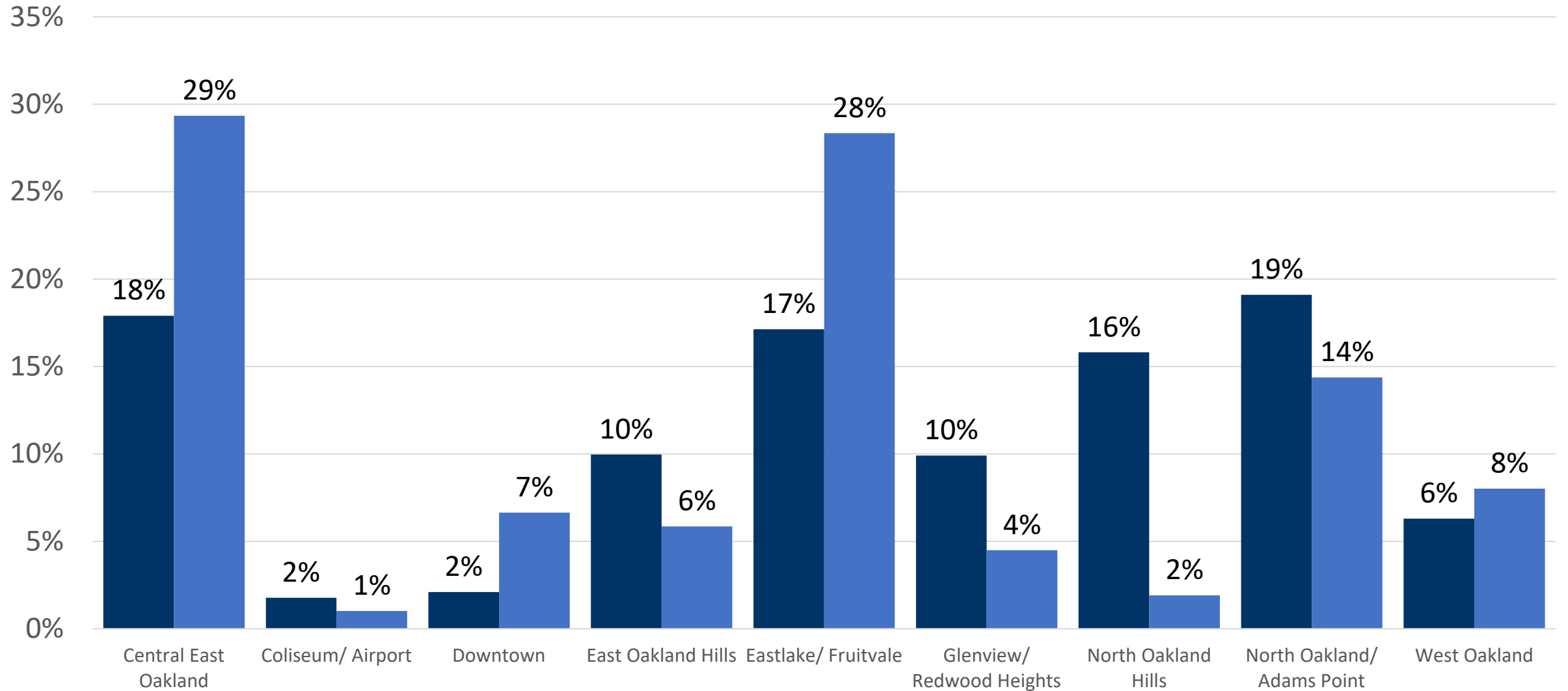
# Planning Areas



- Larger than neighborhoods
- Smaller than Council Districts
- Simple way of looking at distributing paving resources

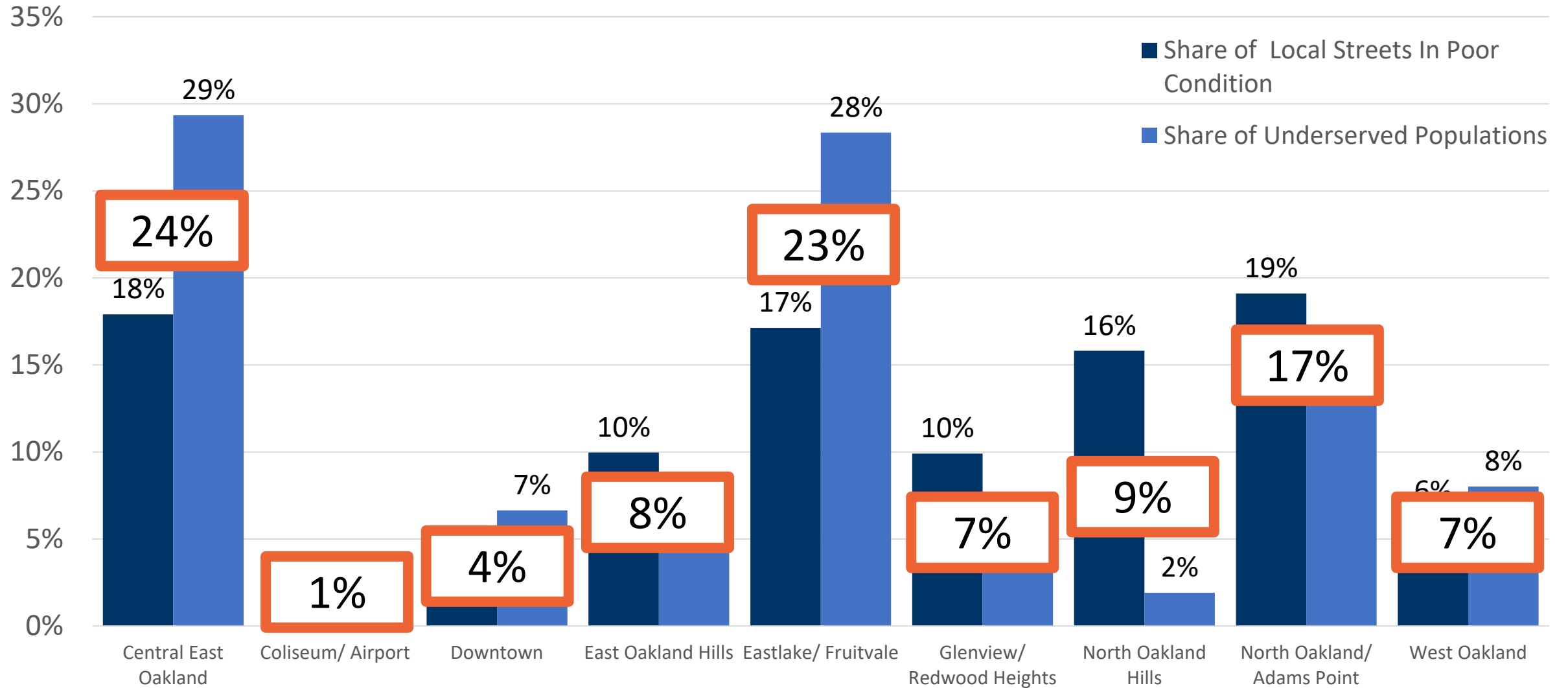
# Street Condition & Equity

- Share of Local Streets In Poor Condition
- Share of Underserved Populations



# Funding By Planning Area

Distribute funding for local streets by the share of underserved populations and share of local street miles in poor condition



# Local Streets Prioritization

## Local Streets

75M

Program funds in nine planning areas by **equity** and **street condition**.

Prioritize individual streets by **street condition** and **school proximity**.

PCI Goal

46



50

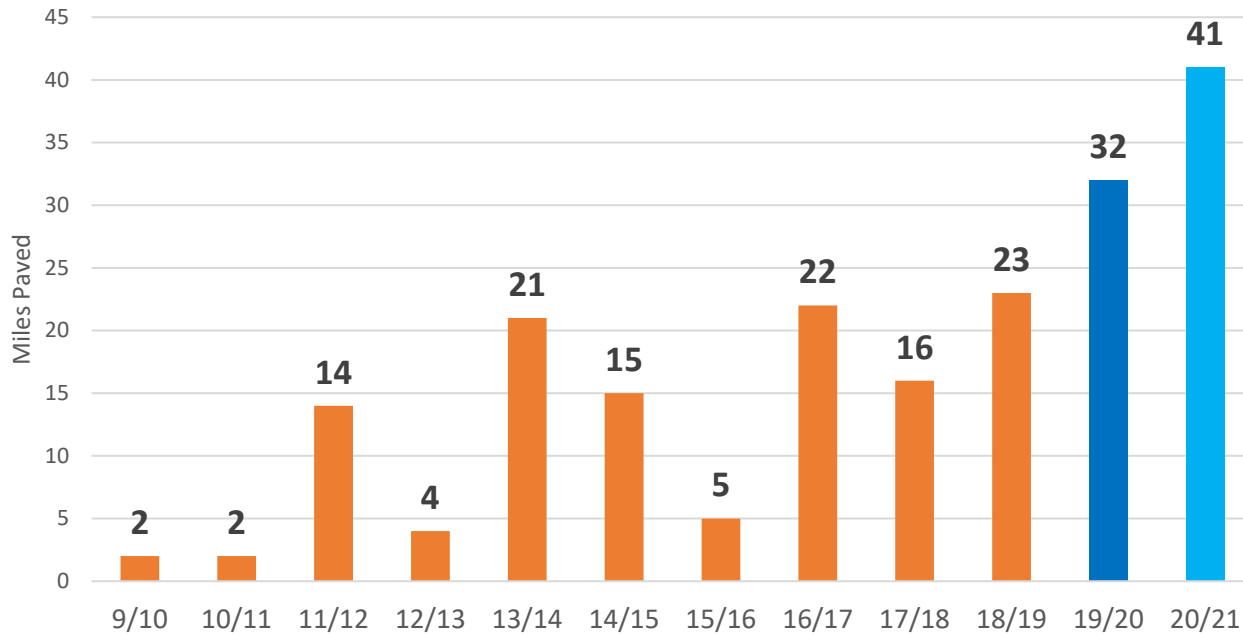
## How We Prioritized Local Streets within Planning Areas:

1. Select streets in poor condition near schools, then
2. Select streets in poor condition in order of worst PCI until dollar target is met.

# Implementation

To date, we've paved 22 miles the Central East Oakland planning area.

Miles Paved Citywide by Fiscal Year



# Year 1

## Complete Streets Metrics:

- 718 new curb ramps
- 824 crosswalk improvements
- 29,000 square feet of sidewalk repairs
- 8 miles of new bikeways
- 4.8 miles of paving around schools



# Year 2



Photo by Robert Prinz



Photo by Robert Prinz



A group of construction workers in high-visibility orange and yellow safety gear are working on a street paving project. They are using tools like shovels and a tamper to compact the asphalt. In the background, there are residential buildings and a white utility vehicle. The scene is set outdoors on a clear day.

# Thank you!

Complete Streets Paving & Sidewalks  
Oakland Department of Transportation

# SAFE STREETS FOR ALL

Lauren Ballard  
Los Angeles Department of  
Transportation

# Vision Zero Los Angeles

- Goal to end traffic fatalities in Los Angeles
- Established via Mayor Garcetti Executive Directive
- Focuses investments on areas with the greatest need



## Disproportionate Traffic Safety Outcomes

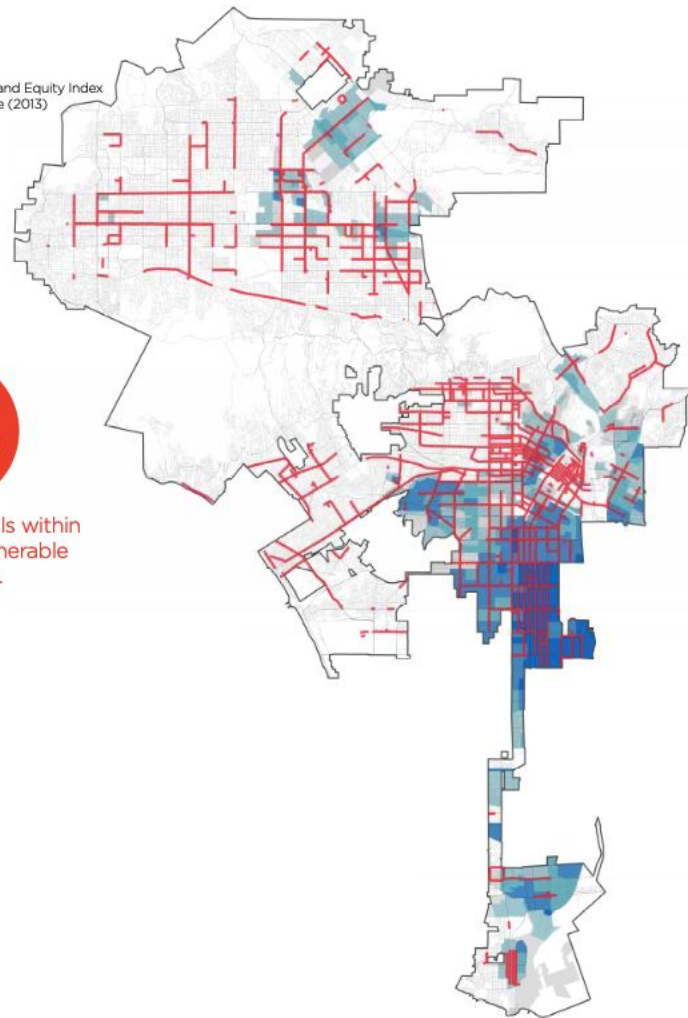
- High-Injury Network (HIN) is made up of 6% or 500 miles of City of LA's total street network (7,500 miles)
- HIN accounts for nearly two-thirds of death and severe injury crashes (KSI) involving people walking and biking
- **49% of HIN falls within top quintile (top 20%) most vulnerable communities**

Community Health and Equity Index  
Areas in Top Quintile (2013)



49%

of the HIN falls within  
our most vulnerable  
communities.



# Equity Indicators in Prioritization

## Vision Zero Priority Corridors

### 2017 Priority Corridors

- Methodology
  - Top Quintile of Health and Equity Index
  - Senior or Child Involved
  - Fatal or Severe
- 40 Corridors Adopted

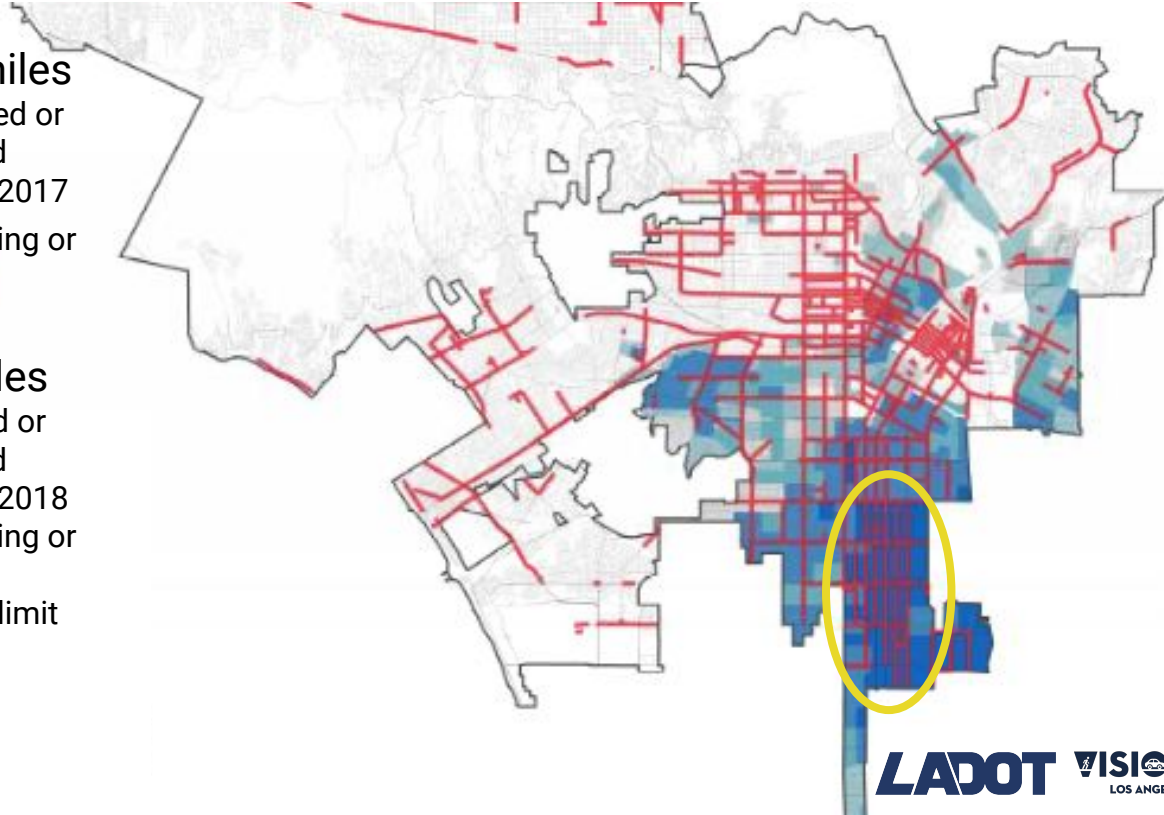
### 2019, 2021 - 30 More Priority Corridors

- Methodology
  - Death and Severe Injury Crashes per mile
- Prioritize Top Quintile Projects
- 23 Adopted in 2019
- 8 Adopted in 2021



# Priority Corridor Safety Projects in South Los Angeles

- **Avalon BI - 6.2 miles**
  - 149 people killed or severely injured between 2009-2017
  - 44% were walking or riding a bike
- **Broadway - 2 miles**
  - 34 people killed or severely injured between 2009-2018
  - 59% were walking or riding a bike
  - 40 mph speed limit



# Priority Corridor Project: Avalon Blvd in South LA

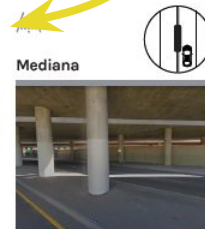


Pre-Project



Quick-Build Project (2020)

Future Project: Complete Streets Project Scheduled to Break Ground 2022



# Priority Corridor Project: Broadway in South Los Angeles



Pre-Project



Future Project: Scheduled to Break Ground 2024



Quick-Build Project (2020)



# Pre-Project Engagement on Avalon



Bike Day on Avalon



Canvassing



Corridor Activation



Friday Night Bike Lights

# Pre-Project Engagement on Broadway



*Community Action Comm. Mtg.*



*Walk Audit*



*Community Action Comm. Mtg.*



*Elementary School Presentation*



*January 2018 MLK Day Pop-Up*



*First 5 LA Workshop*



*Walk Audit*



*Vision Zero Town Hall*

# Adams Blvd Engagement: Walk the Boulevard

## ADAMS BLVD SAFETY PROJECT Walk the Boulevard

Saturday, June 26, 9am-12pm

Visit booths to learn about safety improvements coming to Adams between Fairfax and Crenshaw

MASKS & SOCIAL DISTANCING ARE REQUIRED TO PARTICIPATE

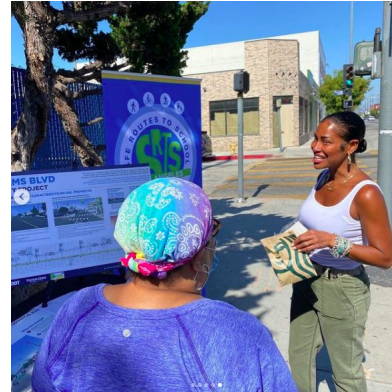
[ladot.lacity.org/adams](http://ladot.lacity.org/adams)

[visionzero@lacity.org](mailto:visionzero@lacity.org)



**LADOT**

**MARK  
RIDLEY-THOMAS**  
LOS ANGELES CITY COUNCIL MEMBER | DISTRICT 10



# Current and Upcoming Projects



Adams Blvd Vision Zero Project  
*Begins August 2021*



Reseda Blvd Vision Zero/Complete Streets Project  
*Under Construction*

# Thank you!

Lauren Ballard  
Los Angeles Department of Transportation  
[lauren.ballard@lacity.org](mailto:lauren.ballard@lacity.org)

[www.ladotlivablestreets.org](http://www.ladotlivablestreets.org)

# Breakout Session



## ○ Learning Objectives

- Learn ways to think about and implement the intersections of equity and the built environment at a practical level.

## ○ Session Purpose

- How can you apply this information to your community?

# Breakout Session Questions



- What did you hear today that made you think incorporating equity into the built environment could work in your region or how it could be improved?
- What are some of the obstacles in embedding equity into the build environment? Have you seen these in your jurisdictions?

*SCAG's Go Human Traffic Safety Peer Exchanges Evaluation Survey:*

<https://bit.ly/SCAGExchangeSurvey>

Sign up for another!

<https://scag.ca.gov/traffic-safety-peer-exchange-events>

We will be posting recordings here:

<https://scag.ca.gov/go-human-safety-resources>



# Upcoming Events



Date	Time	Topic
7/13	1 p.m.	Human - Centric Safety in Rural Communities (Riverside, San Bernardino, and Imperial Counties )
7/15	11 a.m.	Traffic Safety in the City: Centering Equity and Access (Orange, Riverside, and San Bernardino Counties)
7/20	1 p.m.	Traffic Safety in Suburbia: Serving All Ages (Ventura and Los Angeles Counties)
7/23	1:15 p.m.	Reimagining Community Safety
7/29	1 p.m.	Traffic Safety in Suburbia: Serving All Ages (Orange, Riverside, and San Bernardino Counties)

# Contact the Project Team

## SCAG

Courtney Aguirre

aguirre@scag.ca.gov

## Cambridge Systematics

Jon Overman

joverman@camsys.com

## For more information

<https://scag.ca.gov/go-human>

[www.scag.ca.gov](http://www.scag.ca.gov)

